

Finance and Resources Committee, 10 September 2013

Registration Numbers Forecast 2013–18

Executive summary and recommendations

Introduction

The following paper dated 30 August 2013 is an update of the **Registration Numbers Forecast**.

The forecast was last presented to the Finance and Resources Committee on 18 June 2013. Four significant changes have been made to the forecast model. They are as follows:

- i. The 30 August 2013 forecast now incorporates revised registrant numbers for new professions based on further discussions with stakeholders.
- ii. The recommendations arising from the work of Mazars as detailed in the preceding paper at today's Finance and Resources Committee have been incorporated in the model.
- iii. A number of new Appendices have been included in the back of the document with the intention of providing more detailed information on the timing of actual events during the HCPC two year renew cycle which may not necessarily be familiar to all readers of the document.
- iv. Lastly, information on applications received for the register of visiting European Healthcare Professionals have been included in the main body of the document.

Decision

The Finance and Resources Committee is requested to:

- i. Review the forecast and advise the Executive of any changes that should be made to either the structure of the model or the assumptions used in the forecast.
- ii. Subject to any changes that the Finance and Resources Committee require to be made agree that the forecast should be used to by the Executive for the future management and planning of the HCPC.

Background information

The proposed increase in income as a result of a proposed increase in fees was discussed in Council meeting on 4 July 2013 and the Finance and Resources Committee on 18 July 2013.

Resource implications

The Director of Operations, Head of Financial Accounting and the Head of Business Process Improvement have updated the forecasting documents.

Financial implications

The Mazars engagement cost approximately £12,000.

Appendices

Registration Numbers Forecast 2013-18 document.

Date of paper

30 August 2013.

Registration Numbers Forecast

Roy Dunn, Head of Business Process Improvement
Internal working document

30 August 2013



hcpc health & care
professions
council

Contents

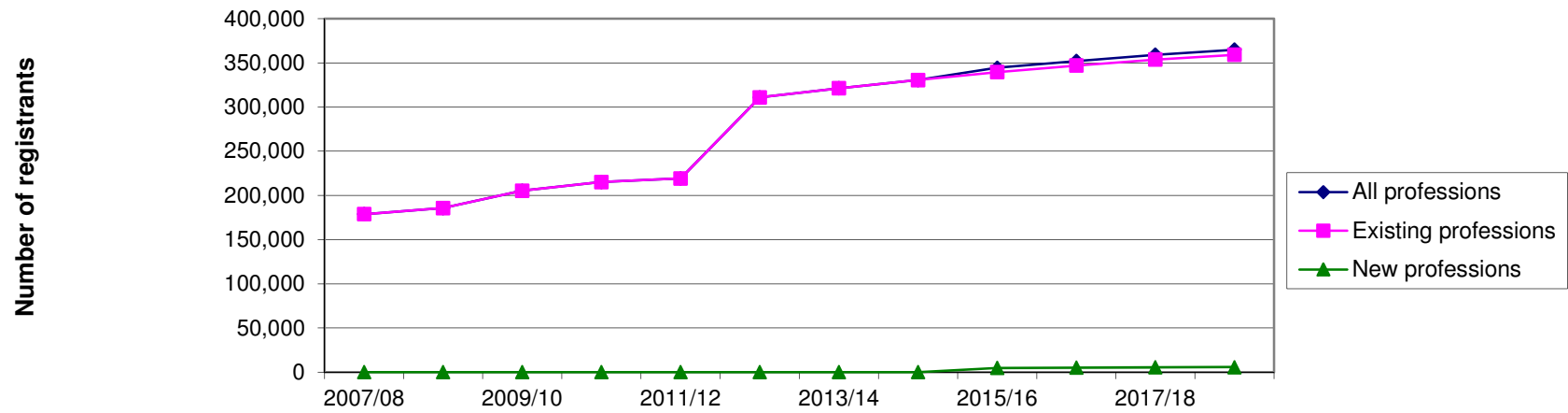
Key assumptions	3
Number of registrants	4
New professions - transfer of voluntary register	6
New registrations - UK route	8
New applications - International route	10
New registrations - International route	12
New applications - Grandparenting route	14
New registrations - Grandparenting route	16
Removed	18
Readmissions	20
Removed registrants less readmissions	22
Applications received for the register of visiting European Health Professionals	24
Appendices	
Appendix 1 List of acronyms	27
Appendix 2 UK route application & registration monthly phasing	28 - 31
Appendix 3 International route application phasing (scrutiny fees)	32 - 35
Appendix 4 International route registration phasing	36 - 39
Appendix 5 Grandparenting model phasing based on two year windows	40
Appendix 6 Profession renewal periods	41
Appendix 7 2 year registration cycle by profession	42

Key assumptions

- Following a government announcement in early 2012, it is anticipated that PHS will be on the HCPC register by April 2015
 - HMTCM voluntary register will be added to the model with transfer on to the HCPC register in October 2015
 - Care workers are not included in this forecast as no decision has been made by government as to whether they will be regulated in England or on the type of regulation to be employed
- Notation: '0' indicates no records where route is viable. '-' indicates route is not viable
- Pale blue highlight indicates manual data input, for new or changing professions

Number of registrants

	Actual 2007/08	Actual 2008/09	Actual 2009/10	Actual 2010/11	Actual 2011/12	Actual 2012/13	Year 0 Reforecast 2013/14	Year 1 Forecast 2014/15	Year 2 Forecast 2015/16	Year 3 Forecast 2016/17	Year 4 Forecast 2017/18	Year 5 Forecast 2018/19
Existing professions												
AS	2,509	2,576	2,785	2,899	3,121	3,185	3,392	3,501	3,675	3,744	3,895	3,938
BS	21,560	22,381	21,894	22,627	21,886	22,402	22,638	23,109	23,247	23,637	23,692	24,010
CH	13,055	12,581	12,897	12,734	13,005	12,754	12,933	12,934	13,082	13,052	13,173	13,117
CS	4,183	4,405	4,444	4,621	4,665	4,847	4,952	5,106	5,184	5,314	5,367	5,477
DT	6,663	6,700	7,160	7,322	7,782	7,890	8,270	8,517	8,841	9,029	9,304	9,440
HAD	-	-	-	1,587	1,722	1,806	1,987	2,132	2,291	2,413	2,554	2,654
OT	28,107	30,122	30,351	32,126	31,946	33,717	34,621	35,851	36,537	37,587	38,083	38,976
ODP	9,458	9,587	10,085	10,313	10,929	11,246	11,721	12,019	12,437	12,671	13,035	13,211
OR	1,239	1,278	1,260	1,303	1,286	1,329	1,349	1,384	1,398	1,428	1,437	1,463
PA	13,703	15,019	15,766	16,782	17,913	19,373	20,347	21,492	22,296	23,304	23,955	24,840
PH	42,490	42,676	44,651	45,002	46,516	46,842	48,555	49,510	50,939	51,601	52,786	53,199
PO	832	877	869	901	893	936	962	998	1,018	1,049	1,064	1,090
PYL	-	-	15,583	17,165	17,845	19,341	19,986	20,814	21,324	22,041	22,430	23,049
RA	23,541	25,318	25,195	26,615	26,480	27,820	28,520	29,490	30,012	30,834	31,203	31,897
SL	11,375	12,169	12,371	13,086	13,173	14,033	14,534	15,162	15,552	16,090	16,384	16,843
SW	-	-	-	-	-	83,421	86,577	88,605	91,670	93,134	95,350	96,008
Total	178,715	185,689	205,311	215,083	219,162	310,942	321,347	330,623	339,504	346,927	353,713	359,209
HMTCM	-	-	-	-	-	-	-	-	4,345	4,672	4,875	5,092
PHS	-	-	-	-	-	-	-	-	540	555	553	558
Total New									4,885	5,227	5,429	5,651
Grand total	178,715	185,689	205,311	215,083	219,162	310,942	321,347	330,623	344,389	352,154	359,141	364,859

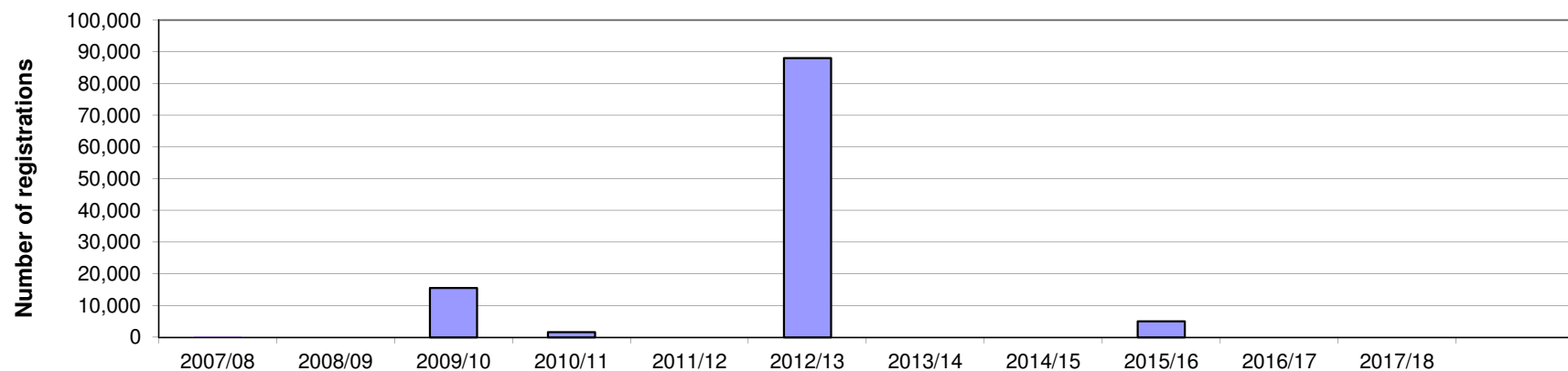


Key assumptions:

- All figures on 31st March, Financial Year End for HCPC.
- These figures are calculated from;
 - Number of registrants
 - New registrations - UK route
 - New professions - transfer of voluntary register
 - New registrations - International route
 - New registrations - Grandparenting route
 - Removed registrations
 - Readmitted registration

New professions - transfer of voluntary or existing register

	Actual 2007/08	Actual 2008/09	Actual 2009/10	Actual 2010/11	Actual 2011/12	Actual 2012/13	Year 0 Reforecast 2013/14	Year 1 Forecast 2014/15	Year 2 Forecast 2015/16	Year 3 Forecast 2016/17	Year 4 Forecast 2017/18	Year 5 Forecast 2018/19
HAD	-	-	-	1,573	-	-	-	-	-	-	-	-
PYL	-	-	15,552	-	-	-	-	-	-	-	-	-
SW	-	-	-	-	-	88,059	-	-	-	-	-	-
PHS	-	-	-	-	-	-	-	-	570	-	-	-
HMTCM	-	-	-	-	-	-	-	-	4,500	-	-	-
Total	0	0	15,552	1,573	0	88,059	0	0	5,070	0	0	0



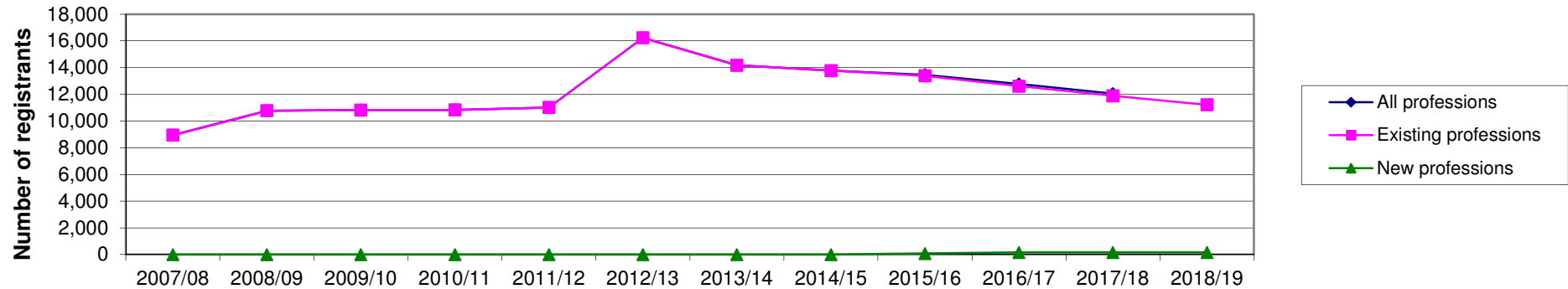
*84,000 Social workers were Reforecasted to be transferred. However, 88,059 records were received from the GSCC.
Of the 88,059 that were transferred, 8425 chose not to renew

Key assumptions

- Public Health Specialists to be regulated by HCPC following government announcement February 2012 to move profession from the UK Public Health Register. Approx 570?
UK Public Health Register transfers 1st April 2015, with renewal 3 months later.
- 4,500 HMTCM practitioners transferring from voluntary registers (estimate) around 1st October 2015, with renewal 3 months later
Actual new prof totals are transferred quantities

New registrations - UK route

	Actual 2007/08	Actual 2008/09	Actual 2009/10	Actual 2010/11	Actual 2011/12	Actual 2012/13	Year 0 Reforecast 2013/14	Year 1 Forecast 2014/15	Year 2 Forecast 2015/16	Year 3 Forecast 2016/17	Year 4 Forecast 2017/18	Year 5 Forecast 2018/19
Existing professions												
AS	169	215	208	248	251	271	233	224	215	206	198	190
BS	677	770	765	800	752	746	642	616	591	568	545	523
CH	403	430	388	406	369	376	323	310	298	286	275	264
CS	167	275	235	228	271	224	193	185	178	170	164	157
DT	364	434	428	442	420	444	382	367	352	338	324	311
HAD	-	-	-	73	151	227	195	187	180	173	166	159
OT	1,557	1,867	1,724	1,660	1,573	1,742	1,498	1,438	1,381	1,325	1,272	1,222
ODP	580	604	498	611	674	715	615	590	567	544	522	501
OR	44	53	45	49	41	61	52	50	48	46	45	43
PA	901	1,505	1,127	1,148	1,529	1,668	1,434	1,377	1,322	1,269	1,218	1,170
PH	2,282	2,446	2,170	1,947	1,803	1,937	1,666	1,599	1,535	1,474	1,415	1,358
PO	34	48	35	36	32	51	44	42	40	39	37	36
PYL	-	-	1,225	1,274	1,224	1,202	1,034	992	953	915	878	843
RA	1,110	1,316	1,221	1,193	1,201	1,343	1,155	1,109	1,064	1,022	981	942
SL	658	807	757	723	725	831	715	686	659	632	607	583
SW	-	-	-	-	-	4,395	4,000	4,000	4,000	3,600	3,240	2,916
Total	8,946	10,770	10,826	10,838	11,016	16,233	14,181	13,773	13,383	12,607	11,887	11,217
HMTCM	-	-	-	-	-	-	-	-	75	150	150	150
PHS	-	-	-	-	-	-	-	-	10	10	10	10
Total New	0	0	0	0	0	0	0	0	85	160	160	160
Grand total	8,946	10,770	10,826	10,838	11,016	16,233	14,181	13,773	13,468	12,767	12,047	11,377



Key assumptions

- UK route registrations based on historic data projected forward.
Additional 10% projected drop (totalling 14%) in Year 0 = 2013/14 based on information received from some institutions.
This is a marginally pessimistic assumption.
- 2010/11 to 2014/15: generic 4% fall p/a (excluding SW profession). May continue medium term.
- Figures for all new professions are estimated based on DH data, unless otherwise specified.
- Social Work students graduating will fall by 10% starting 2016/17 following decrease in numbers of programmes
- PHS, initial research suggests 10 new UK route registrations per year
- HMTCM, initial research suggests we will receive 75 in first year of register (due to reg opening 1st Oct), 150 pa thereafter.

New applications - International route

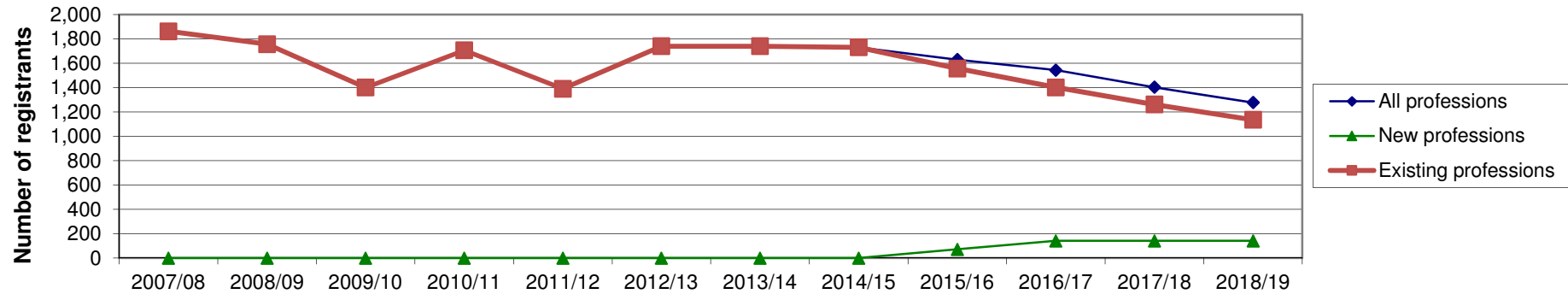
	Actual 2007/08	Actual 2008/09	Actual 2009/10	Actual 2010/11	Actual 2011/12	Actual 2012/13	Year 0 Reforecast 2013/14	Year 1 Forecast 2014/15	Year 2 Forecast 2015/16	Year 3 Forecast 2016/17	Year 4 Forecast 2017/18	Year 5 Forecast 2018/19
AS	7	11	7	15	16	11	14	13	11	10	9	8
BS	223	218	205	220	143	172	157	141	127	114	103	93
CH	34	22	23	19	21	19	19	17	15	14	12	11
CS	33	25	28	38	33	42	42	38	34	31	28	25
DT	89	107	96	112	110	105	105	95	85	77	69	62
HAD	-	-	-	7	6	7	7	6	6	5	5	4
OT	281	330	265	324	258	256	256	230	207	187	168	151
ODP	3	5	5	4	4	11	11	10	9	8	7	6
OR	3	3	1	2	1	3	3	3	2	2	2	2
PA	12	26	28	27	25	34	34	31	28	25	22	20
PH	580	622	528	642	626	671	671	604	544	489	440	396
PO	3	9	0	7	8	7	7	6	6	5	5	4
PYL	-	-	112	191	124	152	152	137	123	111	100	90
RA	347	312	215	320	299	235	235	212	190	171	154	139
SL	128	120	133	137	153	121	121	109	98	88	79	71
SW	-	-	-	-	-	218	210	189	170	153	138	124
Total	1,743	1,810	1,646	2,065	1,827	2,064	2,044	1,840	1,656	1,490	1,341	1,207
HMTCM	-	-	-	-	-	-	-	-	75	150	150	150
PHS	-	-	-	-	-	-	-	-	3	3	3	3
Total New	-	-	-	-	-	-	-	-	78	153	153	153
Grand total	1,743	1,810	1,646	2,065	1,827	2,064	2,044	1,840	1,734	1,643	1,494	1,360

Key assumptions

- Only applications where the scrutiny fee is retained are counted
- Applicants applying in one financial year may be registered in subsequent years
- Some applications will not result in registration
- Some initial assessments will result in POA or Aptitude Tests which may occur much later
- EU Temporary and Occasional applicants are not included here (see page 24)
- SW project 200 applications from Year 1, then decline
- HMTCM start part way through year 2 so only 50% of INTL predicted can apply or register.

New registrations - International route

	Actual 2007/08	Actual 2008/09	Actual 2009/10	Actual 2010/11	Actual 2011/12	Actual 2012/13	Year 0 Reforecast 2013/14	Year 1 Forecast 2014/15	Year 2 Forecast 2015/16	Year 3 Forecast 2016/17	Year 4 Forecast 2017/18	Year 5 Forecast 2018/19
Existing professions												
AS	8	6	4	15	10	14	14	13	11	10	9	8
BS	231	236	170	202	122	154	154	139	125	112	101	91
CH	39	27	14	18	14	15	15	14	12	11	10	9
CS	30	28	22	25	25	34	34	31	28	25	22	20
DT	94	97	84	88	78	97	97	87	79	71	64	57
HAD	-	-	-	5	5	8	8	7	6	6	5	5
OT	302	283	258	289	217	249	249	224	202	182	163	147
ODP	5	2	4	3	3	1	1	1	1	1	1	1
OR	4	3	1	1	2	1	1	1	1	1	1	1
PA	14	22	24	25	20	24	24	22	19	17	16	14
PH	567	608	472	501	464	633	633	570	513	461	415	374
PO	6	3	1	6	7	6	6	5	5	4	4	4
PYL	-	-	37	127	91	95	95	86	77	69	62	56
RA	428	336	200	270	216	241	241	217	195	176	158	142
SL	134	105	110	130	116	137	137	123	111	100	90	81
SW	-	-	-	-	-	30	30	192	173	156	140	126
Total	1,862	1,756	1,401	1,705	1,390	1,739	1,739	1,730	1,557	1,401	1,261	1,135
HMTCM	-	-	-	-	-	-	-	-	70	140	140	140
PHS	-	-	-	-	-	-	-	-	2	2	2	2
Total New	0	0	0	0	0	0	0	0	72	142	142	142
Grand total	1,862	1,756	1,401	1,705	1,390	1,739	1,739	1,730	1,629	1,543	1,403	1,277



Key assumptions

- Reforecast year reset to last financial years "Actuals" each year
- 10% drop per year in new International registrants projected forward from Reforecast year.
- Link between application date and registration date variable between 1 month and 8 months assuming POA/TOC is not required
- Public Health Specialists international route quantities poorly constrained, perhaps 2 per year initially
- Model for Herbal Medicine & Traditional Chinese medicine practitioners, poorly constrained, perhaps 140 per year initially
- HMTCM start part way through year 2 so only 50% of INTL predicted can apply or register.
- SW INTL registrations around 192 in second full year of HCPC registration (Yea

New applications - Grandparenting route

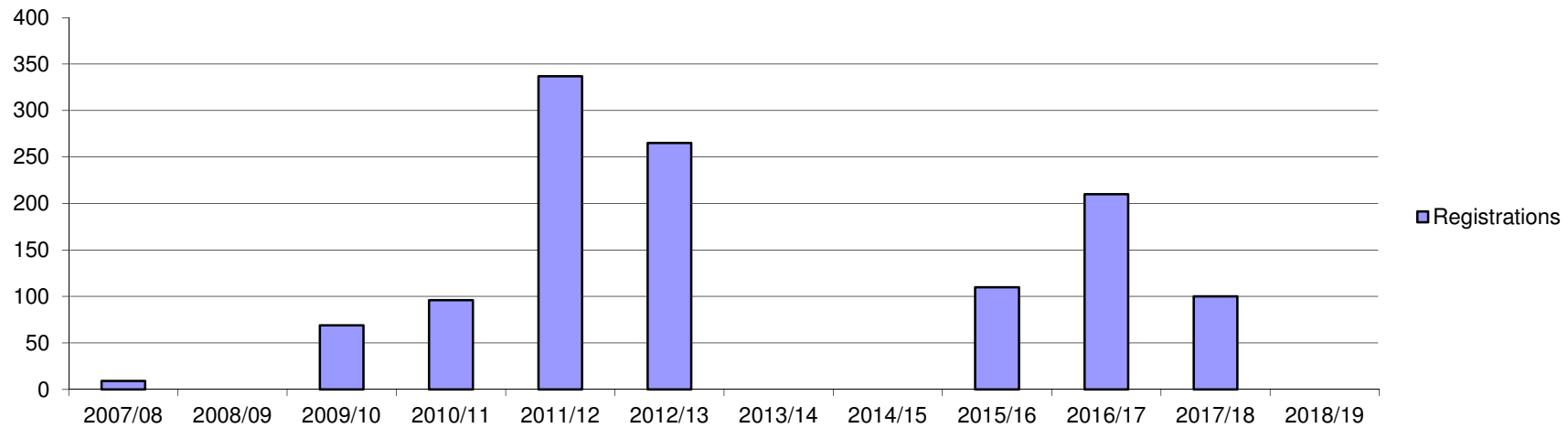
	Actual 2007/08	Actual 2008/09	Actual 2009/10	Actual 2010/11	Actual 2011/12	Actual 2012/13	Year 0 Reforecast 2013/14	Year 1 Forecast 2014/15	Year 2 Forecast 2015/16	Year 3 Forecast 2016/17	Year 4 Forecast 2017/18	Year 5 Forecast 2018/19
Existing professions	AS	-	-	-	-	-	-	-	-	-	-	-
	BS	2	-	-	-	-	-	-	-	-	-	-
	CH	1	-	-	-	-	-	-	-	-	-	-
	CS	2	-	-	-	-	-	-	-	-	-	-
	DT	-	-	-	-	-	-	-	-	-	-	-
	HAD	-	-	-	-	-	-	-	-	-	-	-
	OT	-	-	-	-	-	-	-	-	-	-	-
	ODP	-	-	-	-	-	-	-	-	-	-	-
	OR	-	-	-	-	-	-	-	-	-	-	-
	PA	2	-	-	-	-	-	-	-	-	-	-
	PH	2	-	-	-	-	-	-	-	-	-	-
	PO	-	-	-	-	-	-	-	-	-	-	-
	PYL	-	-	69	96	337	265	-	-	-	-	-
	RA	-	-	-	-	-	-	-	-	-	-	-
	SL	-	-	-	-	-	-	-	-	-	-	-
	SW	-	-	-	-	-	-	-	-	-	-	-
Total	9	0	69	96	337	265	-	0	0	0	0	
HMTCM	-	-	-	-	-	-	-	-	120	220	100	-
PHS	-	-	-	-	-	-	-	-	10	10	-	-
Total New	0	0	0	0	0	0	0	0	130	230	100	0
Grand total	9	0	69	96	337	265	0	0	130	230	100	0

Key assumptions

- Grandparenting route is typically run for a two year period starting with the opening of a new professional register
- Where multiple modalities or divisions occur, a registration resulting from an existing register may have additional modalities or divisions applied via the Grandparenting route
However, the number of registrations does not increase when the applicant successfully applies, but has an additional modality or division listed.
- Predictions of applicants are difficult to delimit
- Phasing of applicants via the grandparenting route are based on previous trends but professional influences may cause large variances from the forecast
- HMTCM grandparenting application route starts on 1 October 2015 and open for 24 months.
- PHS grandparenting application route starts on 1 April 2015 and is open for 24 months.

New registrations - Grandparenting route

	Actual 2007/08	Actual 2008/09	Actual 2009/10	Actual 2010/11	Actual 2011/12	Actual 2012/13	Year 0 Reforecast 2013/14	Year 1 Forecast 2014/15	Year 2 Forecast 2015/16	Year 3 Forecast 2016/17	Year 4 Forecast 2017/18	Year 5 Forecast 2018/19
Existing professions	AS	-	-	-	-	-	-	-	-	-	-	-
	BS	2	-	-	-	-	-	-	-	-	-	-
	CH	1	-	-	-	-	-	-	-	-	-	-
	CS	2	-	-	-	-	-	-	-	-	-	-
	DT	-	-	-	-	-	-	-	-	-	-	-
	HAD	-	-	-	-	-	-	-	-	-	-	-
	OT	-	-	-	-	-	-	-	-	-	-	-
	ODP	-	-	-	-	-	-	-	-	-	-	-
	OR	-	-	-	-	-	-	-	-	-	-	-
	PA	2	-	-	-	-	-	-	-	-	-	-
	PH	2	-	-	-	-	-	-	-	-	-	-
	PO	-	-	-	-	-	-	-	-	-	-	-
	PYL	-	-	69	96	337	265	0	-	-	-	-
	RA	-	-	-	-	-	-	-	-	-	-	-
	SL	-	-	-	-	-	-	-	-	-	-	-
	SW	-	-	-	-	-	-	-	-	-	-	-
Total	9	0	69	96	337	265	0	0	0	0	0	
HMTCM	-	-	-	-	-	-	-	-	100	200	100	0
PHS	-	-	-	-	-	-	-	-	10	10	0	0
Total New	0	0	0	0	0	0	0	0	110	210	100	0
Grand total	9	0	69	96	337	265	0	0	110	210	100	0



Key assumptions

- Regular two year grandparenting period assumed for any grandparenting professions.

Public Health Specialists

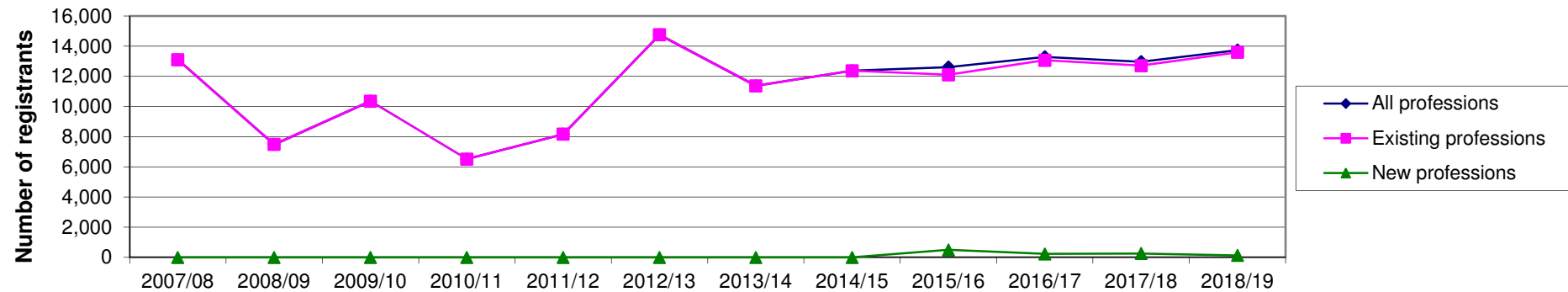
- No reliable data available

HMTCM

- Unknown if grandparenting is required in licensing model
- 200 Herbal Practitioners become registered on the voluntary register per year

Removal

	Actual 2007/08	Actual 2008/09	Actual 2009/10	Actual 2010/11	Actual 2011/12	Actual 2012/13	Year 0 Reforecast 2013/14	Year 1 Forecast 2014/15	Year 2 Forecast 2015/16	Year 3 Forecast 2016/17	Year 4 Forecast 2017/18	Year 5 Forecast 2018/19	
Existing professions	AS	52	325	39	209	73	232	80	170	88	184	94	195
	BS	2,457	577	1,612	404	1,106	472	1,120	566	1,155	581	1,182	592
	CH	153	821	174	800	221	742	319	647	323	654	326	659
	CS	407	98	235	80	166	78	242	124	255	130	266	134
	DT	68	401	92	315	77	370	197	414	213	442	226	465
	HAD	-	-	-	67	33	152	45	99	53	115	60	128
	OT	3,246	744	2,232	431	1,813	485	1,686	866	1,793	913	1,879	952
	ODP	97	553	138	645	224	319	281	586	300	622	317	652
	OR	86	32	87	16	49	22	66	34	69	35	71	36
	PA	1,084	338	572	214	336	256	969	509	1,075	557	1,165	599
	PH	1,158	2,637	958	2,686	1,030	2,415	1,171	2,428	1,238	2,547	1,290	2,639
	PO	112	22	50	14	47	21	47	24	50	25	52	27
	PYL	-	-	1,541	87	1,117	132	967	500	1,041	533	1,102	561
	RA	3,044	642	1,852	339	1,198	445	1,391	713	1,474	750	1,542	780
	SL	1,133	296	771	207	674	186	702	363	758	389	804	410
	SW	-	-	-	-	-	-	8,425	2,086	4,329	2,215	4,584	2,328
Total	13,097	7,486	10,353	6,514	8,164	14,752	11,369	12,370	12,101	13,061	12,705	13,595	
HMTCM	-	-	-	-	-	-	-	-	450	217	234	122	
PHS	-	-	-	-	-	-	-	-	57	14	28	14	
Total New	0	0	0	0	0	0	0	0	507	231	261	136	
Grand total	13,097	7,486	10,353	6,514	8,164	14,752	11,369	12,370	12,608	13,292	12,967	13,731	



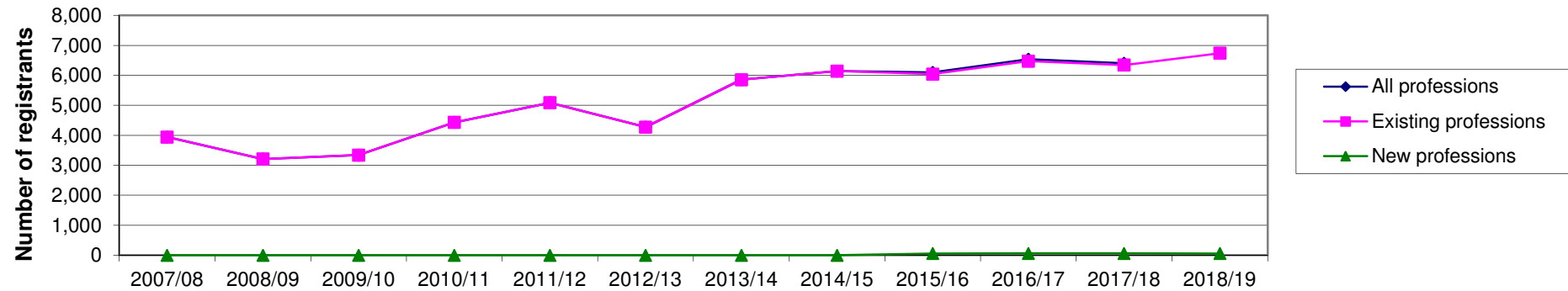
Key assumptions

- Renewal years are highlighted.
- Removal figures include voluntary removal, deceased registrants and struck-off registrants.
- 2.5% of professions removed in years where they are not in renewal; 5% of professions removed in years where they are in renewal.
- For new professions 5% removed in years where they are not in renewal; 10% of new professions removed in years where they are in renewal.
- End of cycle removal include 1% to account for retiring registrants and CPD audit triggered removals.
- HMCTM - assume initial 10% removal due to no history of statutory requirement for registration, 5%;5%;2.5% future years
- PYL profession follows usual removal pattern after 3rd year of registration with HCPC
- SocWok profession follows usual removal pattern after 3rd year of registration with HCPC
- PHS - no hard data at present, assumption is 10% first removal, PHS removals as 2.5%, 5% & 2.5% in Yr 3, Yr 4 & Yr 5.
- Figure in highlight reflects the end of registration period removal
- No highlight = intermediate and other removals outside the end of cycle Removal process

Readmissions

	Actual 2007/08	Actual 2008/09	Actual 2009/10	Actual 2010/11	Actual 2011/12	Actual 2012/13	Year 0 Reforecast 2013/14	Year 1 Forecast 2014/15	Year 2 Forecast 2015/16	Year 3 Forecast 2016/17	Year 4 Forecast 2017/18	Year 5 Forecast 2018/19	
Existing professions	AS	58	70	22	193	40	96	40	42	35	37	37	39
	BS	585	231	434	45	728	189	560	283	578	291	591	296
	CH	148	379	96	791	159	430	159	323	162	327	163	329
	CS	126	39	85	3	158	43	121	62	128	65	133	67
	DT	97	185	50	42	99	57	99	207	106	221	113	233
	HAD	-	-	-	4	20	52	23	50	27	57	30	64
	OT	696	298	597	73	1,096	83	843	433	896	457	940	476
	ODP	156	255	77	593	141	274	141	293	150	311	158	326
	OR	48	13	25	1	43	1	33	17	35	17	36	18
	PA	608	135	296	58	123	5	484	254	537	279	583	299
	PH	585	1,217	339	2,514	586	1,801	586	1,214	619	1,273	645	1,320
	PO	48	9	17	1	30	11	23	12	25	13	26	13
	PYL	-	-	560	44	501	10	484	250	520	267	551	280
	RA	568	257	501	57	904	121	696	357	737	375	771	390
	SL	219	119	241	12	456	21	351	182	379	194	402	205
	SW	-	-	-	-	-	1,080	1,212	2,164	1,108	2,292	1,164	2,384
	Total	3,942	3,207	3,339	4,431	5,084	4,274	5,853	6,142	6,042	6,475	6,343	6,739
HMTCM	-	-	-	-	-	-	-	-	50	54	47	49	
PHS	-	-	-	-	-	-	-	-	5	7	14	7	
Total	0	0	0	0	0	0	0	0	55	61	61	56	
Grand total	3,942	3,207	3,339	4,431	5,084	4,274	5,853	6,142	6,097	6,536	6,404	6,795	

Highlighted figures reflect readmissions within 6 months of removal
 1.25% of active registrants readmit after lapsing
 2.5% of active registrants readmit after removal in the renewal cycle.



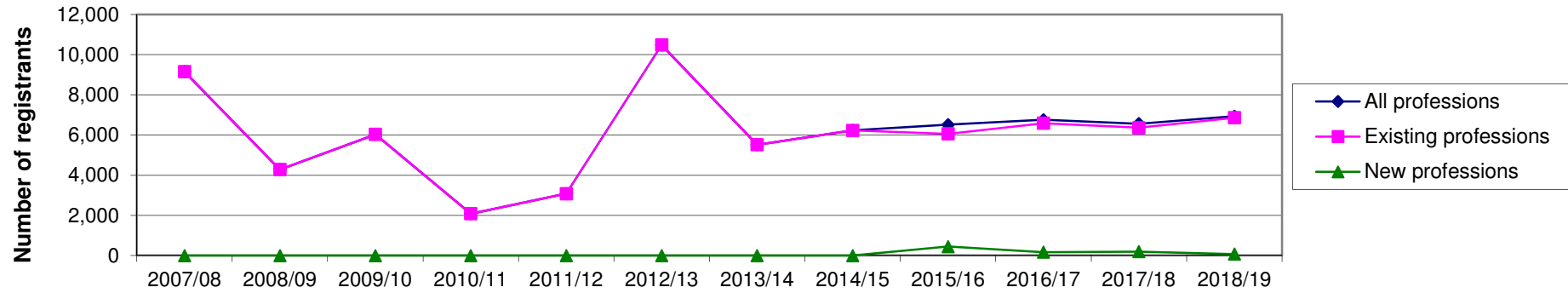
Key assumptions

- Renewal years are shown highlighted
- 1.25% of professions readmit in years where they are not in renewal; 2.5% of professions readmit in years where they are in renewal. This is based on previous data that indicates that 50% of those removed do not readmit. Current profns only
- Estimate used for first year for new professions and then calculated using formula above.
- Between 5 and 20% of removed registrants readmit within 30 days of end of cycle removals, and do not pay a readmission fee
- HMTCM not previously regulated so removal and readmission numbers do not follow model of other HCPC professions initially
- This model does not include those Returning to Practice
- For very small professions, rounding issues are impact %age calculations to make arithmetic errors apparent
- Slight percentage adjustments to ensure calculations balance

Removed registrants less readmissions

	Actual 2007/08	Actual 2008/09	Actual 2009/10	Actual 2010/11	Actual 2011/12	Actual 2012/13	Year 0 Reforecast 2013/14	Year 1 Forecast 2014/15	Year 2 Forecast 2015/16	Year 3 Forecast 2016/17	Year 4 Forecast 2017/18	Year 5 Forecast 2018/19	
Existing professions	AS	-6	255	17	16	33	136	40	127	53	147	56	156
	BS	1,872	346	1,178	359	378	283	560	283	578	291	591	296
	CH	5	442	78	9	62	312	159	323	162	327	163	329
	CS	281	59	150	77	8	35	121	62	128	65	133	67
	DT	-29	216	42	273	-22	313	99	207	106	221	113	233
	HAD	-	-	-	63	13	100	23	50	27	57	30	64
	OT	2,550	446	1,635	358	717	402	843	433	896	457	940	476
	ODP	-59	298	61	52	83	45	141	293	150	311	158	326
	OR	38	19	62	15	6	21	33	17	35	17	36	18
	PA	476	203	276	156	213	251	484	254	537	279	583	299
	PH	573	1,420	619	172	444	614	586	1,214	619	1,273	645	1,320
	PO	64	13	33	13	17	10	23	12	25	13	26	13
	PYL	-			43	616	122	484	250	520	267	551	280
	RA	2,476	385	1,351	282	294	324	696	357	737	375	771	390
	SL	914	177	530	195	218	165	351	182	379	194	402	205
	SW						7,345	874	2,164	1,108	2,292	1,164	2,384
Total	9,155	4,279	6,033	2,083	3,080	10,478	5,515	6,227	6,059	6,586	6,362	6,856	
HMTCM							-		400	163	187	73	
PHS	-	-	-	-	-	-	-	-	52	7	14	7	
Total	0	0	0	0	0	0	0	0	452	170	201	80	
Grand total	9,155	4,279	6,033	2,083	3,080	10,478	5,515	6,227	6,511	6,755	6,563	6,936	

Negative values represent multiple removal and readmission for individuals, or readmissions from earlier removal cycles



Key assumptions

- Deceased registrants, those retiring, emigrating and others permanently leaving the register (voluntary deregistration).

Applications received for the register of visiting European Health Professionals

	Actual 2007/08	Actual 2008/09	Actual 2009/10	Actual 2010/11	Actual 2011/12	Actual 2012/13	Year 0 Reforecast 2013/14	Year 1 Forecast 2014/15	Year 2 Forecast 2015/16	Year 3 Forecast 2016/17	Year 4 Forecast 2017/18	Year 5 Forecast 2018/19
AS				x	x	2						
BS				x	x	59						
CH				x	x	9						
CS				x	x	7						
DT				x	x	34						
HAD				x	x	2						
OT				x	x	40						
ODP				x	x	3						
OR				x	x	5						
PA				x	x	7						
PH				x	x	221						
PO				x	x	2						
PYL				x	x	31						
RA				x	x	141						
SL				x	x	29						
SW				x	x	22						
Total						614						
HMTCM						-						
PHS						-						
Total						-						
Grand total												

Key assun

- Number of applications recorded not temporary registrations
- Temporary registrations may be for 1 day to a year
- There is no automatic "renewal" process
- Those seeking to stay over a year are required to apply for registration under the International route

Appendices

List of acronyms

AS	Arts therapists
BS	Biomedical scientists
CH	Chiropodists and podiatrists
CS	Clinical scientists
DH	Dept of Health
DT	Dietitian
HAD	Hearing aid dispensers
HMTCM	Herbal Medicine and Traditional Chinese Medicine practitioners
OT	Occupational therapists
ODP	Operating department practitioners
OR	Orthoptists
PA	Paramedics
PH	Physiotherapists
PHS	Public Health Specialists
PO	Prosthetists and orthotists
PYL	Psychologists
RA	Radiographers
SL	Speech and language therapists
SW	Social Workers in England
BPS	British Psychological Society
HESA	Higher Education Statistics Authority
CFWI	Council for Workforce Intelligence

UK route application & registration monthly phasing - 1

		April	May	June	July	August	September	October	November	December	January	February	March	Total
2012-13	AS	15	6	10	16	65	27	30	28	23	7	14	7	
2011-12	AS	16	9	9	20	47	26	39	33	19	11	17	5	
2010-11	AS	16	18	12	20	25	38	23	23	17	21	18	17	
2009-10	AS	17	13	16	16	26	28	23	26	12	9	11	11	
2008-9	AS	20	12	10	16	25	26	30	13	17	19	16	11	
MEAN	AS	17	12	11	18	38	29	29	25	18	13	15	10	234

Monthly weighting	AS	0.071795	0.049573	0.048718	0.075214	0.160684	0.123932	0.123932	0.105128	0.075214	0.057265	0.064957	0.04359	1
-------------------	----	----------	----------	----------	----------	----------	----------	----------	----------	----------	----------	----------	---------	---

		April	May	June	July	August	September	October	November	December	January	February	March	Total
2012-13	BS	30	27	33	76	148	64	57	64	63	38	46	41	
2011-12	BS	43	41	61	76	91	64	82	87	50	54	61	42	
2010-11	BS	41	47	47	69	111	94	85	70	69	80	46	41	
2009-10	BS	50	33	35	72	98	72	95	85	90	49	36	51	
2008-9	BS	59	64	30	55	96	104	101	82	45	47	36	51	
MEAN	BS	45	42	41	70	109	80	84	78	63	54	45	45	755

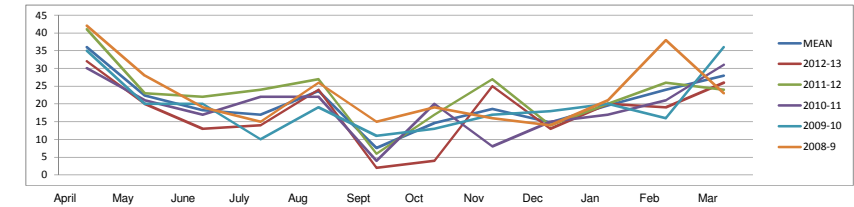
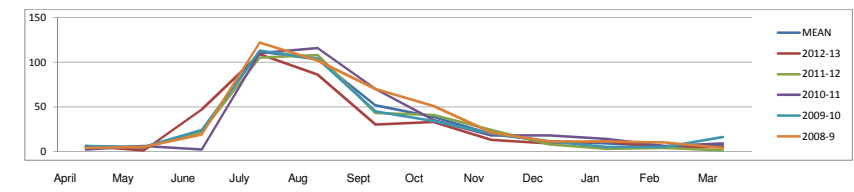
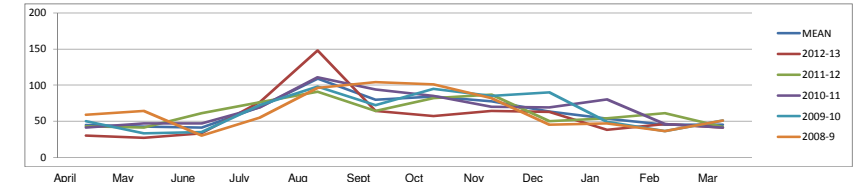
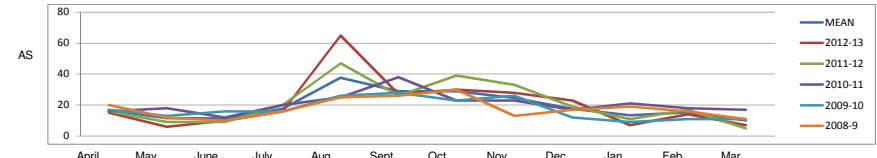
Monthly weighting	BS	0.059073	0.056159	0.05457	0.092185	0.144106	0.10543	0.111258	0.102781	0.083974	0.070993	0.059603	0.059888	1
-------------------	----	----------	----------	---------	----------	----------	---------	----------	----------	----------	----------	----------	----------	---

		April	May	June	July	August	September	October	November	December	January	February	March	Total
2012-13	CH	6	1	47	109	86	30	33	13	9	11	4	5	
2011-12	CH	5	5	22	105	108	43	41	24	8	3	4	1	
2010-11	CH	2	6	2	110	116	70	35	18	18	14	6	9	
2009-10	CH	6	5	24	113	104	45	34	20	11	5	5	16	
2008-9	CH	4	5	19	122	102	70	51	21	11	11	10	4	
MEAN	CH	5	4	23	112	103	52	39	19	11	9	6	7	389

Monthly weighting	CH	0.011813	0.011299	0.058552	0.287108	0.265023	0.132512	0.09964	0.049307	0.029276	0.022599	0.014895	0.017976	1
-------------------	----	----------	----------	----------	----------	----------	----------	---------	----------	----------	----------	----------	----------	---

		April	May	June	July	August	September	October	November	December	January	February	March	Total
2012-13	CS	32	20	13	14	24	2	4	25	13	20	19	26	
2011-12	CS	41	23	22	24	27	6	17	27	14	20	26	24	
2010-11	CS	30	21	17	22	22	4	20	8	15	17	21	31	
2009-10	CS	35	20	20	10	19	11	13	17	18	20	16	36	
2008-9	CS	42	28	19	15	26	15	19	16	14	21	38	23	
MEAN	CS	36	22	18	17	24	8	15	19	15	20	24	28	244

Monthly weighting	CS	0.1473	0.091653	0.074468	0.069558	0.096563	0.031097	0.059738	0.076105	0.060556	0.080196	0.0982	0.114566	1
-------------------	----	--------	----------	----------	----------	----------	----------	----------	----------	----------	----------	--------	----------	---



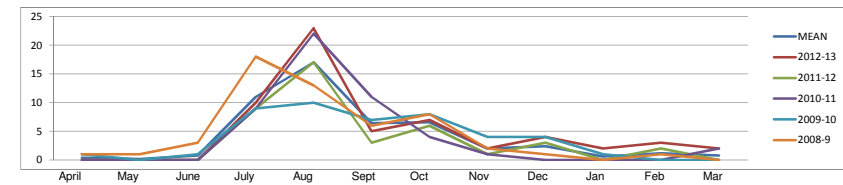
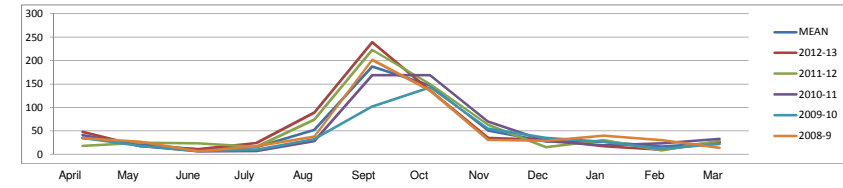
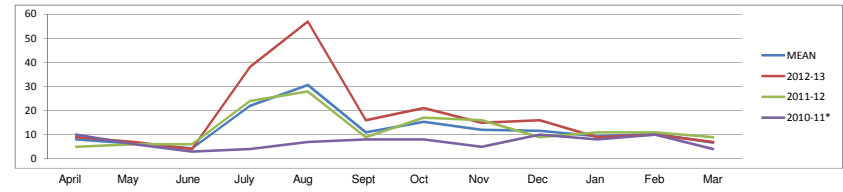
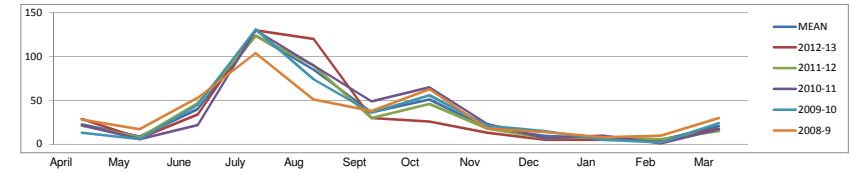
UK route application & registration monthly phasing - 2

		April	May	June	July	August	September	October	November	December	January	February	March	Total
2012-13	DT	29	7	34	130	120	30	26	13	5	5	5	18	
2011-12	DT	21	8	47	124	90	30	46	18	7	8	6	15	
2010-11	DT	22	6	22	130	90	49	65	23	7	10	1	17	
2009-10	DT	13	6	45	131	74	36	56	21	15	5	2	24	
2008-9	DT	28	17	53	104	51	38	63	18	14	8	10	30	
MEAN	DT	23	9	40	124	85	37	51	19	10	7	5	21	429
Monthly weighting	DT	0.052656	0.020503	0.093663	0.288444	0.198043	0.085275	0.119292	0.043336	0.022367	0.016775	0.011184	0.048462	1

		April	May	June	July	August	September	October	November	December	January	February	March	Total
2012-13	HAD	9	7	4	38	57	16	21	15	16	9	10	7	
2011-12	HAD	5	6	6	24	28	9	17	16	9	11	11	9	
2010-11*	1,573 HAD	10	6	3	4	7	8	8	5	10	8	10	4	
2009-10	HAD													
2008-9	HAD													
MEAN	HAD	8	6	4	22	31	11	15	12	12	9	10	7	148
Monthly weighting	HAD	0.054176	0.042889	0.029345	0.148984	0.207675	0.074492	0.103837	0.081264	0.079007	0.063205	0.069977	0.045147	1

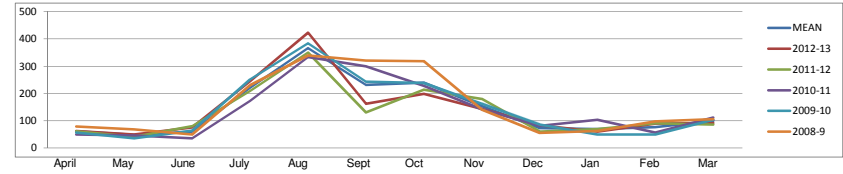
		April	May	June	July	August	September	October	November	December	January	February	March	Total
2012-13	ODP	48	17	11	24	89	239	136	35	31	17	10	26	
2011-12	ODP	18	25	23	16	74	223	150	63	15	30	8	29	
2010-11	ODP	41	18	6	7	28	169	169	70	28	19	23	33	
2009-10	ODP	35	18	7	10	32	102	143	55	35	27	12	22	
2008-9	ODP	34	27	6	17	38	202	136	31	29	40	30	14	
MEAN	ODP	35	21	11	15	52	187	147	51	28	27	17	25	614
Monthly weighting	ODP	0.057329	0.034202	0.017264	0.024104	0.085016	0.30456	0.239088	0.082736	0.044951	0.043322	0.027036	0.040391	1

		April	May	June	July	August	September	October	November	December	January	February	March	Total
2012-13	OR	0	0	0	10	23	5	7	2	4	2	3	2	
2011-12	OR	0	0	0	9	17	3	6	1	3	0	2	0	
2010-11	OR	0	0	0	9	22	11	4	1	0	0	0	2	
2009-10	OR	1	0	1	9	10	7	8	4	4	1	0	0	
2008-9	OR	1	1	3	18	13	6	8	2	1	0	1	0	
MEAN	OR	0	0	1	11	17	6	7	2	2	1	1	1	49
Monthly weighting	OR	0.008097	0.004049	0.016194	0.222672	0.34413	0.129555	0.133603	0.040486	0.048583	0.012146	0.024291	0.016194	1

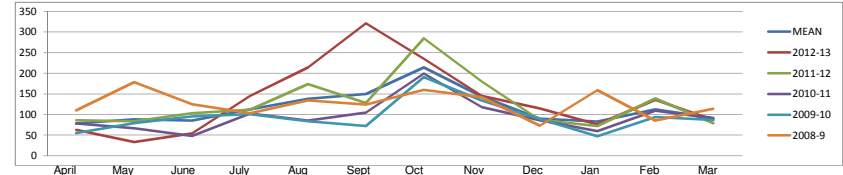


UK route application & registration monthly phasing - 3

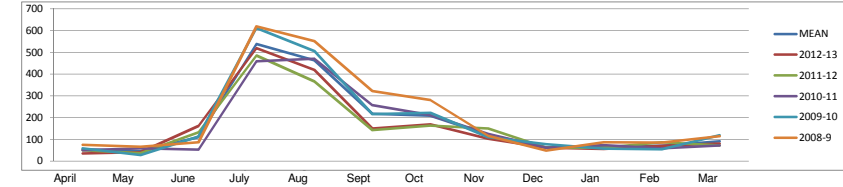
		April	May	June	July	August	September	October	November	December	January	February	March	Total
2012-13	OT	63	50	75	244	423	162	199	144	83	60	89	92	1,702
2011-12	OT	61	41	80	209	350	131	214	180	70	91	86		
2010-11	OT	49	46	35	173	334	299	228	142	81	104	57		
2009-10	OT	57	36	64	251	384	243	239	162	86	49	50		
2008-9	OT	79	68	49	230	340	321	318	141	55	62	98		
MEAN	OT	62	48	61	221	366	231	240	154	73	69	77		
Monthly weighting	OT	0.036319	0.026326	0.035614	0.130113	0.215209	0.135872	0.140809	0.090386	0.042901	0.04055	0.045252	0.058651	1



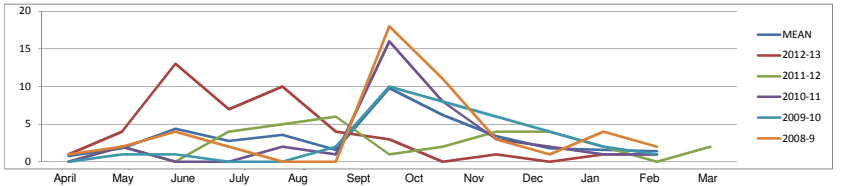
		April	May	June	July	August	September	October	November	December	January	February	March	Total
2012-13	PA	63	33	54	145	214	321	235	145	115	76	136	87	1,387
2011-12	PA	86	84	103	112	174	128	285	180	87	72	139	79	
2010-11	PA	78	67	48	102	85	105	199	118	86	60	109	91	
2009-10	PA	55	79	95	101	84	72	191	134	89	47	94	87	
2008-9	PA	110	178	125	103	134	124	160	142	73	159	85	114	
MEAN	PA	78	88	85	113	138	150	214	144	90	83	113	92	
Monthly weighting	PA	0.056517	0.063581	0.061275	0.081171	0.099625	0.108131	0.154268	0.103662	0.064879	0.059689	0.081171	0.066032	1



		April	May	June	July	August	September	October	November	December	January	February	March	Total
2012-13	PH	35	41	162	518	419	149	168	103	62	55	70	80	2,047
2011-12	PH	49	36	132	484	365	142	163	150	62	62	87	71	
2010-11	PH	49	58	53	459	470	257	211	125	62	73	58	72	
2009-10	PH	59	28	113	611	505	216	222	110	77	57	54	119	
2008-9	PH	75	66	86	619	551	322	281	116	48	87	85	115	
MEAN	PH	53	46	109	538	462	217	209	121	62	67	71	91	
Monthly weighting	PH	0.02609	0.022376	0.053352	0.262947	0.225718	0.106117	0.102111	0.059019	0.030389	0.032636	0.034591	0.044655	1

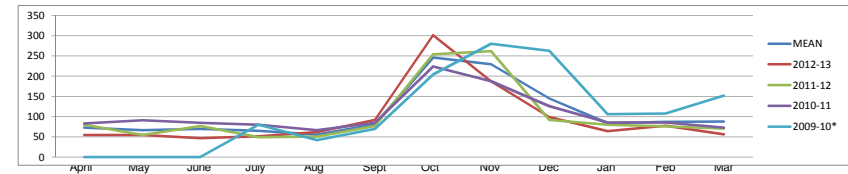


		April	May	June	July	August	September	October	November	December	January	February	March	Total
2012-13	PO	1	4	13	7	10	4	3	0	1	0	1	1	39
2011-12	PO	2	0	4	5	6	1	2	4	4	2	0	2	
2010-11	PO	0	2	0	0	2	1	16	8	3	2	1	1	
2009-10	PO	0	1	1	0	0	2	10	8	6	4	2	1	
2008-9	PO	1	2	4	2	0	0	18	11	3	1	4	2	
MEAN	PO	1	2	4	3	4	2	10	6	3	2	2	1	
Monthly weighting	PO	0.020408	0.045918	0.112245	0.071429	0.091837	0.040816	0.25	0.158163	0.086735	0.045918	0.040816	0.035714	1

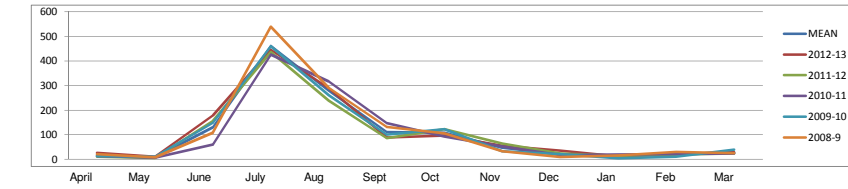


UK route application & registration monthly phasing - 4

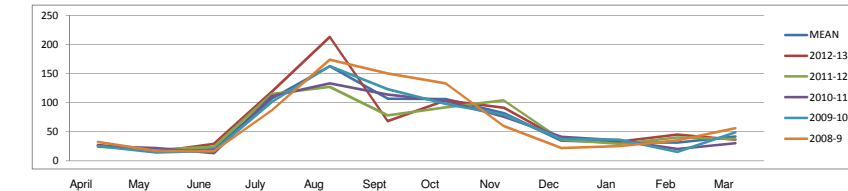
		April	May	June	July	August	September	October	November	December	January	February	March	Total
2012-13	PYL	55	55	47	52	62	92	302	188	99	64	78	56	
2011-12	PYL	80	55	77	49	51	77	254	262	92	80	76	71	
2010-11	PYL	83	91	85	80	67	85	224	188	126	86	86	73	
2009-10*	15,552 PYL	0	0	0	80	42	70	204	280	263	106	108	152	
2008-9	PYL	0	0	0	0	0	0	0	0	0	0	0	0	
MEAN	PYL	73	67	70	65	56	81	246	230	145	84	87	88	1,291
Monthly weighting	PYL	0.056305	0.051915	0.053981	0.050559	0.043004	0.062762	0.190611	0.177827	0.112352	0.065087	0.067411	0.068186	1



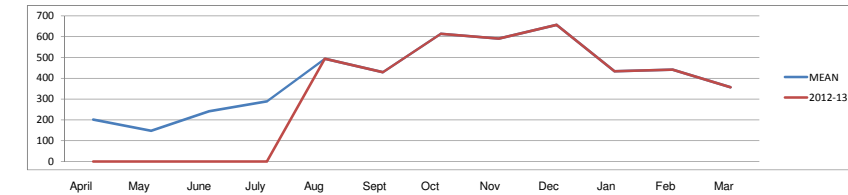
		April	May	June	July	August	September	October	November	December	January	February	March	Total
2012-13	RA	26	11	179	446	289	89	96	55	35	12	21	29	
2011-12	RA	10	5	156	437	239	86	122	64	24	14	20	24	
2010-11	RA	13	6	60	426	317	147	92	52	17	19	21	23	
2009-10	RA	13	10	148	460	261	101	123	33	21	4	10	39	
2008-9	RA	21	8	108	540	290	131	105	33	9	16	30	25	
MEAN	RA	17	8	130	462	279	111	108	47	21	13	20	28	1,244
Monthly weighting	RA	0.013342	0.00643	0.104646	0.371162	0.224401	0.089053	0.086481	0.038097	0.017039	0.010448	0.016396	0.022504	1



		April	May	June	July	August	September	October	November	December	January	February	March	Total
2012-13	SL	27	15	29	119	213	68	104	91	36	33	45	36	
2011-12	SL	24	19	24	115	127	78	92	104	36	29	40	37	
2010-11	SL	25	22	13	111	133	114	103	76	41	35	20	30	
2009-10	SL	25	14	17	101	163	123	98	79	37	36	15	49	
2008-9	SL	32	17	16	87	174	150	133	60	22	25	35	56	
MEAN	SL	27	17	20	107	162	107	106	82	34	32	31	42	766
Monthly weighting	SL	0.034744	0.022727	0.025862	0.139237	0.211599	0.139237	0.138454	0.107106	0.044932	0.041275	0.040491	0.054336	1



		April	May	June	July	August	September	October	November	December	January	February	March	Total
2012-13	88,557 SW	0	0	0	0	494	429	613	591	656	433	441	357	
2011-12														
2010-11														
2009-10														
2008-9														
MEAN	used 2013-14	201	147	241	289	494	429	613	591	656	433	441	357	4,892
Monthly weighting		0.041087	0.030049	0.049264	0.059076	0.100981	0.087694	0.125307	0.120809	0.134096	0.088512	0.090147	0.072976	1



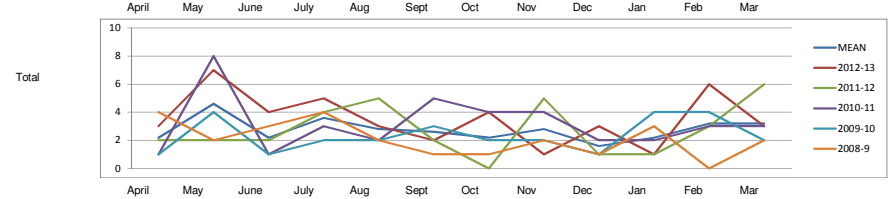
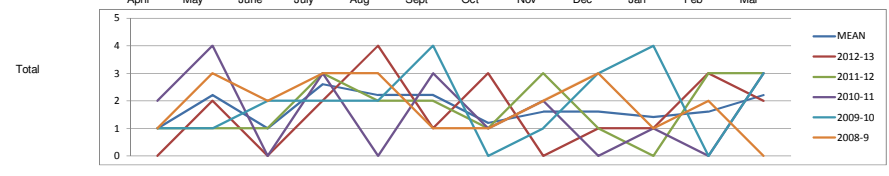
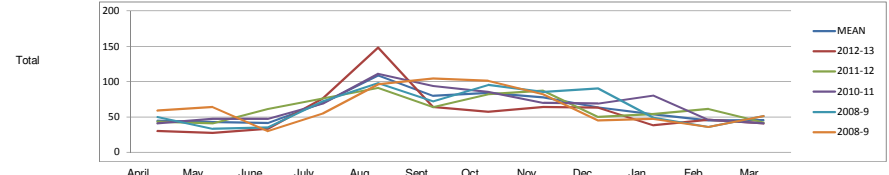
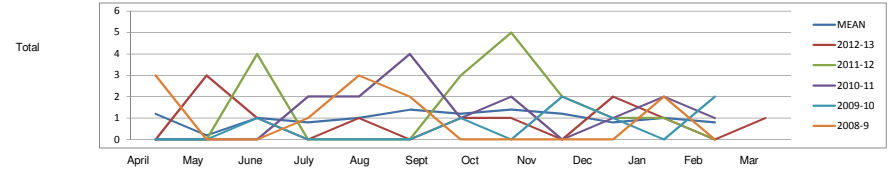
International route application phasing (scrutiny fees) - 1

		April	May	June	July	August	September	October	November	December	January	February	March	
2012-13	AS	3	1	0	1	0	1	1	0	2	1	0	1	11
2011-12	AS	0	0	4	0	0	0	3	5	2	1	1	0	16
2010-11	AS	0	0	0	2	2	4	1	2	0	1	2	1	15
2009-10	AS	0	0	1	0	0	0	1	0	2	1	0	2	7
2008-9	AS	3	0	0	1	3	2	0	0	0	0	2	0	11
MEAN	AS	1	0	1	1	1	1	1	1	1	1	1	1	12
Monthly weighting	AS	0.1 0.016667 0.083333 0.066667 0.083333 0.116667 0.1 0.116667 0.1 0.066667 0.083333 0.066667												1

		April	May	June	July	August	September	October	November	December	January	February	March	
2012-13	BS	8	17	20	27	15	11	18	6	10	14	14	12	172
2011-12	BS	7	6	12	11	11	12	7	27	2	13	17	18	143
2010-11	BS	9	23	11	32	17	33	20	22	17	15	11	10	220
2009-10	BS	19	17	17	12	19	24	18	7	19	13	15	25	205
2008-9	BS	17	18	23	14	22	17	18	18	8	22	21	20	218
MEAN	BS	12	16	17	19	17	19	16	16	11	15	16	17	192
Monthly weighting	BS	0.06263 0.084551 0.086639 0.100209 0.087683 0.101253 0.084551 0.083507 0.058455 0.080376 0.08142 0.088727												1

		April	May	June	July	August	September	October	November	December	January	February	March	
2012-13	CH	0	2	0	2	4	1	3	0	1	1	3	2	19
2011-12	CH	1	1	1	3	2	2	1	3	1	0	3	3	21
2010-11	CH	2	4	0	3	0	3	1	2	0	1	0	3	19
2009-10	CH	1	1	2	2	2	4	0	1	3	4	0	3	23
2008-9	CH	1	3	2	3	3	1	1	2	3	1	2	0	22
MEAN	CH	1	2	1	3	2	2	1	2	2	1	2	2	21
Monthly weighting	CH	0.048077 0.105769 0.048077 0.125 0.105769 0.105769 0.057692 0.076923 0.076923 0.067306 0.076923 0.105769												1

		April	May	June	July	August	September	October	November	December	January	February	March	
2012-13	CS	3	7	4	5	3	2	4	1	3	1	6	3	42
2011-12	CS	2	2	2	4	5	2	0	5	1	1	3	6	33
2010-11	CS	1	8	1	3	2	5	4	4	2	2	3	3	38
2009-10	CS	1	4	1	2	2	3	2	2	1	4	4	2	28
2008-9	CS	4	2	3	4	2	1	1	2	1	3	0	2	25
MEAN	CS	2	5	2	4	3	3	2	3	2	2	3	3	33
Monthly weighting	CS	0.066265 0.138554 0.066265 0.108434 0.084337 0.078313 0.066265 0.084337 0.048193 0.066265 0.096386 0.096386												1



International route application phasing (scrutiny fees) - 2

		April	May	June	July	August	September	October	November	December	January	February	March	
2012-13	DT	14	17	9	8	15	6	11	3	10	4	3	5	105
2011-12	DT	2	8	11	8	6	7	7	19	5	2	15	20	110
2010-11	DT	8	15	4	13	5	13	13	10	5	12	6	8	112
2009-10	DT	13	13	12	7	6	6	3	7	8	8	4	9	96
2008-9	DT	10	4	12	7	9	11	8	5	3	14	16	8	107
MEAN	DT	9	11	10	9	8	9	8	9	6	8	9	10	106

Monthly weighting	DT	0.088679	0.107547	0.090566	0.081132	0.077358	0.081132	0.079245	0.083019	0.058491	0.075472	0.083019	0.09434	1
-------------------	----	----------	----------	----------	----------	----------	----------	----------	----------	----------	----------	----------	---------	---

		April	May	June	July	August	September	October	November	December	January	February	March	
2012-13	HAD	1	1	1	2	0	0	1	0	0	0	1	1	7
2011-12	HAD	0	0	0	1	0	1	0	1	0	1	1	1	6
2010-11*	HAD	0	0	0	0	1	0	0	4	0	0	0	2	7
2009-10	HAD													
2008-9	HAD													
MEAN	HAD	0	0	0	1	0	0	0	2	0	0	0	1	7

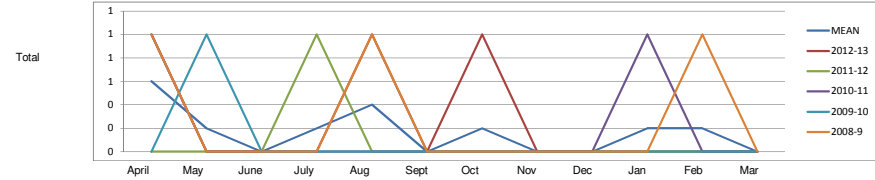
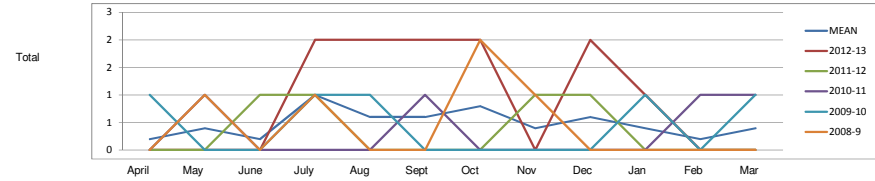
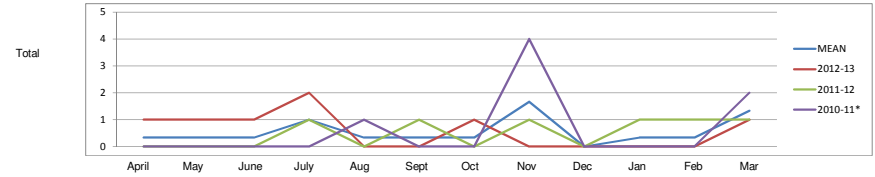
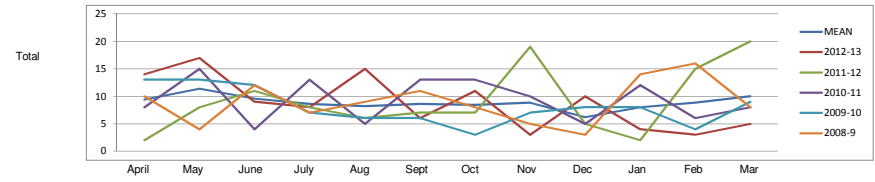
Monthly weighting	HAD	0.05	0.05	0.05	0.15	0.05	0.05	0.05	0.25	0	0.05	0.05	0.2	1
-------------------	-----	------	------	------	------	------	------	------	------	---	------	------	-----	---

		April	May	June	July	August	September	October	November	December	January	February	March	
2012-13	ODP	0	0	0	2	2	2	2	1	2	1	0	0	11
2011-12	ODP	0	0	1	1	0	0	0	1	1	0	0	0	4
2010-11	ODP	0	1	0	0	0	1	0	0	0	0	1	1	4
2009-10	ODP	1	0	0	1	1	0	0	0	0	1	0	1	5
2008-9	ODP	0	1	0	1	0	0	2	1	0	0	0	0	5
MEAN	ODP	0	0	0	1	1	1	1	0	1	0	0	0	6

Monthly weighting	ODP	0.034483	0.068966	0.034483	0.172414	0.103448	0.103448	0.137931	0.068966	0.103448	0.068966	0.034483	0.068966	1
-------------------	-----	----------	----------	----------	----------	----------	----------	----------	----------	----------	----------	----------	----------	---

		April	May	June	July	August	September	October	November	December	January	February	March	
2012-13	OR	1	0	0	0	0	1	0	1	0	0	0	0	3
2011-12	OR	1	0	0	1	0	0	0	0	0	0	0	0	1
2010-11	OR	1	0	0	0	0	0	0	0	0	1	0	0	2
2009-10	OR	0	1	0	0	0	0	0	0	0	0	0	0	1
2008-9	OR	1	0	0	0	1	0	0	0	0	0	1	0	3
MEAN	OR	1	0	0	0	0	0	0	0	0	0	0	0	2

Monthly weighting	OR	0.3	0.1	0	0.1	0.2	0	0.1	0	0	0.1	0.1	0	1
-------------------	----	-----	-----	---	-----	-----	---	-----	---	---	-----	-----	---	---



International route application phasing (scrutiny fees) - 3

		April	May	June	July	August	September	October	November	December	January	February	March	
2012-13	OT	14	21	20	25	24	24	36	8	18	21	26	19	256
2011-12	OT	13	20	23	9	15	29	13	38	7	19	22	50	258
2010-11	OT	16	42	13	25	14	44	42	35	26	28	21	18	324
2009-10	OT	25	21	22	12	33	23	15	17	33	21	21	22	265
2008-9	OT	25	20	31	10	17	21	36	32	23	49	29	37	330
MEAN	OT	19	25	22	16	21	28	28	26	21	28	24	29	287

Monthly weighting	OT	0.064899	0.086532	0.076064	0.056525	0.071877	0.098395	0.099093	0.090719	0.074669	0.096301	0.083043	0.101884	1
-------------------	----	----------	----------	----------	----------	----------	----------	----------	----------	----------	----------	----------	----------	---

		April	May	June	July	August	September	October	November	December	January	February	March	
2012-13	PA	4	2	4	3	2	2	5	2	1	2	4	3	34
2011-12	PA	4	1	1	2	1	5	2	4	0	3	1	1	25
2010-11	PA	3	3	0	4	1	7	3	3	1	1	0	1	27
2009-10	PA	1	3	3	1	3	1	3	2	3	0	3	5	28
2008-9	PA	2	0	1	1	2	0	3	0	3	5	3	6	26
MEAN	PA	3	2	2	2	2	3	3	2	2	2	2	3	28

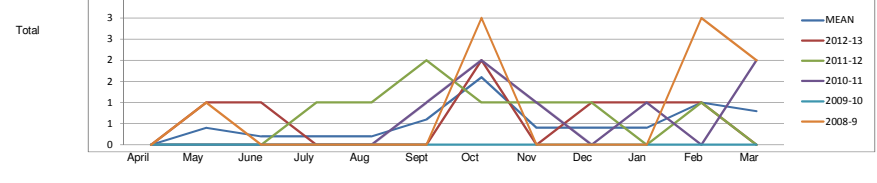
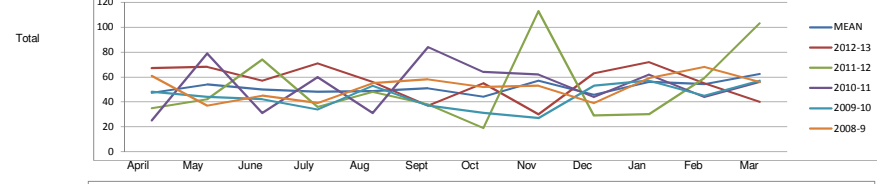
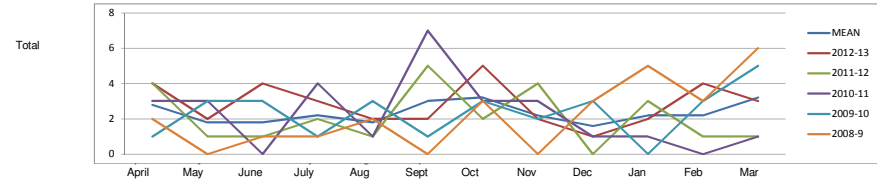
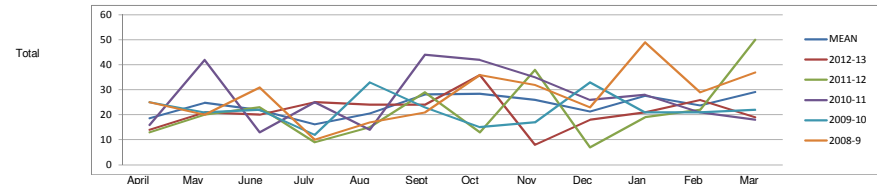
Monthly weighting	PA	0.1	0.064286	0.064286	0.078571	0.064286	0.107143	0.114286	0.078571	0.057143	0.078571	0.078571	0.114286	1
-------------------	----	-----	----------	----------	----------	----------	----------	----------	----------	----------	----------	----------	----------	---

		April	May	June	July	August	September	October	November	December	January	February	March	
2012-13	PH	67	68	57	71	56	37	55	30	63	72	55	40	671
2011-12	PH	35	42	74	36	48	38	19	113	29	30	59	103	626
2010-11	PH	25	79	31	60	31	84	64	62	44	62	44	56	642
2009-10	PH	48	44	42	34	53	37	31	27	53	57	45	57	528
2008-9	PH	61	37	45	39	55	58	52	53	39	59	68	56	622
MEAN	PH	47	54	50	48	49	51	44	57	46	56	54	62	618

Monthly weighting	PH	0.0764	0.087407	0.080609	0.077695	0.078666	0.082227	0.071544	0.092263	0.07381	0.090644	0.087731	0.101004	1
-------------------	----	--------	----------	----------	----------	----------	----------	----------	----------	---------	----------	----------	----------	---

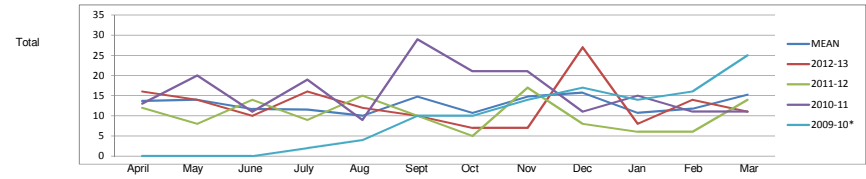
		April	May	June	July	August	September	October	November	December	January	February	March	
2012-13	PO	0	1	1	0	0	0	2	0	1	1	1	0	7
2011-12	PO	0	0	0	1	1	2	1	1	1	0	1	0	8
2010-11	PO	0	0	0	0	0	1	2	1	0	1	0	2	7
2009-10	PO	0	0	0	0	0	0	0	0	0	0	0	0	9
2008-9	PO	0	1	0	0	0	0	3	0	0	0	3	2	6
MEAN	PO	0	0	0	0	0	1	2	0	0	0	1	1	6

Monthly weighting	PO	0	0.064516	0.032258	0.032258	0.032258	0.096774	0.258065	0.064516	0.064516	0.064516	0.16129	0.129032	1
-------------------	----	---	----------	----------	----------	----------	----------	----------	----------	----------	----------	---------	----------	---

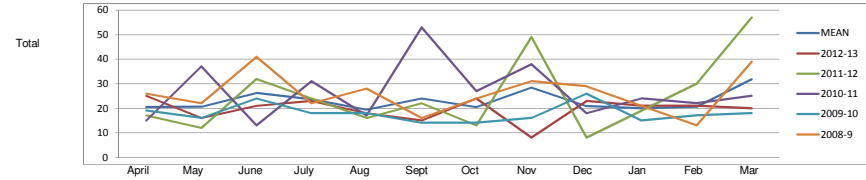


International route application phasing (scrutiny fees) - 4

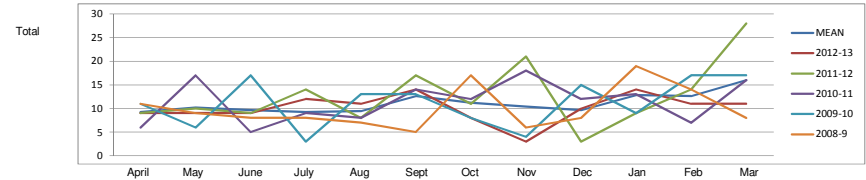
		April	May	June	July	August	September	October	November	December	January	February	March		
2012-13	PYL	16	14	14	10	16	12	10	7	7	27	8	14	11	152
2011-12	PYL	12	8	14	9	15	10	10	5	17	8	6	14	124	
2010-11	PYL	13	20	11	19	9	23	21	21	11	15	11	11	191	
2009-10*	PYL	0	0	0	2	4	10	10	14	17	14	16	25	112	
2008-9	PYL														
MEAN	PYL	14	14	12	12	10	15	11	15	16	11	12	15	155	
Monthly weighting	PYL	0.08841	0.090566	0.075472	0.074394	0.06469	0.095418	0.069542	0.095418	0.101887	0.069542	0.076011	0.098652	1	



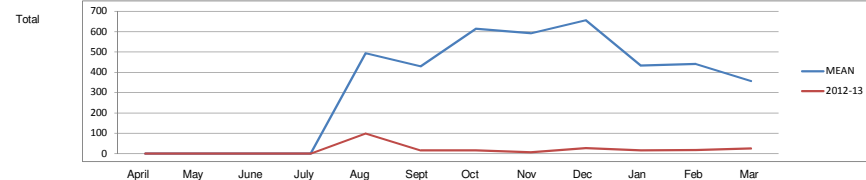
		April	May	June	July	August	September	October	November	December	January	February	March	
2012-13	RA	25	16	21	23	18	15	24	8	23	21	21	20	235
2011-12	RA	17	12	32	24	16	22	13	49	8	19	30	57	299
2010-11	RA	15	37	13	31	17	53	27	38	18	24	22	25	320
2009-10	RA	19	16	24	18	18	14	14	16	26	15	17	18	215
2008-9	RA	26	22	41	22	28	16	24	31	29	21	13	39	312
MEAN	RA	20	21	26	24	19	24	20	28	21	20	21	32	276
Monthly weighting	RA	0.07386	0.074584	0.094859	0.085445	0.070239	0.086894	0.07386	0.102824	0.075308	0.072411	0.074584	0.115134	1



		April	May	June	July	August	September	October	November	December	January	February	March	
2012-13	SL	9	9	9	9	12	11	14	8	3	10	14	11	121
2011-12	SL	9	10	9	14	8	17	11	21	3	9	14	28	153
2010-11	SL	6	17	5	9	8	14	12	18	12	13	7	16	137
2009-10	SL	11	6	17	3	13	13	8	4	15	9	17	17	133
2008-9	SL	11	9	8	8	7	5	17	6	8	19	14	8	120
MEAN	SL	9	10	10	9	9	13	11	10	10	13	13	16	133
Monthly weighting	SL	0.069277	0.076807	0.072289	0.069277	0.070783	0.09488	0.084337	0.078313	0.072289	0.096386	0.09488	0.120482	1



		April	May	June	July	August	September	October	November	December	January	February	March	
2012-13	SW	0	0	0	0	0	98	15	15	6	26	16	17	218
2011-12														
2010-11														
2009-10														
2008-9														
MEAN		0	0	0	0	494	429	613	591	656	433	441	357	4,014
Monthly weighting		0	0	0	0	0.123069	0.106876	0.152715	0.147235	0.163428	0.107872	0.109865	0.088939	1



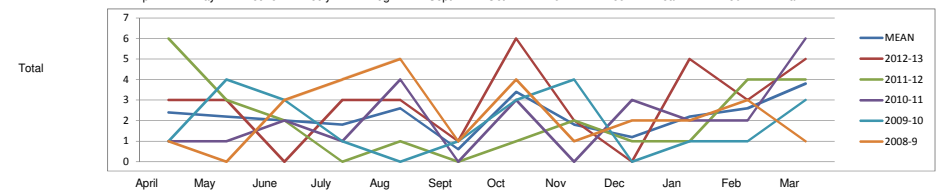
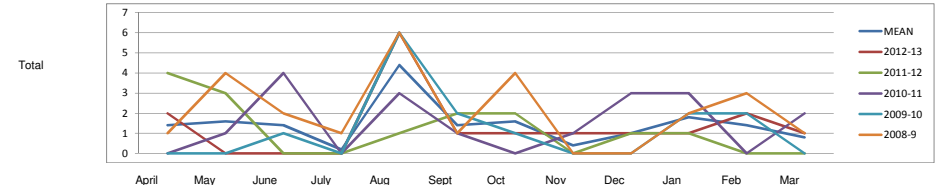
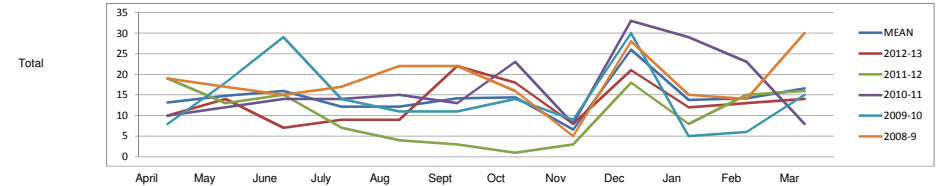
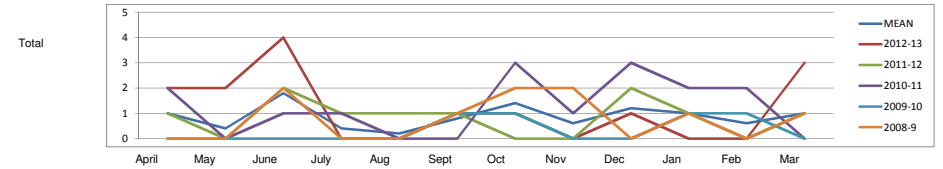
International route registration phasing - 1

		April	May	June	July	August	September	October	November	December	January	February	March	
2012-13	AS	2	2	4	0	0	1	1	0	1	0	0	3	10
2011-12	AS	1	0	2	1	1	1	0	0	2	1	0	1	
2010-11	AS	2	0	1	1	0	0	3	1	3	2	2	0	
2009-10	AS	0	0	0	0	0	1	1	0	0	1	1	0	
2008-9	AS	0	0	2	0	0	1	2	2	0	1	0	1	
MEAN	AS	1	0	2	0	0	1	1	1	1	1	1	1	
Monthly weighting	AS	0.096154	0.038462	0.173077	0.038462	0.019231	0.076923	0.134615	0.057692	0.115385	0.096154	0.057692	0.096154	1

		April	May	June	July	August	September	October	November	December	January	February	March	
2012-13	BS	10	14	7	9	9	22	18	8	21	12	13	14	174
2011-12	BS	19	13	15	7	4	3	1	3	18	8	15	16	
2010-11	BS	10	12	14	14	15	13	23	8	33	29	23	8	
2009-10	BS	8	18	29	14	11	11	14	9	30	5	6	15	
2008-9	BS	19	17	15	17	22	22	16	5	28	15	14	30	
MEAN	BS	13	15	16	12	12	14	14	7	26	14	14	17	
Monthly weighting	BS	0.075775	0.06496	0.091848	0.070034	0.070034	0.081515	0.082664	0.037887	0.149254	0.079219	0.081515	0.095293	1

		April	May	June	July	August	September	October	November	December	January	February	March	
2012-13	CH	2	0	0	0	6	1	1	1	1	1	2	1	17
2011-12	CH	4	3	0	0	1	2	2	0	1	1	0	0	
2010-11	CH	0	1	4	0	3	1	0	1	3	3	0	2	
2009-10	CH	0	0	1	0	6	2	1	0	0	2	2	0	
2008-9	CH	1	4	2	1	6	1	4	0	0	2	3	1	
MEAN	CH	1	2	1	0	4	1	2	0	1	2	1	1	
Monthly weighting	CH	0.08046	0.091954	0.08046	0.011494	0.252874	0.08046	0.091954	0.022989	0.057471	0.103448	0.08046	0.045977	1

		April	May	June	July	August	September	October	November	December	January	February	March	
2012-13	CS	3	3	0	3	3	1	6	2	0	5	3	5	27
2011-12	CS	6	3	2	0	1	0	1	2	1	1	4	4	
2010-11	CS	1	1	2	1	4	0	3	0	3	2	2	6	
2009-10	CS	1	4	3	1	0	1	3	4	0	1	1	3	
2008-9	CS	1	0	3	4	5	1	4	1	2	2	3	1	
MEAN	CS	2	2	2	2	3	1	3	2	1	2	3	4	
Monthly weighting	CS	0.090226	0.082707	0.075188	0.067669	0.097744	0.022556	0.12782	0.067669	0.045113	0.082707	0.097744	0.142857	1



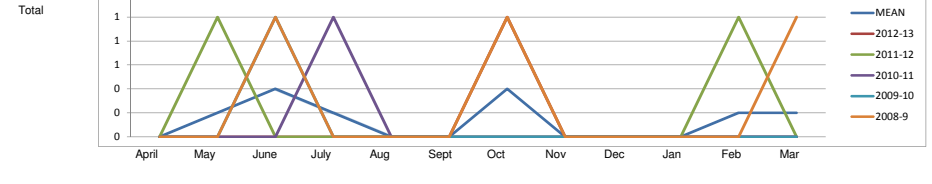
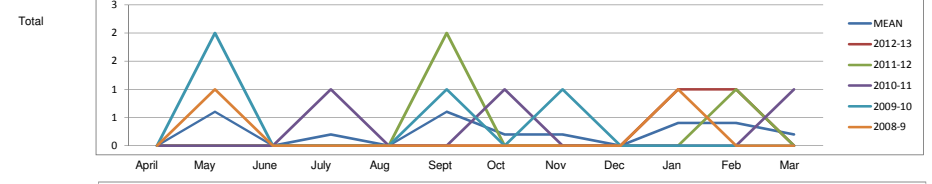
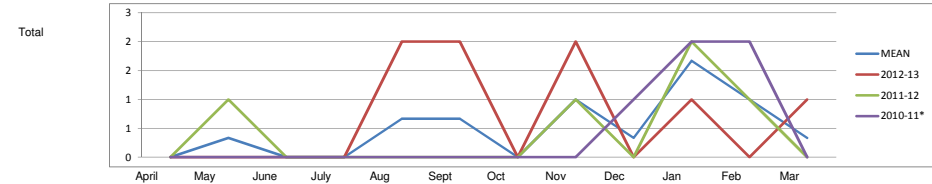
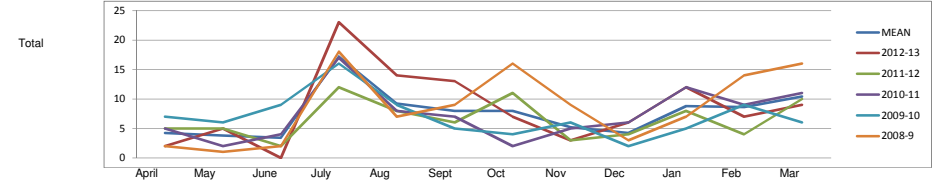
International route registration phasing -2

		April	May	June	July	August	September	October	November	December	January	February	March	
2012-13	DT	2	5	0	25	14	13	7	3	6	12	7	9	91
2011-12	DT	5	5	2	12	8	6	11	3	4	8	4	10	
2010-11	DT	5	2	4	17	8	7	2	5	6	12	9	11	
2009-10	DT	7	6	9	16	9	5	4	6	2	5	9	6	
2008-9	DT	2	1	2	18	7	9	16	9	3	7	14	16	
MEAN	DT	4	4	3	17	9	8	8	5	4	9	9	10	
Monthly weighting	DT	0.046154 0.041758 0.037363 0.189011 0.101099 0.087912 0.087912 0.057143 0.046154 0.096703 0.094505 0.114286												1

		April	May	June	July	August	September	October	November	December	January	February	March	
2012-13	HAD	0	0	0	0	2	2	0	2	0	1	0	1	6
2011-12	HAD	0	1	0	0	0	0	0	1	0	2	1	0	
2010-11*	HAD	0	0	0	0	0	0	0	0	1	2	2	0	
2009-10	HAD	0	0	0	0	0	0	0	0	0	0	0	0	
2008-9	HAD	0	0	0	0	0	0	0	0	0	0	0	0	
MEAN	HAD	0	0	0	0	1	1	0	1	0	2	1	0	
Monthly weighting	HAD	0 0.055556 0 0 0.111111 0.111111 0 0.166667 0.055556 0.277778 0.166667 0.055556												1

		April	May	June	July	August	September	October	November	December	January	February	March	
2012-13	ODP	0	0	0	0	0	0	0	0	0	1	1	0	3
2011-12	ODP	0	0	0	0	0	2	0	0	0	0	1	0	
2010-11	ODP	0	0	0	1	0	0	1	0	0	0	0	1	
2009-10	ODP	0	2	0	0	0	1	0	1	0	0	0	0	
2008-9	ODP	0	1	0	0	0	0	0	0	0	1	0	0	
MEAN	ODP	0	1	0	0	0	1	0	0	0	0	0	0	
Monthly weighting	ODP	0 0.214286 0 0.071429 0 0.214286 0.071429 0.071429 0 0.142857 0.142857 0.071429												1

		April	May	June	July	August	September	October	November	December	January	February	March	
2012-13	OR	0	0	0	0	0	0	1	0	0	0	0	0	2
2011-12	OR	0	1	0	0	0	0	0	0	0	0	1	0	
2010-11	OR	0	0	0	1	0	0	0	0	0	0	0	0	
2009-10	OR	0	0	1	0	0	0	0	0	0	0	0	0	
2008-9	OR	0	0	1	0	0	0	1	0	0	0	0	1	
MEAN	OR	0	0	0	0	0	0	0	0	0	0	0	0	
Monthly weighting	OR	0 0.125 0.25 0.125 0 0 0.25 0 0 0 0 0.125 0.125												1



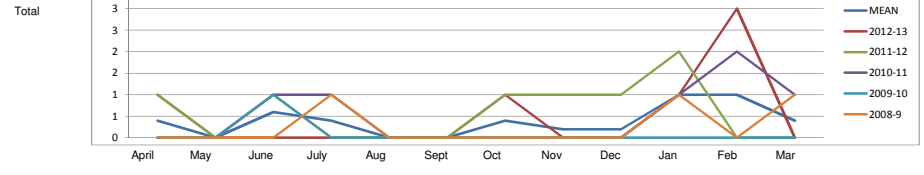
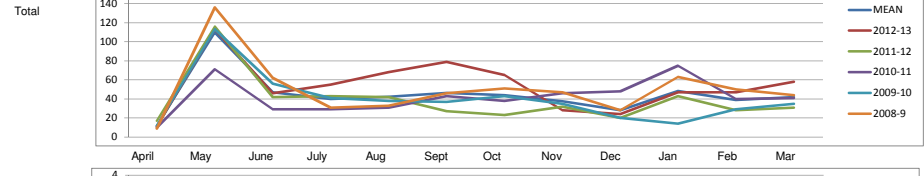
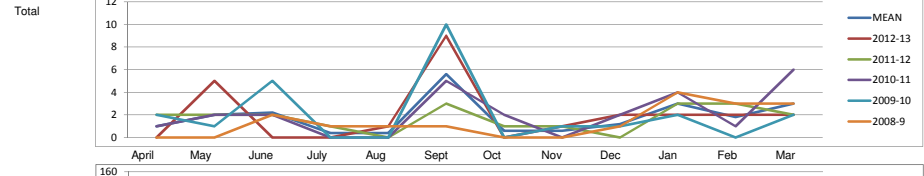
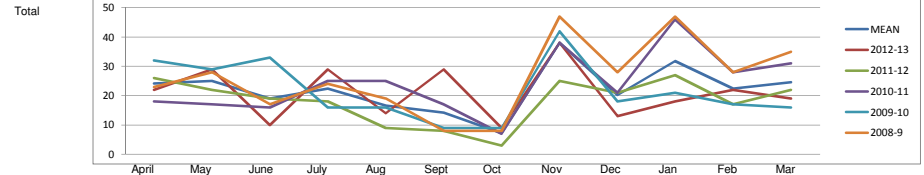
International route registration phasing - 3

		April	May	June	July	August	September	October	November	December	January	February	March	
2012-13	OT	22	29	10	29	14	29	9	38	13	18	22	19	266
2011-12	OT	26	22	19	18	9	8	3	25	21	27	17	22	
2010-11	OT	18	17	16	25	25	17	7	38	21	46	28	31	
2009-10	OT	32	29	33	16	16	9	9	42	18	21	17	16	
2008-9	OT	23	28	17	24	19	8	8	47	28	47	28	35	
MEAN	OT	24	25	19	22	17	14	7	38	20	32	22	25	
Monthly weighting	OT	0.091114	0.094127	0.071536	0.084337	0.0625	0.053464	0.027108	0.143072	0.076054	0.119729	0.084337	0.09262	1

		April	May	June	July	August	September	October	November	December	January	February	March	
2012-13	PA	0	5	0	0	1	9	0	1	2	2	2	2	22
2011-12	PA	2	2	2	1	0	3	1	1	0	3	3	2	
2010-11	PA	1	2	0	0	0	5	2	0	2	4	1	6	
2009-10	PA	2	1	5	0	0	10	0	1	1	2	0	2	
2008-9	PA	0	0	2	1	1	1	0	0	1	4	3	3	
MEAN	PA	1	2	2	0	0	6	1	1	1	3	2	3	
Monthly weighting	PA	0.045872	0.091743	0.100917	0.018349	0.018349	0.256881	0.027523	0.027523	0.055046	0.137615	0.082569	0.137615	1

		April	May	June	July	August	September	October	November	December	January	February	March	
2012-13	PH	11	113	46	55	68	79	65	28	24	47	47	58	536
2011-12	PH	17	116	42	43	42	27	23	32	20	43	28	31	
2010-11	PH	10	71	29	29	31	43	38	46	48	75	40	41	
2009-10	PH	12	113	56	41	38	37	43	35	20	14	29	35	
2008-9	PH	9	136	62	31	33	46	51	47	28	63	50	44	
MEAN	PH	12	110	47	40	42	46	44	38	28	48	39	42	
Monthly weighting	PH	0.022023	0.204927	0.087719	0.074281	0.079134	0.086599	0.08212	0.070175	0.052258	0.090332	0.072415	0.078014	1

		April	May	June	July	August	September	October	November	December	January	February	March	
2012-13	PO	1	0	0	0	0	0	0	0	0	1	3	0	5
2011-12	PO	1	0	1	0	0	0	1	1	1	2	0	0	
2010-11	PO	0	0	1	1	0	0	0	0	0	1	2	1	
2009-10	PO	0	0	1	0	0	0	0	0	0	0	0	0	
2008-9	PO	0	0	0	1	0	0	0	0	0	1	0	1	
MEAN	PO	0	0	1	0	0	0	0	0	0	1	1	0	
Monthly weighting	PO	0.086957	0	0.130435	0.086957	0	0	0.086957	0.043478	0.043478	0.217391	0.217391	0.086957	1



International route registration phasing - 4

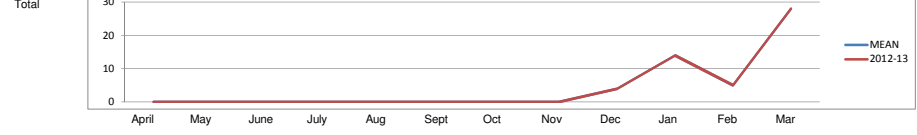
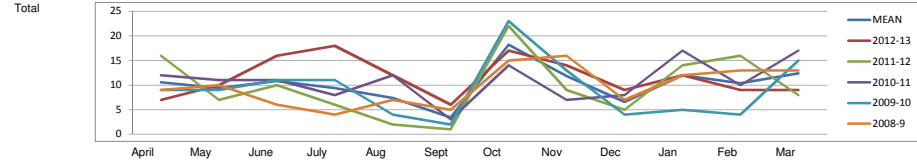
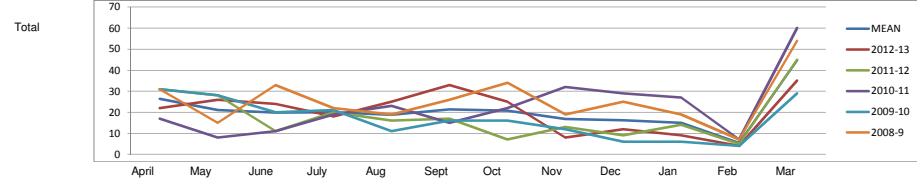
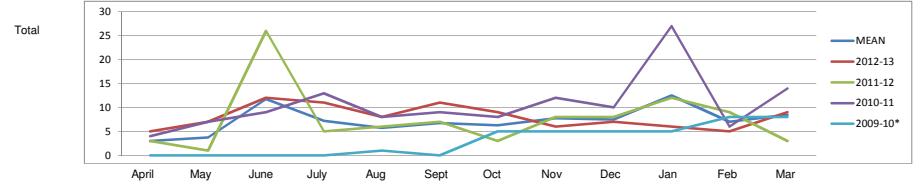
		April	May	June	July	August	September	October	November	December	January	February	March	
2012-13	PYL	5	7	12	11	8	11	9	6	7	6	5	9	88
2011-12	PYL	3	7	26	5	6	7	3	8	8	12	9	3	
2010-11	PYL	4	7	9	13	8	9	8	12	10	27	6	14	
2009-10*	PYL	0	0	0	0	1	0	5	5	5	8	8	8	
2008-9	PYL	0	0	0	0	0	0	0	0	0	0	0	0	
MEAN	PYL	3	4	12	7	6	7	6	8	8	13	7	9	
Monthly weighting	PYL	0.034188 0.042735 0.133903 0.082621 0.065527 0.076923 0.071225 0.088319 0.08547 0.14245 0.079772 0.096866												1

		April	May	June	July	August	September	October	November	December	January	February	March	
2012-13	RA	22	26	24	18	25	33	25	8	12	9	4	35	246
2011-12	RA	31	28	11	20	16	17	7	13	9	14	5	45	
2010-11	RA	17	8	11	19	23	15	22	32	29	27	7	60	
2009-10	RA	31	28	20	21	11	16	12	6	6	4	29	29	
2008-9	RA	31	15	33	22	19	26	34	19	25	19	7	54	
MEAN	RA	26	21	20	20	19	21	21	17	16	15	5	45	
Monthly weighting	RA	0.10723 0.085297 0.080422 0.081235 0.076361 0.086921 0.084484 0.068237 0.0658 0.060926 0.021933 0.181154												1

		April	May	June	July	August	September	October	November	December	January	February	March	
2012-13	SL	7	10	16	18	12	6	17	14	9	12	9	9	122
2011-12	SL	16	7	10	6	2	1	22	9	5	14	16	8	
2010-11	SL	12	11	11	8	12	3	14	7	8	17	10	17	
2009-10	SL	9	9	11	11	4	2	23	13	4	5	4	15	
2008-9	SL	9	10	6	4	7	5	15	16	7	12	13	13	
MEAN	SL	11	9	11	9	7	3	18	12	7	12	10	12	
Monthly weighting	SL	0.086601 0.076797 0.088235 0.076797 0.060458 0.027778 0.148693 0.096405 0.053922 0.098039 0.084967 0.101307												1

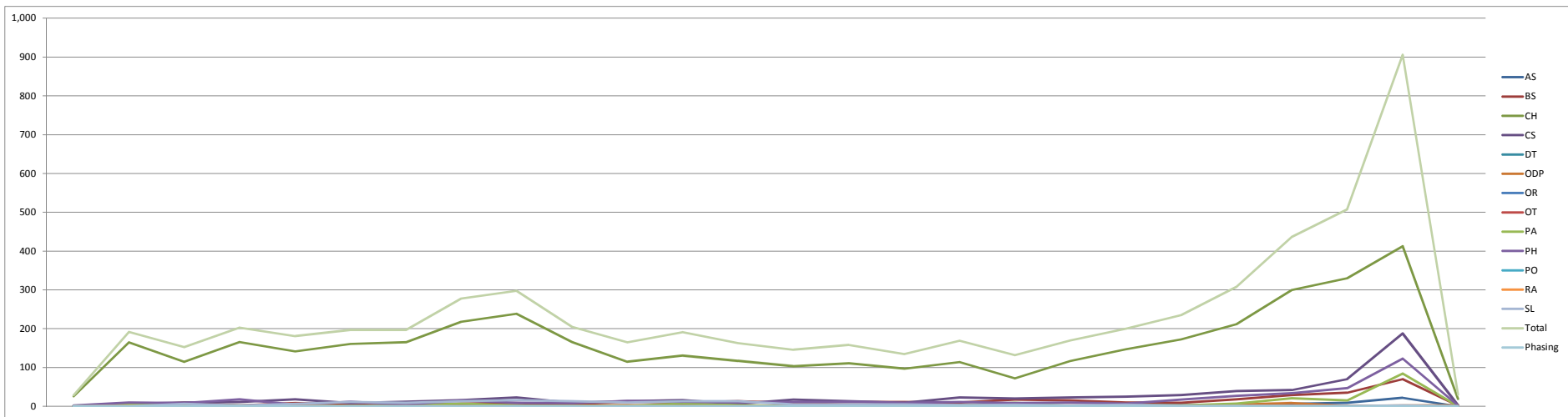
		April	May	June	July	August	September	October	November	December	January	February	March	
2012-13	SW	0	0	0	0	0	0	0	0	4	14	5	28	51
2011-12	SW	0	0	0	0	0	0	0	0	0	0	0	0	
2010-11	SW	0	0	0	0	0	0	0	0	0	0	0	0	
2009-10	SW	0	0	0	0	0	0	0	0	0	0	0	0	
2008-9	SW	0	0	0	0	0	0	0	0	0	0	0	0	
MEAN	SW	0	0	0	0	0	0	0	0	4	14	5	28	
Monthly weighting	SW	0.083333 0.083333 0.083333 0.083333 0.083333 0.083333 0.083333 0.083333 0.083333 0.083333 0.083333 0.083333 0.083333												1

FIXED for first year due to lack of data



Grandparenting model phasing based on two year window

Month of GP cycle	1	2	3	4	5	6	7	8	9	10	11	12	13	14	15	16	17	18	19	20	21	22	23	24	25	26	
AS	0	0	1	0	1	0	1	2	0	3	0	1	1	1	4	2	3	1	1	3	3	1	6	9	22	0	
BS	1	4	9	2	8	4	2	7	8	5	12	10	13	8	11	11	10	17	15	10	9	18	29	35	70	2	
CH	26	165	115	166	142	161	165	218	239	166	115	131	117	103	111	97	114	72	117	147	173	212	300	330	413	19	
CS	0	6	10	11	18	8	12	16	23	9	13	16	6	17	13	9	23	20	23	25	29	39	42	70	188	3	
DT	0	0	0	0	0	0	2	0	0	0	0	0	0	0	0	0	0	0	0	0	0	0	1	0	0	0	
ODP	1	3	1	1	0	0	2	2	1	2	3	1	0	0	2	1	0	1	2	1	0	4	8	1	2	3	
OR	0	1	0	0	0	0	0	0	0	0	0	0	0	0	0	0	0	0	0	0	0	0	0	0	0	0	
OT	0	0	0	0	0	0	0	0	0	0	0	1	0	0	0	1	0	0	0	0	1	0	1	1	1	0	
PA	0	5	4	2	1	1	2	7	2	1	1	7	3	1	2	0	2	9	1	3	2	7	21	15	85	1	
PH	2	10	8	18	4	12	4	15	9	8	14	12	10	11	12	9	11	8	10	7	17	27	34	47	123	2	
PO	0	0	0	1	0	0	0	0	1	0	0	0	0	0	0	0	0	0	0	1	0	0	0	0	0	0	
RA	0	1	0	1	1	0	0	0	0	0	0	0	0	0	0	0	0	0	0	0	1	1	1	0	0	0	
SL	0	0	6	2	6	11	9	13	16	13	10	13	13	5	5	5	3	4	2	4	1	1	1	0	2	0	
Total	29	192	153	203	181	197	197	278	298	205	165	191	163	146	158	135	169	132	170	200	235	308	437	508	906	30	5,986
Phasing	0.005	0.032	0.026	0.034	0.030	0.033	0.033	0.046	0.050	0.034	0.028	0.032	0.027	0.024	0.026	0.023	0.028	0.022	0.028	0.033	0.039	0.051	0.073	0.085	0.151	0.095	1



Assume GP periods will be two years only, but no current start dates

Profession renewal periods

2007/09/11/13/15/17/19												2008/10/12/14/16/18/20											
Jan	Feb	Mar	Apr	May	Jun	Jul	Aug	Sep	Oct	Nov	Dec	Jan	Feb	Mar	Apr	May	Jun	Jul	Aug	Sep	Oct	Nov	Dec
		PYL			OR/PA			BS			RA		AS						ODP				
						PO/SLT/CS							PH		CH/HAD								
						OT								DT						SW			

2 year registration cycle by profession

	Year 1												Year 2												Year 3												Year 4												Year 5																							
	Apr	May	Jun	Jul	Aug	Sep	Oct	Nov	Dec	Jan	Feb	Mar	Apr	May	Jun	Jul	Aug	Sep	Oct	Nov	Dec	Jan	Feb	Mar	Apr	May	Jun	Jul	Aug	Sep	Oct	Nov	Dec	Jan	Feb	Mar	Apr	May	Jun	Jul	Aug	Sep	Oct	Nov	Dec	Jan	Feb	Mar	Apr	May	Jun	Jul	Aug	Sep	Oct	Nov	Dec	Jan	Feb	Mar												
Current Professions																																																																								
Arts Therapists													80												84												84												84																							
Biomedical Scientists	76												76												80												84												84												84											
Chiroprodists	76												80												84												84												84												84											
Clinical Scientists	76												76												80												84												84												84											
Dieticians	76												80												84												84												84												84											
Hearing Aid Dispensers	76												80												84												84												84												84											
Occupational Therapists	76												76												80												84												84												84											
Operating Departmental Practitioners	76												76												80												84												84												84											
Orthoptists	76												76												80												84												84												84											
Paramedics	76												76												80												84												84												84											
Physiotherapists	76												80												84												84												84												84											
Practitioner Psychologists	76												80												84												84												84												84											
Prosthetists & Orthoptists	76												76												80												84												84												84											
Radiographers	76												76												80												84												84												84											
Social Workers	76												80												84												84												84												84											
Speech & Language Therapists	76												76												80												84												84												84											
New Professions																																																																								
Healthcare Scientists													80												80												84												84																							
Public Health Specialists													80												80												84												84																							