

Human Resources, Partners – Kathryn Neuschafer

Recruitment

All occupational therapy and hearing aid dispenser visitor vacancies were filled in the recent recruitment campaign.

Shortlisting is currently in progress for the visitor practitioner psychologists (counselling and occupational) and for registration assessor practitioner psychologists (counselling, educational and health).

Shortlisting is also in progress for panel members for prosthetist/orthotist and operating department practitioner and for visitor arts therapists.

Interviews for the above roles are scheduled for the week commencing 21 March 2011.

Ten appointable lay panel members who were interviewed in October 2010 were contacted and offered appointments due to the projected increase in hearings in 2011 -12 and beyond. All ten individuals accepted and will be trained in May 2011.

Training

There was no training scheduled for February and March 2011. The team is currently scheduling refresher training for all eligible partners for 2011-12.

Partner Resignations

One chiropodist/podiatrist visitor and one CPD assessor resigned in January 2011. One prosthetist/orthotist visitor resigned in February 2011.

Partner Appraisals

Partner appraisals have been scheduled for March. Twenty-five visitors will be appraised across three annual monitoring days and the visit schedule. Seven panel member appraisals have been scheduled and seven pairs of Registration Assessors.

Feedback from appraisals undertaken in February is being collated and distributed to appraisees.

The panel member and panel chair self assessment forms have been distributed to the remaining 43 partners whose agreements are up for renewal.

Team Information

The partner team has also been working on recruitment and training plans for 2011-2012.

Health Professions Council

Partner Breakdown Report April 2009 - March 2011

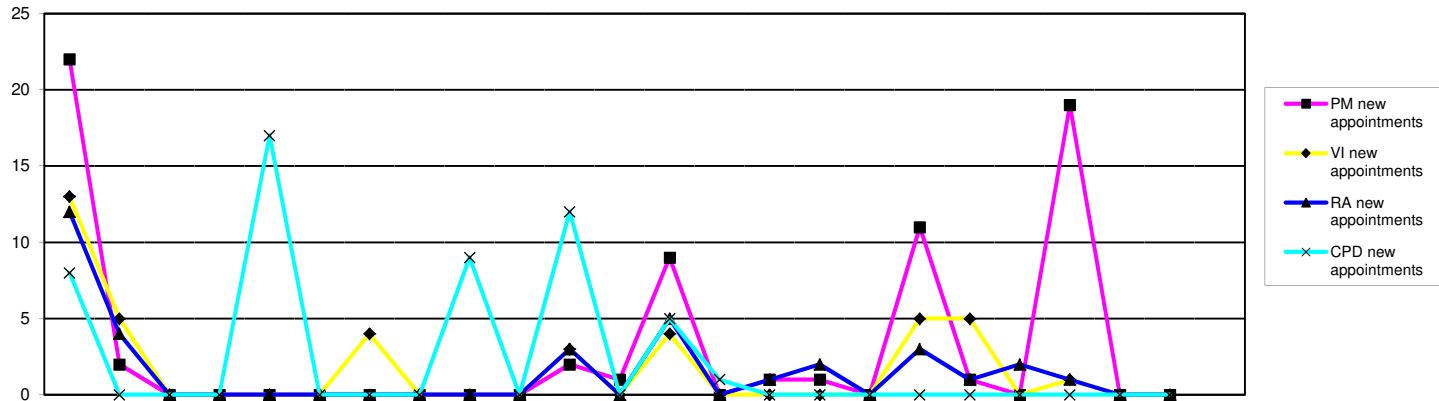
Human Resources Department

NB the volumes for panel members, visitors, registration assessors and CPD assessors include some partners performing several roles

Panel members and visitors

Panel Members	2009			2010									2011									2008/9	09/10	10/11	10/11		
	Apr	May	Jun	Jul	Aug	Sep	Oct	Nov	Dec	Jan	Feb	Mar	Apr	May	Jun	Jul	Aug	Sep	Oct	Nov	Dec	Jan	Feb	Mar	FYE	FYE	YTD
Arts therapists	0	0	0	9	9	9	9	9	9	9	8	8	8	8	9	9	9	9	9	9	9	9	9	8	8	9	9
Biomedical scientists	18	18	18	14	14	14	14	14	14	14	14	14	13	13	13	12	12	12	12	12	12	12	12	18	14	12	14
Chirops & podiatrists	8	8	8	8	8	8	8	8	8	8	8	8	6	6	6	6	6	12	12	12	12	12	12	8	8	12	13
Clinical scientists	29	29	29	27	27	26	26	26	26	26	25	21	20	20	18	18	18	18	18	18	18	18	18	29	25	18	18
Dietitians	6	6	6	6	6	6	6	6	6	6	6	5	4	4	4	3	3	8	8	8	8	8	8	6	5	8	6
Hearing aid dispensers+	Not previously required												10	10	9	9	9	9	9	9	9	9	9			9	10
Occupational therapists	11	11	11	10	10	10	10	10	10	10	10	10	10	10	10	10	10	10	10	10	10	10	10	11	10	10	10
ODPs	12	12	12	11	10	10	10	10	10	10	10	10	9	9	9	8	8	8	8	8	8	8	8	12	10	8	15
Orthoptists	5	5	5	6	6	6	6	6	6	6	6	6	3	3	3	3	3	3	3	3	3	6	6	5	6	6	6
Paramedics	14	14	14	14	16	16	16	16	16	16	15	14	14	15	15	15	15	16	16	16	16	16	14	15	16	16	
Physiotherapists	28	28	28	29	29	27	27	27	27	27	27	25	25	25	25	25	25	25	25	25	25	25	28	27	25	27	
Practitioner psychologists	23	23	23	24	25	25	25	25	25	25	27	28	28	28	28	28	28	28	28	28	28	28			28	28	25
Prosthetists & orthotists	2	2	2	6	6	6	6	6	6	6	6	6	4	4	4	3	3	3	3	3	3	3	3	2	6	3	6
Radiographers	20	20	20	18	18	18	17	17	17	17	17	15	15	15	15	15	15	15	15	15	15	15	20	17	15	17	
SLTs	12	12	12	12	11	11	11	11	11	11	10	9	9	9	9	9	9	9	9	9	9	9	12	10	9	11	
Lay members	39	39	39	31	30	30	30	30	30	30	27	26	26	26	25	25	25	25	25	40	40	40	39	27	40	40	
Total	227	227	227	225	225	222	221	221	221	221	216	204	204	204	198	198	209	210	210	228	228	228	204	216	228	243	
Visitors	2009			2010									2011									FYE	FYE	YTD	Forecast		
Arts therapists	15	15	15	15	14	14	14	14	14	14	14	14	14	14	14	13	13	13	13	13	13	13	15	14	13	15	
Biomedical scientists	12	12	12	12	12	12	12	12	12	12	12	12	12	12	12	12	12	12	12	12	12	12	12	12	12	12	11
Chirops & podiatrists	11	11	11	10	9	9	9	9	9	9	9	9	9	9	9	9	11	11	11	10	9	9	11	9	9	10	
Clinical scientists	5	5	5	9	9	9	9	9	9	9	9	8	8	7	6	6	6	6	6	6	6	6	5	9	6	5	
Dietitians	5	5	5	8	8	8	8	8	8	8	8	8	8	8	7	6	6	9	9	9	9	9	5	8	9	9	
Hearing aid dispensers+	Not previously required												4	4	3	3	3	3	3	3	3	3	3			3	4
Occupational therapists	14	14	14	15	15	15	15	15	15	15	15	14	14	14	12	12	12	12	12	12	12	12	14	15	12	16	
ODPs	10	10	10	10	11	11	11	11	10	10	10	10	10	10	10	10	10	10	10	10	10	10	10	10	10	10	10
Orthoptists	6	6	6	5	5	5	5	5	5	5	5	4	4	4	4	4	4	4	4	4	4	4	6	5	4	2	
Paramedics	17	17	17	16	16	16	16	16	16	16	16	16	16	16	15	15	15	15	15	15	15	15	17	16	15	16	
Physiotherapists	16	16	16	14	13	13	13	13	13	13	13	13	13	13	13	13	13	13	13	13	13	13	16	13	13	15	
Practitioner psychologists	19	19	19	15	24	22	26	26	26	26	29	29	29	29	29	29	29	29	29	29	30	30			29	30	32
Prosthetists & orthotists	4	4	4	4	4	4	4	4	4	4	4	4	4	4	4	4	4	4	3	3	3	2	4	4	2	3	
Radiographers	17	17	17	16	16	16	16	16	16	16	16	16	16	16	15	15	15	15	15	15	15	15	17	16	15	13	
SLTs	11	11	11	10	10	10	10	10	10	10	10	10	10	10	9	9	9	9	9	9	9	9	11	10	9	10	
Lay members	4	4	4	4	4	4	4	4	4	4	4	4	4	4	4	4	4	4	4	4	4	4	4	4	4	4	4
Total	166	166	166	163	170	168	172	172	171	171	174	175	175	172	164	164	169	169	168	168	167	166	147	174	166	175	

+ Hearing aid dispensers section of register opened 1st April 2010



	2009			2010												2011			2008/9 FYE	09/10 FYE	10/11 YTD							
	Apr	May	Jun	Jul	Aug	Sep	Oct	Nov	Dec	Jan	Feb	Mar	Apr	May	Jun	Jul	Aug	Sep				Oct	Nov	Dec	Jan	Feb	Mar	
Panel members																												
PM new appointments	22	2	0	0	0	0	0	0	0	0	2	1	9	0	1	1	0	11	1	0	19	0	0	15	27	42		
Resignations/Terminations							3	1	0	0	0	1	7	21	1	1	7	0	0	0	0	1	0	0		43	31	
Total NumberTrained	242	242	242	225	224	221	220	220	220	221	222	216	204	204	204	198	198	204	205	210	225	225	225	219	216	225		
Awaiting training	20	22	22	1	1	1	1	1	1	0	0	0	0	0	0	0	0	5	5	0	3	3	3	21	0	3		
Visitors																												
VI new appointments	13	5	0	0	0	0	4	0	0	0	3	0	4	0	0	0	0	5	5	0	1	0	0	32	25	15		
Resignations/Terminations							2	0	0	1	0	0	3	0	3	8	0	0	0	1	1	1	1			3	18	
Total NumberTrained	157	157	157	163	160	158	158	158	157	168	171	171	172	172	169	161	161	161	161	160	159	164	163	138	171	159		
Awaiting training	20	25	25	10	10	10	14	14	14	3	3	3	3	3	3	3	3	8	8	8	9	3	3	26	3	9		
Registration assessors																												
RA new appointments	12	4	0	0	0	0	0	0	0	0	3	0	5	0	1	2	0	3	1	2	1	0	0	19	19	15		
Resignations/Terminations							2	0	1	1	0	0	4	2	5	7	1	0	0	0	2	0	0			5	21	
Total NumberTrained	211	211	211	174	173	171	171	170	169	168	170	169	170	168	164	161	160	163	164	166	164	164	164	193	169	164		
Awaiting training	7	11	11	0	1	1	1	1	1	1	2	2	2	2	2	0	0	0	0	0	1	1	1	14	2	1		
CPD assessors																												
CPD new appointments	8	0	0	0	17	0	0	0	9	0	12	0	5	1	0	0	0	0	0	0	0	0	0	4	46	6		
Resignations/Terminations							0	0	0	0	0	0	0	0	0	1	0	0	0	0	0	0	1	1			0	3
Total NumberTrained	31	37	37	37	37	52	52	52	52	65	77	77	81	82	82	81	81	82	82	82	82	81	81	25	77	81		
Awaiting training	2	2	2	2	4	4	4	4	13	0	0	0	1	1	1	1	1	0	0	0	0	0	0	1	0	0		
Legal Assessors																												
LA new appointments				0	0	0	0	0	0	0	0	0	0	11	0	0	0	0	0	0	0	0	0			0	11	
Resignations/Terminations							1	0	0	0	0	0	1	0	0	0	0	0	0	0	1	0	0			1	2	
Total NumberTrained				12	12	11	11	11	11	11	11	10	10	21	21	21	21	21	21	21	20	20	20			10	20	
Awaiting training				0	0	0	0	0	0	0	0	0	0	0	0	0	0	0	0	0	0	0	0			0	0	
Panel Chairs																												
Panel Chair new appointments				0	0	0	0	0	0	0	0	0	0	0	0	0	0	0	0	0	0	0	0			0	0	
Resignations/Terminations							0	0	1	0	0	0	0	0	0	0	0	0	0	0	0	0	0			0	0	
Total NumberTrained				19	19	19	20	19	19	19	19	19	19	19	19	19	19	19	19	19	19	19	19			19	19	
Awaiting training				0	0	0	0	0	0	0	0	0	0	0	0	0	0	0	0	0	0	0	0			0	0	