

## Human Resources, Partners – Kathryn Neuschafer

### **Recruitment**

Thirty-six applications were received for the Legal Assessor vacancies. Sixteen have been shortlisted for interviews the week commencing 8<sup>th</sup> March 2010.

Seventeen applications were received for the Registration Assessor Clinical Scientist – Clinical physiology vacancies. Five candidates have been shortlisted to fill the two vacancies.

The vacancies for CPD Assessors for Arts Therapy and Dietitians were recently filled.

### **Training**

Induction training was held for all new appointments in January. Fourteen Panel members were trained, eighteen Visitors and seven Registration Assessors.

Thirteen Physiotherapy CPD Assessors were trained.

### **Partner Assessment**

The self-assessment forms have been distributed to Panel Members and Panel Chairs in line with the partner agreement renewal process.

### **Partner Department**

Hanna Crease has commenced in the role as Partner Administrator to replace Marche Wilson who is seconded to Human Resources to cover Sam Ha who is on maternity leave.

### **Partner Resignations**

There were no resignations in January and one Panel Member for February.

Health Professions Council

Partner Breakdown Report April 2008 - March 2010

Human Resources Department

NB the volumes for panel members, visitors, registration assessors and CPD assessors include some partners performing several roles

Panel members and visitors

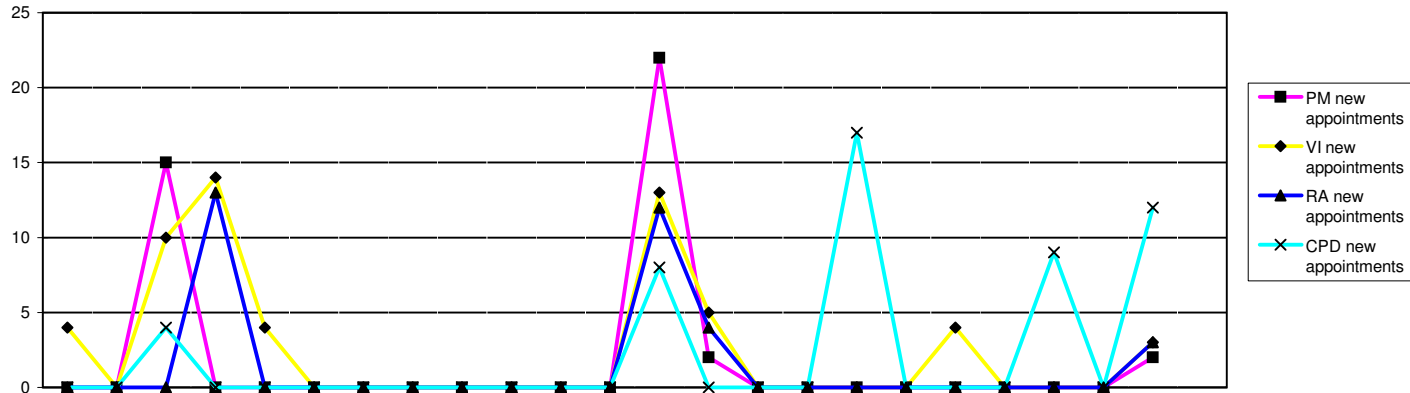
Panel Members	2008												2009												2010												2008/9	09/10	10/11
	Apr	May	Jun	Jul	Aug	Sep	Oct	Nov	Dec	Jan	Feb	Mar	Apr	May	Jun	Jul	Aug	Sep	Oct	Nov	Dec	Jan	Feb	Mar	Apr	May	Jun	Jul	Aug	Sep	Oct	Nov	Dec	Jan	Feb	Mar	FYE	YTD	Forecast
Arts therapists	5	5	5	5	5	5	2	2	2	0	0	0	0	0	0	9	9	9	9	9	9	9	8	0	0	0	9	9	9	9	9	9	9	8	0	8	9		
Biomedical scientists	18	18	18	18	18	18	18	18	18	18	18	18	18	18	18	14	14	14	14	14	14	14	14	18	18	18	14	14	14	14	14	14	14	14	18	14	14		
Chirops & podiatrists	9	9	9	9	9	9	9	9	9	9	8	8	8	8	8	8	8	8	8	8	8	8	8	8	8	8	8	8	8	8	8	8	8	8	8	8	13		
Clinical scientists	30	30	30	30	30	30	30	30	30	29	29	29	29	29	29	27	27	26	26	26	26	26	26	29	29	29	27	27	26	26	26	26	26	26	29	26	26		
Dietitians	6	6	6	6	6	6	6	6	6	6	6	6	6	6	6	6	6	6	6	6	6	6	6	6	6	6	6	6	6	6	6	6	6	6	6	6	6		
Hearing aid dispensers+	Not previously required												Not previously required														10												
Occupational therapists	8	8	8	11	11	11	11	11	11	11	11	11	11	11	11	10	10	10	10	10	10	10	10	11	11	11	10	10	10	10	10	10	10	10	11	10	10		
ODPs	10	10	10	12	12	12	12	12	12	12	12	12	12	12	12	11	10	10	10	10	10	10	10	12	12	12	11	10	10	10	10	10	10	10	12	10	15		
Orthoptists	6	6	6	6	6	6	5	5	5	5	5	5	5	5	5	6	6	6	6	6	6	6	6	5	5	5	6	6	6	6	6	6	6	6	5	6	6		
Paramedics	14	14	14	14	14	14	14	14	14	14	14	14	14	14	14	14	16	16	16	16	16	16	16	14	14	14	14	16	16	16	16	16	16	16	14	16	16		
Physiotherapists	32	32	32	32	32	32	31	31	31	29	28	28	28	28	28	29	29	27	27	27	27	27	27	28	28	28	29	29	27	27	27	27	27	27	28	27	27		
Practitioner psychologists	Not previously required												23	23	23	24	25	25	25	25	25	25	27	23	23	23	24	25	25	25	25	25	27		27	25			
Prosthetists & orthotists	3	3	3	5	5	5	4	4	4	3	2	2	2	2	2	6	6	6	6	6	6	6	6	2	2	2	6	6	6	6	6	6	6	6	2	6	6		
Radiographers	19	19	19	20	20	20	20	20	20	20	20	20	20	20	20	18	18	18	17	17	17	17	17	20	20	20	18	18	18	17	17	17	17	17	20	17	17		
SLTs	12	12	12	12	12	12	12	12	12	12	12	12	12	12	12	12	11	11	11	11	11	11	11	12	12	12	12	11	11	11	11	11	11	11	12	11	11		
Lay members	39	39	39	39	39	39	39	39	39	39	39	39	39	39	39	31	30	30	30	30	30	30	30	39	39	39	31	30	30	30	30	30	30	30	39	30	40		
<b>Total</b>	<b>211</b>	<b>211</b>	<b>211</b>	<b>219</b>	<b>219</b>	<b>219</b>	<b>213</b>	<b>213</b>	<b>213</b>	<b>207</b>	<b>204</b>	<b>204</b>	<b>227</b>	<b>227</b>	<b>227</b>	<b>225</b>	<b>225</b>	<b>222</b>	<b>221</b>	<b>221</b>	<b>221</b>	<b>222</b>	<b>204</b>	<b>222</b>	<b>251</b>														
<b>Visitors</b>																									<b>FYE</b>	<b>YTD</b>	<b>Forecast</b>												
Arts therapists	15	15	15	15	15	15	15	15	15	15	15	15	15	15	15	15	14	14	14	14	14	14	14	15	15	15	15	14	14	14	14	14	14	14	15	14	22		
Biomedical scientists	11	11	11	11	11	11	12	12	12	12	12	12	12	12	12	12	12	12	12	12	12	12	12	12	12	12	12	12	12	12	12	12	12	12	12	12	11		
Chirops & podiatrists	11	11	11	11	11	11	11	11	11	11	11	11	11	11	11	10	9	9	9	9	9	9	9	11	11	11	10	9	9	9	9	9	9	9	11	9	10		
Clinical scientists	6	6	6	6	6	6	5	5	5	5	5	5	5	5	5	9	9	9	9	9	9	9	9	5	5	5	9	9	9	9	9	9	9	9	5	9	5		
Dietitians	6	6	6	6	6	6	5	5	5	5	5	5	5	5	5	8	8	8	8	8	8	8	8	5	5	5	8	8	8	8	8	8	8	8	5	8	9		
Hearing aid dispensers+	Not previously required												Not previously required														4												
Occupational therapists	10	10	10	10	10	10	14	14	14	14	14	14	14	14	14	15	15	15	15	15	15	15	15	14	14	14	15	15	15	15	15	15	15	15	14	15	16		
ODPs	10	10	10	10	10	10	10	10	10	10	10	10	10	10	10	10	11	11	11	11	11	10	10	10	10	10	10	10	11	11	11	11	10	10	10	10	10	10	
Orthoptists	5	5	5	5	5	5	6	6	6	6	6	6	6	6	6	5	5	5	5	5	5	5	5	6	6	6	5	5	5	5	5	5	5	5	6	5	2		
Paramedics	14	14	14	14	14	14	17	17	17	17	17	17	17	17	17	16	16	16	16	16	16	16	16	17	17	17	16	16	16	16	16	16	16	16	17	16	16		
Physiotherapists	17	17	17	17	17	17	16	16	16	16	16	16	16	16	16	14	13	13	13	13	13	13	13	16	16	16	14	13	13	13	13	13	13	13	16	13	15		
Practitioner psychologists	Not previously required												19	19	19	15	24	22	26	26	26	26	29	19	19	19	15	24	22	26	26	26	26	29		29	32		
Prosthetists & orthotists	4	4	4	4	4	4	4	4	4	4	4	4	4	4	4	4	4	4	4	4	4	4	4	4	4	4	4	4	4	4	4	4	4	4	4	4	3		
Radiographers	17	17	17	17	17	17	17	17	17	17	17	17	17	17	17	16	16	16	16	16	16	16	16	17	17	17	16	16	16	16	16	16	16	16	17	16	13		
SLTs	10	10	10	10	10	10	11	11	11	11	11	11	11	11	11	10	10	10	10	10	10	10	10	11	11	11	10	10	10	10	10	10	10	10	11	10	10		
Lay members	4	4	4	4	4	4	4	4	4	4	4	4	4	4	4	4	4	4	4	4	4	4	4	4	4	4	4	4	4	4	4	4	4	4	4	4	4		
<b>Total</b>	<b>140</b>	<b>140</b>	<b>140</b>	<b>140</b>	<b>140</b>	<b>140</b>	<b>147</b>	<b>147</b>	<b>147</b>	<b>147</b>	<b>147</b>	<b>147</b>	<b>166</b>	<b>166</b>	<b>166</b>	<b>163</b>	<b>170</b>	<b>168</b>	<b>172</b>	<b>172</b>	<b>171</b>	<b>171</b>	<b>174</b>	<b>147</b>	<b>174</b>	<b>182</b>													

+ Hearing aid dispensers section of register will open 1st April 2010

Page 20 contd - Registration assessors and CPD assessors

Registration Assessors	2008												2009												2010												2008/9	09/10	10/11
	Apr	May	Jun	Jul	Aug	Sep	Oct	Nov	Dec	Jan	Feb	Mar	Apr	May	Jun	Jul	Aug	Sep	Oct	Nov	Dec	Jan	Feb	Mar	Apr	May	Jun	Jul	Aug	Sep	Oct	Nov	Dec	Jan	Feb	Mar	YTD	YTD	Forecast
Arts therapists	8	8	8	8	8	8	6	6	6	6	6	6	6	6	6	6	6	6	6	6	6	6	6	6	6	6	6	6	6	6	6	6	6	6	6	6	6		
Biomedical scientists	19	19	19	19	19	19	18	18	18	18	18	18	18	18	18	17	17	16	16	16	16	16	16	18	18	18	17	17	16	16	16	16	16	16	18	16	16		
Chirops & podiatrists	15	15	15	15	15	15	17	17	17	17	17	17	17	17	17	6	5	5	5	5	5	5	5	17	17	17	6	5	5	5	5	5	5	5	17	5	5		
Clinical scientists	43	43	43	43	43	43	25	25	25	25	25	25	25	25	25	23	24	23	23	23	23	23	23	25	25	25	23	24	23	23	23	23	23	23	25	23	25		
Dietitians	11	11	11	11	11	11	9	9	9	9	9	9	9	9	9	9	8	8	8	8	8	8	8	9	9	9	9	8	8	8	8	8	8	8	9	8	8		
Hearing aid dispensers+	Not previously required																										5												
Occupational therapists	13	13	13	13	13	13	12	12	12	12	12	12	12	12	12	11	11	11	11	11	11	11	11	12	12	12	11	11	11	11	11	11	11	11	12	11	11		
ODPs	5	5	5	5	5	5	4	4	4	4	4	4	4	4	4	4	4	4	4	4	4	4	4	4	4	4	4	4	4	4	4	4	4	4	4	4	4		
Orthoptists	6	6	6	6	6	6	6	6	6	6	6	6	6	6	6	6	6	6	6	5	5	5	5	6	6	6	6	6	6	5	5	5	5	5	6	5	5		
Paramedics	15	15	15	15	15	15	15	15	15	15	15	15	15	15	15	13	13	13	13	13	13	13	13	15	15	15	12	12	12	12	12	12	12	13	15	13	13		
Physiotherapists	25	25	25	25	25	25	25	25	25	25	25	25	25	25	25	22	22	22	22	22	22	22	22	25	25	25	22	22	22	22	22	22	22	22	25	22	22		
Practitioner psychologists	Not previously required																								18	18	25												
Prosthetists & orthotists	3	3	3	3	3	3	3	3	3	3	3	3	3	3	3	3	3	3	3	3	3	3	5	3	3	3	3	3	3	3	3	3	3	5	3	5	3		
Radiographers	20	20	20	20	20	20	17	17	17	17	17	17	17	17	17	17	17	17	17	17	16	16	16	17	17	17	17	17	17	17	16	16	16	16	17	16	16		
SLTs	14	14	14	14	14	14	12	12	12	12	12	12	12	12	12	12	12	12	12	12	12	12	12	12	12	12	12	12	12	12	12	12	12	12	12	12	12		
<b>Total</b>	197	197	197	197	197	197	169	169	169	169	169	169	187	187	187	174	173	171	171	170	169	169	172	169	172	176													
<b>CPD Assessors</b>																									<b>FYE</b>	<b>YTD</b>	<b>Forecast</b>												
Arts therapists	Not previously required																								0	0	2												
Biomedical scientists	Not previously required																								0	0	8												
Chirops & Podiatrists	0	14	14	14	14	14	13	13	13	13	13	13	13	13	13	13	13	13	13	13	13	13	13	13	13	13													
Clinical scientists	Not previously required																								0	0	2												
Dietitians	Not previously required																								0	0	3												
Hearing aid dispensers+	Not previously required																																						
Occupational therapists	Not previously required																								0	0	10												
ODPs	0	0	7	7	7	7	10	10	10	10	10	10	10	10	10	10	10	10	10	10	10	10	10	10	10	10													
Orthoptists	Not previously required																								1	1	2												
Paramedics	Not previously required																								6	6	6												
Physiotherapists	Not previously required																								0	0	12												
Practitioner psychologists	Not previously required																								0	0	0												
Prosthetists & orthotists	Not previously required																								0	0	2												
Radiographers	Not previously required																								0	0	9												
SLTs	Not previously required																								0	0	3												
<b>Total</b>	14	21	21	21	21	23	23	23	23	23	23	23	30	30	30	37	56	56	56	56	65	65	77	23	77	82													
<b>Legal Assessors</b>	Not previously reported																										19												
<b>Panel Chair</b>	Not previously reported																										19												

+ Hearing aid dispensers section of register will open 1st April 2010



	2008			2009												2010			2008/9 FYE	09/10 YTD										
	Apr	May	Jun	Jul	Aug	Sep	Oct	Nov	Dec	Jan	Feb	Mar	Apr	May	Jun	Jul	Aug	Sep			Oct	Nov	Dec	Jan	Feb	Mar				
<b>Panel members</b>																														
PM new appointments	0	0	15	0	0	0	0	0	0	0	0	0	22	2	0	0	0	0	0	0	0	0	0	2	15	26				
Resignations/Terminations	Not previously reported																				3	1	0	0	0	1		5		
Total NumberTrained	211	211	211	219	219	219	219	219	219	219	219	219	242	242	242	225	224	221	220	220	220	221	222	219	222					
Awaiting training	16	16	31	21	21	21	21	21	21	21	21	21	20	22	22	1	1	1	1	1	1	0	0	21	0					
<b>Visitors</b>																														
VI new appointments	4	0	10	14	4	0	0	0	0	0	0	0	13	5	0	0	0	0	4	0	0	0	3	32	25					
Resignations/Terminations	Not previously reported																				2	0	0	1	0	0		3		
Total NumberTrained	123	123	123	123	138	138	138	138	138	138	138	138	157	157	157	163	160	158	158	158	157	168	171	138	171					
Awaiting training	9	9	19	37	26	26	26	26	26	26	26	26	20	25	25	10	10	10	14	14	14	3	3	26	3					
<b>Registration assessors</b>																														
RA new appointments	0	0	0	13	0	0	0	0	0	0	0	0	12	4	0	0	0	0	0	0	0	0	3	13	19					
Resignations/Terminations	Not previously reported																				2	0	1	1	0	0		4		
Total NumberTrained	193	193	193	193	193	193	193	193	193	193	193	193	211	211	211	174	173	171	171	170	168	168	171	193	171					
Awaiting training	1	1	1	14	14	14	14	14	14	14	14	14	7	11	11	0	1	1	1	1	1	1	2	14	2					
<b>CPD assessors</b>																														
CPD new appointments	0	0	4	0	0	0	0	0	0	0	0	0	8	0	0	0	17	0	0	0	9	0	12	4	46					
Resignations/Terminations	Not previously reported																				0	0	0	0	0	0		0		
Total NumberTrained	0	0	21	21	21	21	25	25	25	25	25	25	31	37	37	37	37	52	52	52	52	65	77	25	77					
Awaiting training	22	22	5	5	5	5	1	1	1	1	1	1	2	2	2	2	4	4	4	4	13	0	0	1	0					
<b>Legal Assessors</b>																														
LA new appointments	Not previously reported																				0	0	0	0	0	0	0	0		0
Resignations/Terminations	Not previously reported																						1	0	0	0	0	0		1
Total NumberTrained	Not previously reported																				12	12	11	11	11	11	11	11		11
Awaiting training	Not previously reported																				0	0	0	0	0	0	0	0		0
<b>Panel Chairs</b>																														
Panel Chair new appointments	Not previously reported																				0	0	0	0	0	0	0	0		0
Resignations/Terminations	Not previously reported																						0	0	1	0	0	0		1
Total NumberTrained	Not previously reported																				19	19	20	19	19	19	19	19		19
Awaiting training	Not previously reported																				0	0	0	0	0	0	0	0		0