

Human Resources, Partners – Kathryn Neuschafer

Recruitment

All of the partner vacancies were filled in the recent recruitment for chiropody/podiatry and dietetic professions. Five panel members, two registration assessors and three visitors were recruited for Dietetics and six panel members and two Visitors for Chiropody/Podiatry.

There were no applications received for the Orthoptist panel member vacancies following the advertisement in the British and Irish Orthoptic Society monthly newsletter. A second round has been scheduled for later in the year to fill the three vacancies.

Training

Psychology Registration Assessors are scheduled to attend a refresher training session on 15 July 2010.

New panel member training is scheduled for 28 and 29 July 2010 and new Registration Assessor training for 28 July 2010.

Partner Agreement

There has been a good response with returning the Partner Agreements. Ninety-two percent have returned their agreements prior to the expiry date of 31 July 2010.

Partner Resignations

One Panel Member, five Registration Assessors and two Visitors resigned in June.

Partner Appraisals

Both the Visitor appraisal and Registration Assessor appraisal are being rolled out. Panel member appraisals are scheduled to resume in August 2010 following the completion of the self assessment process.

Partner Number Forecast

The number of Arts Therapists Visitors has been re-forecast from 22 to 15 following a review of the number of programs and Visitor requirements.

Health Professions Council

Partner Breakdown Report April 2009 - March 2011

Human Resources Department

NB the volumes for panel members, visitors, registration assessors and CPD assessors include some partners performing several roles

Panel members and visitors

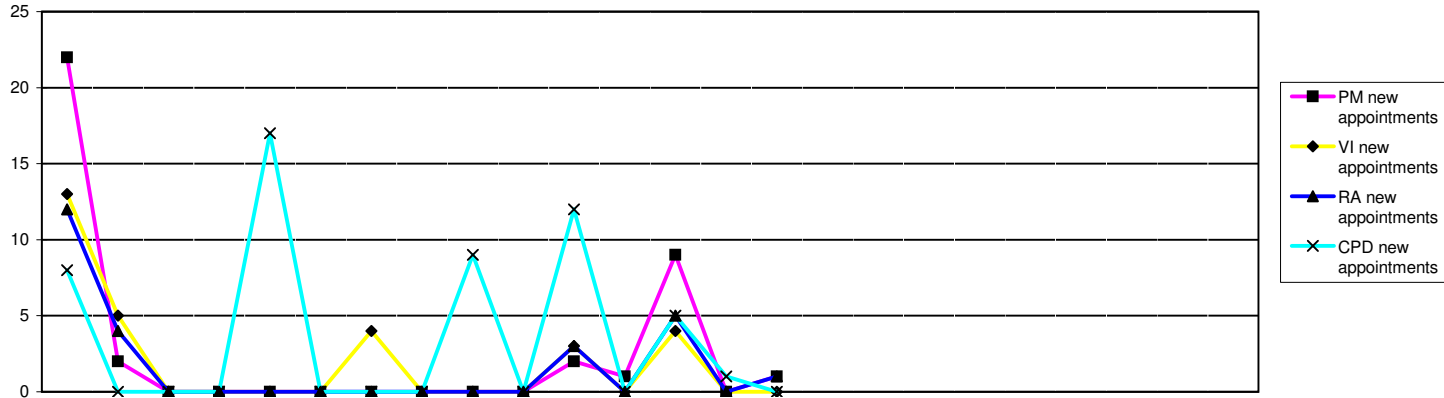
Panel Members	2009			2010												2011												2008/9	09/10	10/11	10/11
	Apr	May	Jun	Jul	Aug	Sep	Oct	Nov	Dec	Jan	Feb	Mar	Apr	May	Jun	Jul	Aug	Sep	Oct	Nov	Dec	Jan	Feb	Mar	FYE	FYE	YTD	Forecast			
Arts therapists	0	0	0	9	9	9	9	9	9	9	8	8	8	8	8										0	8	8	9			
Biomedical scientists	18	18	18	14	14	14	14	14	14	14	14	14	13	13	13										18	14	13	14			
Chirops & podiatrists	8	8	8	8	8	8	8	8	8	8	8	8	6	6	6										8	8	6	13			
Clinical scientists	29	29	29	27	27	26	26	26	26	26	25	21	20	20										29	25	20	26				
Dietitians	6	6	6	6	6	6	6	6	6	6	5	4	4	4										6	5	4	6				
Hearing aid dispensers+	Not previously required												10	10	9												9	10			
Occupational therapists	11	11	11	10	10	10	10	10	10	10	10	10	10	10										11	10	10	10				
ODPs	12	12	12	11	10	10	10	10	10	10	10	9	9	9										12	10	9	15				
Orthoptists	5	5	5	6	6	6	6	6	6	6	6	3	3	3										5	6	3	6				
Paramedics	14	14	14	14	16	16	16	16	16	16	15	14	14	15										14	15	15	16				
Physiotherapists	28	28	28	29	29	27	27	27	27	27	27	25	25	25										28	27	25	27				
Practitioner psychologists	23	23	23	24	25	25	25	25	25	25	27	28	28	28	28											28	28	25			
Prosthetists & orthotists	2	2	2	6	6	6	6	6	6	6	6	4	4	4										2	6	4	6				
Radiographers	20	20	20	18	18	18	17	17	17	17	17	15	15	15										20	17	15	17				
SLTs	12	12	12	12	11	11	11	11	11	11	10	9	9	9										12	10	9	11				
Lay members	39	39	39	31	30	30	30	30	30	30	27	26	26	26										39	27	26	40				
Total	227	227	227	225	225	222	221	221	221	221	222	216	204	204	204									204	216	204	251				
Visitors																								FYE	FYE	YTD	Forecast				
Arts therapists	15	15	15	15	14	14	14	14	14	14	14	14	14	14										15	14	14	15				
Biomedical scientists	12	12	12	12	12	12	12	12	12	12	12	12	12	12										12	12	12	11				
Chirops & podiatrists	11	11	11	10	9	9	9	9	9	9	9	9	9	9										11	9	9	10				
Clinical scientists	5	5	5	9	9	9	9	9	9	9	9	8	8	7										5	9	7	5				
Dietitians	5	5	5	8	8	8	8	8	8	8	8	8	8	7										5	8	7	9				
Hearing aid dispensers+	Not previously required												4	4	3												3	4			
Occupational therapists	14	14	14	15	15	15	15	15	15	15	15	14	14	14										14	15	14	16				
ODPs	10	10	10	10	11	11	11	11	10	10	10	10	10	10										10	10	10	10				
Orthoptists	6	6	6	5	5	5	5	5	5	5	5	4	4	4										6	5	4	2				
Paramedics	17	17	17	16	16	16	16	16	16	16	16	16	16	16										17	16	16	16				
Physiotherapists	16	16	16	14	13	13	13	13	13	13	13	13	13	13										16	13	13	15				
Practitioner psychologists	19	19	19	15	24	22	26	26	26	26	29	29	29	29	29										29	29	32				
Prosthetists & orthotists	4	4	4	4	4	4	4	4	4	4	4	4	4	4										4	4	4	3				
Radiographers	17	17	17	16	16	16	16	16	16	16	16	16	16	16										17	16	16	13				
SLTs	11	11	11	10	10	10	10	10	10	10	10	10	10	10										11	10	10	10				
Lay members	4	4	4	4	4	4	4	4	4	4	4	4	4	4										4	4	4	4				
Total	166	166	166	163	170	168	172	172	171	171	174	174	175	175	172									147	174	172	175				

+ Hearing aid dispensers section of register opened 1st April 2010

Page 10 contd - Registration assessors and CPD assessors

Registration Assessors	2009			2010									2011									2008/9	09/10	10/11	10/11				
	Apr	May	Jun	Jul	Aug	Sep	Oct	Nov	Dec	Jan	Feb	Mar	Apr	May	Jun	Jul	Aug	Sep	Oct	Nov	Dec	Jan	Feb	Mar	FYE	FYE	YTD	Forecast	
Arts therapists	6	6	6	6	6	6	6	6	6	6	6	6	6	6	6	6	6	6	6	6	6	6	6	6	6	6	6	6	
Biomedical scientists	18	18	18	17	17	16	16	16	16	16	16	16	16	16	16										18	16	16	16	
Chirops & podiatrists	17	17	17	6	5	5	5	5	5	5	5	5	5	5	5	5	5	5	5	5	5	5	5	5	5	5	5	5	
Clinical scientists	25	25	25	23	24	23	23	23	23	23	23	23	22	22	20										25	23	20	25	
Dietitians	9	9	9	9	8	8	8	8	8	8	8	8	7	7	7										9	7	7	8	
Hearing aid dispensers+	Not previously required												5	5	4													4	5
Occupational therapists	12	12	12	11	11	11	11	11	11	11	11	11	10	10	10										12	11	10	11	
ODPs	4	4	4	4	4	4	4	4	4	4	4	4	4	4	4										4	4	4	4	
Orthoptists	6	6	6	6	6	6	6	5	5	5	5	5	5	5	5										6	5	5	5	
Paramedics	15	15	15	13	13	13	13	13	13	13	13	13	12	12	11										15	13	11	13	
Physiotherapists	25	25	25	22	22	22	22	22	22	22	22	22	21	21	21										25	22	21	22	
Practitioner psychologists	18	18	18	25	25	25	25	25	25	25	26	26	26	24	24											26	24	25	
Prosthetists & orthotists	3	3	3	3	3	3	3	3	3	3	5	5	5	5	5										3	5	5	3	
Radiographers	17	17	17	17	17	17	17	17	16	16	16	16	16	16	16										17	16	16	16	
SLTs	12	12	12	12	12	12	12	12	12	12	12	12	12	12	12										12	12	12	12	
Total	187	187	187	174	173	171	171	170	169	169	172	171	172	170	166										169	171	166	176	
CPD Assessors																						FYE	FYE	YTD	Forecast				
Arts therapists	0	0	0	0	0	0	0	0	0	0	0	0	2	3	3											0	3	2	
Biomedical scientists	0	0	0	1	8	8	8	8	8	8	8	8	8	8	8											13	13	13	
Chirops & Podiatrists	13	13	13	13	13	13	13	13	13	13	13	13	13	13	13														
Clinical scientists	0	0	0	0	2	2	2	2	2	2	2	2	2	2	2											2	2	2	
Dietitians	0	0	0	0	0	0	0	0	0	0	0	0	3	3	3											0	3	3	
Hearing aid dispensers+	Not previously required												Not required																
Occupational therapists	0	0	0	5	10	10	10	10	10	10	10	10	10	10	10											10	10	10	
ODPs	10	10	10	10	10	10	10	10	10	10	10	10	10	10	10											10	10	10	
Orthoptists	1	1	1	2	2	2	2	2	2	2	2	2	2	2	2											2	2	2	
Paramedics	6	6	6	6	6	6	6	6	6	6	6	6	6	6	6											6	6	6	
Physiotherapists	0	0	0	0	0	0	0	0	0	0	12	12	12	12	12											12	12	12	
Practitioner psychologists	0	0	0	0	0	0	0	0	0	0	0	0	0	0	0											0	0	0	
Prosthetists & orthotists	0	0	0	0	2	2	2	2	2	2	2	2	2	2	2											2	2	2	
Radiographers	0	0	0	0	0	0	0	0	9	9	9	9	9	9	9											9	9	9	
SLTs	0	0	0	0	3	3	3	3	3	3	3	3	3	3	3											3	3	3	
Total	30	30	30	37	56	56	56	56	65	65	77	77	82	83	83										23	77	83	82	
Legal Assessors				12	12	11	11	11	11	11	11	10	10	21	21												10	21	19
Panel Chair				19	19	19	20	19	19	19	19	19	19	19	19												19	19	19
Total Partner Numbers																								Total YTD	Total Forecast				
																										543	667	665	722

+ Hearing aid dispensers section of register opened 1st April 2010



	2009			2010												2011			2008/9 FYE	09/10 FYE	10/11 YTD							
	Apr	May	Jun	Jul	Aug	Sep	Oct	Nov	Dec	Jan	Feb	Mar	Apr	May	Jun	Jul	Aug	Sep				Oct	Nov	Dec	Jan	Feb	Mar	
Panel members																												
PM new appointments	22	2	0	0	0	0	0	0	0	0	0	2	1	9	0	1							15	27	10			
Resignations/Terminations													21	1	1								35	23				
Total NumberTrained	242	242	242	225	224	221	220	220	220	221	222	216	204	204	204							219	216	204				
Awaiting training	20	22	22	1	1	1	1	1	1	0	0	0	0	0	0	0							21	0	0			
Visitors																												
VI new appointments	13	5	0	0	0	0	4	0	0	0	3	0	4	0	0							32	25	4				
Resignations/Terminations													3	0	3								3	6				
Total NumberTrained	157	157	157	163	160	158	158	158	157	168	171	171	172	172	169							138	171	169				
Awaiting training	20	25	25	10	10	10	14	14	14	3	3	3	3	3	3							26	3	3				
Registration assessors																												
RA new appointments	12	4	0	0	0	0	0	0	0	0	3	0	5	0	1							19	19	6				
Resignations/Terminations													4	2	5								5	11				
Total NumberTrained	211	211	211	174	173	171	171	170	169	168	170	169	170	168	164							193	169	164				
Awaiting training	7	11	11	0	1	1	1	1	1	1	2	2	2	2	2							14	2	2				
CPD assessors																												
CPD new appointments	8	0	0	0	17	0	0	0	9	0	12	0	5	1	0							4	46	0				
Resignations/Terminations													0	0	0								0	0				
Total NumberTrained	31	37	37	37	37	52	52	52	52	65	77	77	81	82	82							25	77	82				
Awaiting training	2	2	2	2	4	4	4	4	13	0	0	0	1	1	1							1	0	1				
Legal Assessors																												
LA new appointments				0	0	0	0	0	0	0	0	0	0	11	0								0	0				
Resignations/Terminations													1	0	0								1	0				
Total NumberTrained				12	12	11	11	11	11	11	11	10	10	21	21								10	21				
Awaiting training				0	0	0	0	0	0	0	0	0	0	0	0								0	0				
Panel Chairs																												
Panel Chair new appointments				0	0	0	0	0	0	0	0	0	0	0	0								0	0				
Resignations/Terminations													0	0	1	0	0	0	0								0	0
Total NumberTrained				19	19	19	20	19	19	19	19	19	19	19	19								19	19				
Awaiting training				0	0	0	0	0	0	0	0	0	0	0	0								0	0				