

Human Resources, Partners – Kathryn Neuschafer

Recruitment

The full compliment of Continuing Professional Development (CPD) Assessors required for the following professions were recruited; two Clinical Scientists, two Prosthetists and Orthotist, three Speech and Language Therapists, eight Biomedical Scientists and nine Occupational Therapists.

Training

Panel Member refresher training has been completed. Sixty-seven panel members completed refresher training this year.

Registration Assessor refresher training has been completed. One hundred and twenty-two Registration Assessors underwent refresher training this year.

CPD Assessors for the following professions are being trained during June and July; Clinical Scientists, Prosthetists and Orthotists, Speech and Language Therapists and Biomedical Scientists.

Appraisals

Partner appraisals are currently being processed for Panel Chair and Panel Member.

Partner Systems

Investigations are currently in progress to record multiple professional modalities in the partner database and to generate reports with this data.

Department Update

Kathryn Neuschafer has returned from Maternity leave and Deborah Dawkins who had been Acting Partner Manager is staying in the Partner department on an extended secondment as Partner Co-ordinator.

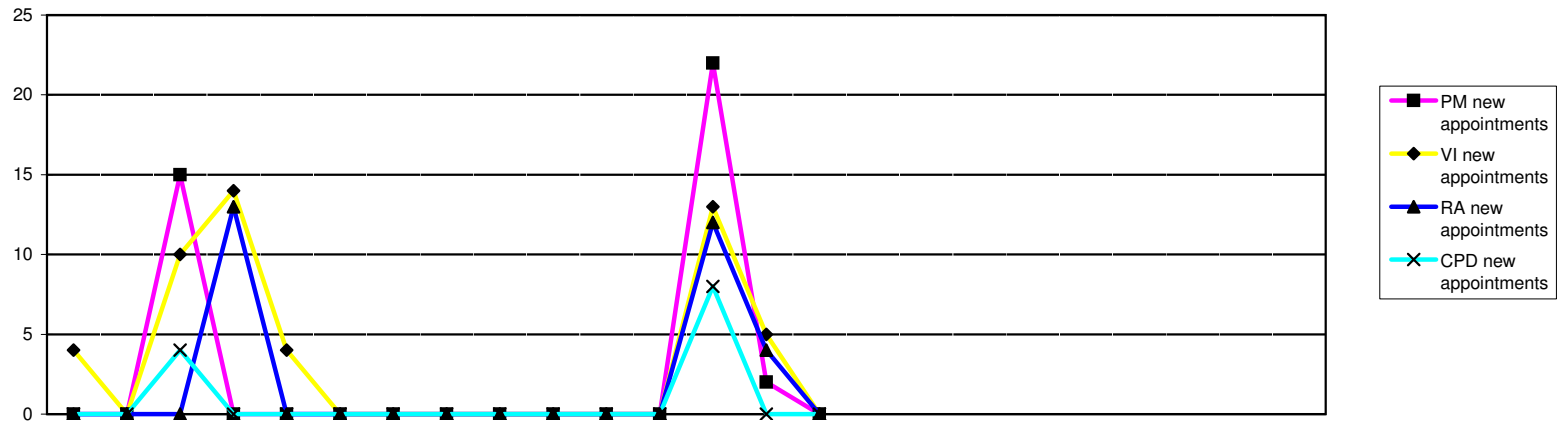
NB the volumes for panel members, visitors, registration assessors and CPD assessors include some partners performing several roles

Panel members and visitors

Panel members	2008			2009									2010									2005/6	2006/7	2007/8	2008/9	09/10			
	Apr	May	Jun	Jul	Aug	Sep	Oct	Nov	Dec	Jan	Feb	Mar	Apr	May	Jun	Jul	Aug	Sep	Oct	Nov	Dec	Jan	Feb	Mar	FYE	FYE	FYE	FYE	YTD
Arts therapists	5	5	5	5	5	5	2	2	2	0	0	0	0	0	0										7	7	5	0	0
Biomedical scientists	18	18	18	18	18	18	18	18	18	18	18	18	18	18	18										25	24	18	18	18
Chirops & podiatrists	9	9	9	9	9	9	9	9	9	9	8	8	8	8	8									11	11	9	8	8	
Clinical scientists	30	30	30	30	30	30	30	30	30	29	29	29	29	29	29									46	44	30	29	29	
Dietitians	6	6	6	6	6	6	6	6	6	6	6	6	6	6	6									13	13	6	6	6	
Occupational therapists	8	8	8	11	11	11	11	11	11	11	11	11	11	11	11									12	12	8	11	11	
ODPs	10	10	10	12	12	12	12	12	12	12	12	12	12	12	12									10	10	10	12	12	
Orthoptists	6	6	6	6	6	6	5	5	5	5	5	5	5	5	5									4	5	6	5	5	
Paramedics	14	14	14	14	14	14	14	14	14	14	14	14	14	14	14									16	16	14	14	14	
Physiotherapists	32	32	32	32	32	32	31	31	31	29	28	28	28	28	28									37	37	32	28	28	
Practitioner psychologists													23	23	23													23	
Prosthetists & orthotists	3	3	3	5	5	5	4	4	4	3	2	2	2	2	2									3	3	3	2	2	
Radiographers	19	19	19	20	20	20	20	20	20	20	20	20	20	20	20									20	20	19	20	20	
SLTs	12	12	12	12	12	12	12	12	12	12	12	12	12	12	12									13	13	12	12	12	
Lay members	39	39	39	39	39	39	39	39	39	39	39	39	39	39	39									79	78	39	39	39	
Total	211	211	211	219	219	219	213	213	213	207	204	204	227	227	227									296	293	211	204	227	
Visitors																								FYE	FYE	FYE	FYE	YTD	
Arts therapists	15	15	15	15	15	15	15	15	15	15	15	15	15	15	15									21	22	13	15	15	
Biomedical scientists	11	11	11	11	11	11	12	12	12	12	12	12	12	12	12									11	13	11	12	12	
Chirops & podiatrists	11	11	11	11	11	11	11	11	11	11	11	11	11	11	11									19	20	10	11	11	
Clinical scientists	6	6	6	6	6	6	5	5	5	5	5	5	5	5	5									12	13	6	5	5	
Dietitians	6	6	6	6	6	6	5	5	5	5	5	5	5	5	5									8	9	6	5	5	
Occupational therapists	10	10	10	10	10	10	14	14	14	14	14	14	14	14	14									18	21	10	14	14	
ODPs	10	10	10	10	10	10	10	10	10	10	10	10	10	10	10									11	11	10	10	10	
Orthoptists	5	5	5	5	5	5	6	6	6	6	6	6	6	6	6									6	7	5	6	6	
Paramedics	14	14	14	14	14	14	17	17	17	17	17	17	17	17	17									20	20	14	17	17	
Physiotherapists	17	17	17	17	17	17	16	16	16	16	16	16	16	16	16									17	20	17	16	16	
Practitioner psychologists													19	19	19													19	
Prosthetists & orthotists	4	4	4	4	4	4	4	4	4	4	4	4	4	4	4									2	1	3	4	4	
Radiographers	17	17	17	17	17	17	17	17	17	17	17	17	17	17	17									29	20	17	17	17	
SLTs	10	10	10	10	10	10	11	11	11	11	11	11	11	11	11									16	16	10	11	11	
Lay members	4	4	4	4	4	4	4	4	4	4	4	4	4	4	4									12	18	4	4	4	
Total	140	140	140	140	140	140	147	147	147	147	147	147	166	166	166									123	211	136	147	166	

Page 20 contd - Registration assessors and CPD assessors

Registration assessors	2008			2009									2010									2005/6	2006/7	2007/8	2008/9	09/10								
	Apr	May	Jun	Jul	Aug	Sep	Oct	Nov	Dec	Jan	Feb	Mar	Apr	May	Jun	Jul	Aug	Sep	Oct	Nov	Dec	Jan	Feb	Mar	FYE	FYE	FYE	YTD	YTD					
Arts therapists	8	8	8	8	8	8	6	6	6	6	6	6	6	6	6										8	8	8	6	6					
Biomedical scientists	19	19	19	19	19	19	18	18	18	18	18	18	18	18	18										19	19	19	18	18					
Chirops & podiatrists	15	15	15	15	15	15	17	17	17	17	17	17	17	17	17										15	15	15	17	17					
Clinical scientists	43	43	43	43	43	43	25	25	25	25	25	25	25	25	25										44	43	43	25	25					
Dietitians	11	11	11	11	11	11	9	9	9	9	9	9	9	9	9										11	11	11	9	9					
Occupational therapists	13	13	13	13	13	13	12	12	12	12	12	12	12	12	12										13	13	13	12	12					
ODPs	5	5	5	5	5	5	4	4	4	4	4	4	4	4	4										5	5	5	4	4					
Orthoptists	6	6	6	6	6	6	6	6	6	6	6	6	6	6	6										5	6	6	6	6					
Paramedics	15	15	15	15	15	15	15	15	15	15	15	15	15	15	15										15	15	15	15	15					
Physiotherapists	25	25	25	25	25	25	25	25	25	25	25	25	25	25	25										24	25	25	25	25					
Practitioner psychologists																18	18	18											18					
Prosthetists & orthotists	3	3	3	3	3	3	3	3	3	3	3	3	3	3	3										3	3	3	3	3					
Radiographers	20	20	20	20	20	20	17	17	17	17	17	17	17	17	17										20	20	20	17	17					
SLTs	14	14	14	14	14	14	12	12	12	12	12	12	12	12	12										14	14	14	12	12					
Total	197	197	197	197	197	197	169	169	169	169	169	169	169	169	187	187	187								196	197	197	169	187					
CPD assessors																									FYE	FYE	FYE	FYE	YTD					
Arts therapists							Not previously required									0	0	0														0		
Biomedical scientists							Not previously required									0	0	0																0
Chirops & Podiatrists	0	14	14	14	14	14	13	13	13	13	13	13	13	13	13													0	13	13				
Clinical scientists							Not previously required									0	0	0															0	
Dietitians							Not previously required									0	0	0																0
Occupational therapists							Not previously required									0	0	0																0
ODPs	0	0	7	7	7	7	10	10	10	10	10	10	10	10	10													0	10	10				
Orthoptists							Not previously required									1	1	1															1	
Paramedics							Not previously required									6	6	6																6
Physiotherapists							Not previously required									0	0	0																0
Practitioner psychologists							Not previously required									0	0	0																0
Prosthetists & orthotists							Not previously required									0	0	0																0
Radiographers							Not previously required									0	0	0																0
SLTs							Not previously required									0	0	0																0
Total			14	21	21	21	21	23	23	23	23	23	23	23	23	30	30	30										0	23	30				



	2008			2009									2010			2005/6	2006/7	2007/8	2008/9	2009/10														
	Apr	May	Jun	Jul	Aug	Sep	Oct	Nov	Dec	Jan	Feb	Mar	Apr	May	Jun	Jul	Aug	Sep	Oct	Nov	Dec	Jan	Feb	Mar	FYE	FYE	FYE	FYE	YTD					
Panel members																																		
PM new appointments	0	0	15	0	0	0	0	0	0	0	0	0	22	2	0														0	0	7	15	24	
Trained	211	211	211	219	219	219	219	219	219	219	219	219	242	242	242															296	293	211	219	242
Awaiting training	16	16	31	21	21	21	21	21	21	21	21	21	20	22	22															15	23	16	21	20
Visitors																																		
VI new appointments	4	0	10	14	4	0	0	0	0	0	0	0	13	5	0															0	0	13	32	18
Trained	123	123	123	123	138	138	138	138	138	138	138	138	157	157	157															202	223	123	138	157
Awaiting training	9	9	19	37	26	26	26	26	26	26	26	26	20	25	25															88	80	13	26	20
Registration assessors																																		
RA new appointments	0	0	0	13	0	0	0	0	0	0	0	0	12	4	0															0	0	1	13	16
Trained	193	193	193	193	193	193	193	193	193	193	193	193	211	211	211															196	197	193	193	211
Awaiting training	1	1	1	14	14	14	14	14	14	14	14	14	7	11	11															24	23	1	14	7
CPD assessors																																		
CPD new appointments	0	0	4	0	0	0	0	0	0	0	0	0	8	0	0																	22	4	8
Trained	0	0	21	21	21	21	25	25	25	25	25	25	31	37	37																	0	25	31
Awaiting training	22	22	5	5	5	5	1	1	1	1	1	1	2	2	2																	23	1	2