

STUDIO CALLAGHAN SHALL HAVE NO RESPONSIBILITY FOR ANY USE MADE OF THIS DOCUMENT OTHER THAN FOR THAT WHICH IT WAS PREPARED AND ISSUED

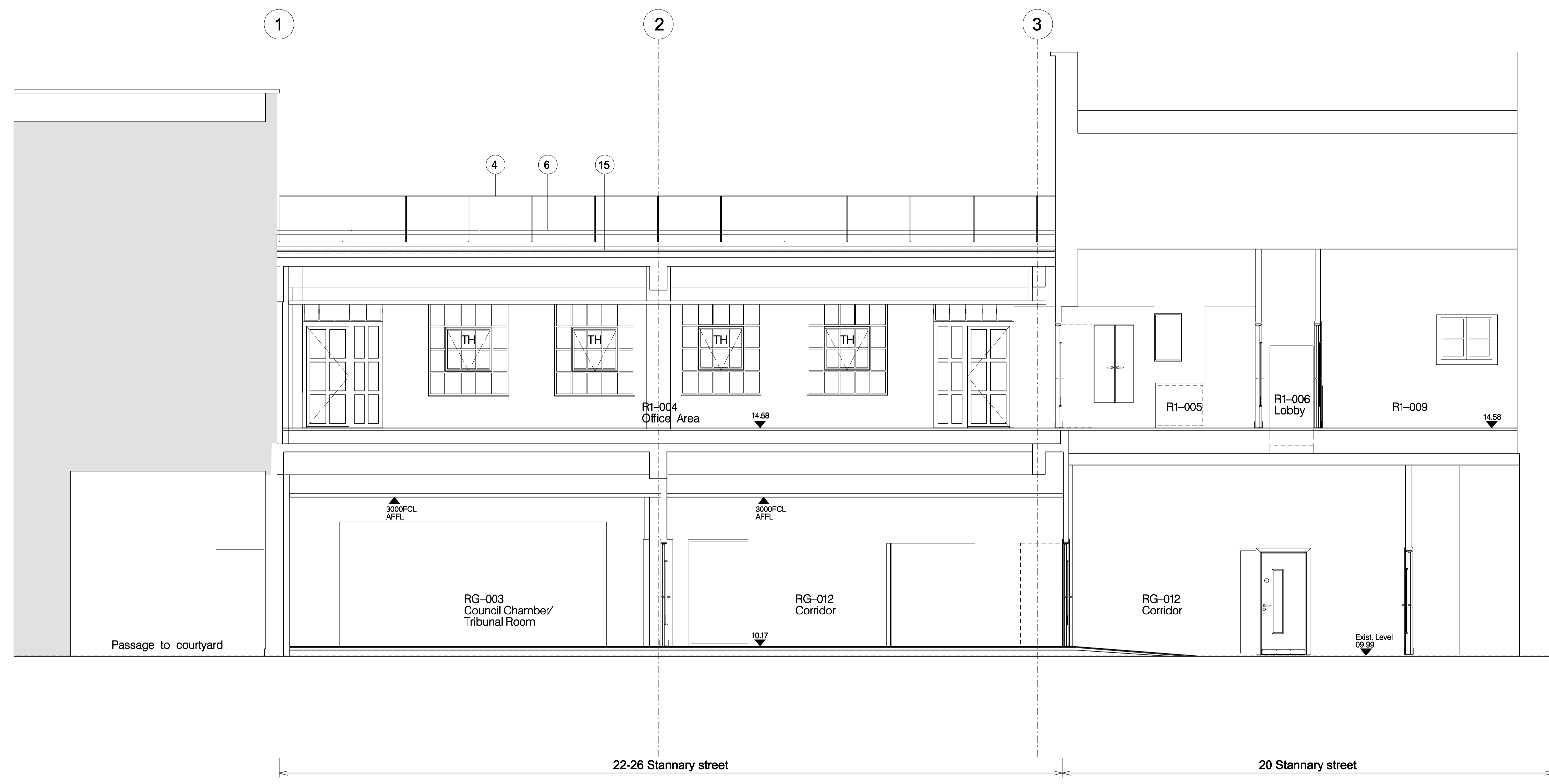
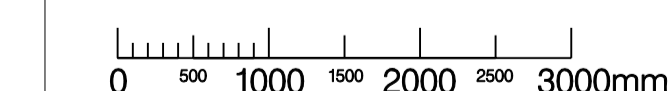
ALL DIMENSIONS SHOULD BE CHECKED ON SITE.

ANY DRAWING ERRORS OR DIVERGENCES SHOULD BE BROUGHT TO THE ATTENTION OF STUDIO CALLAGHAN AT THE ADDRESS SHOWN BELOW.

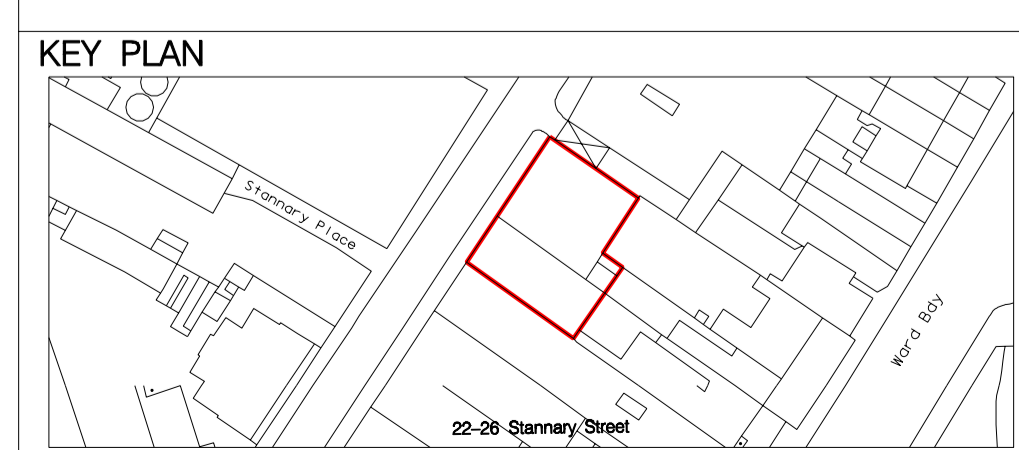
NOTES

TH - TOP HUNG

- (W) Double glazed W20 mild steel window powder coated mid grey with new precast concrete cill to match existing
- (W1) Double glazed W20 mild steel window powder coated mid grey with existing cill repaired where necessary
- (D) Mild steel door powder coated mid grey
- (1) Screen to shield plant units
- (2) Plant area comprising 5 no. outside units and 2 no. intake/extract grilles
- (3) Rainwater collector from roof above for watering terrace plants
- (4) Mild Steel Handrail
- (5) Air intake/extract grille
- (6) New coping to match existing
- (7) Cast Iron SVP Painted Black
- (8) Cast Iron RWP Painted Black
- (9) Stainless Steel Flue
- (10) Existing RWP
- (11) SS Side Screen Gate
- (12) SS Side Screen
- (13) Paving or Decking to terrace
- (14) Double glazed window with softwood frame painted white
- (15) Bituminous felt roof covering
- (16) Solar shade mild steel painted mid grey
- (17) Planted screen comprising SS cables spanning between SS angles
- (18) Glazed sliding entrance door
- (19) Glazed entrance canopy on mild steel supports powder coated mid grey
- (20) Existing coping level
- (21) Brick infill to parapet to match existing
- (22) Bituminous felt covering to temporary lift shaft cover
- (23) Timber external door painted white
- (24) Tree to match species in Stannary Street
- (25) Existing gantry
- (26) Existing timber door painted grey
- (27) Ventilation brick
- (28) Recessed luminaires fluorescent lamp



Detail 01
Section FF existing



A /the opening at WC revised; levels amended from Rowman Craven survey; R2-005, R1-006 and R1-007 revised; railing removed	191206
B /Door by grid 1 added; Notes added for planning; notes added for planning	120107
C /Scale added, scale note removed, updated for planning	280107
D /new ceiling added, scale bar amended	120207

REVISION /DESCRIPTION	DRAWN	CHECKED	DATE	REVISION /DESCRIPTION	DRAWN	CHECKED	DATE	REVISION /DESCRIPTION	DRAWN	CHECKED	DATE

CLIENT
Health Professions Council

studio callaghan
Architects, Designers
141 Kennington Park Road
London SE11 4JJ
Tel +44 (0)20 7820 3657
Fax +44 (0)20 7820 9877
Email caricallaghan@btinternet.com
www.studiocalaghan.co.uk

PROJECT TITLE 22-26 Stannary Street	
STATUS Planning	
DRAWING TITLE Section FF Proposed Phase 1	
PROJECT NUMBER SC78	DRAWING NO. 078S251
SCALE @ A1 1:50	DATE JAN 2008
REVISION D	