

**Agenda Item 10**

**Enclosure 8**

**Health and Care Professions Council  
22 September 2016**

**Education report**

**To note**

**From Abigail Gorringe, Director of Education**

Council, 22 September 2016

Education Report

Executive summary and recommendations

**Introduction**

The report sets out the main activities of the Education Department in July and August 2016. It includes statistical information and highlights key work undertaken.

Particular attention is drawn to –

- The operational workload in the 2015-16 academic year;
- The range of stakeholder meetings;
- The update on the major project; and
- Resources (employee).

**Decision**

The Council is invited to note the report.

**Background information**

None.

**Resource implications**

The resources for the Department are set out in the annual work plans and budgets.

**Financial implications**

The costs associated with all activities are set out in the budgets.

**Appendices**

Education management information pack.



# **Education Department**

# **Management Information Pack**

Abigail Gorringe  
Director of Education

September 2016

**Table of contents**

Section 1: Management commentary

Section 2: Management statistics

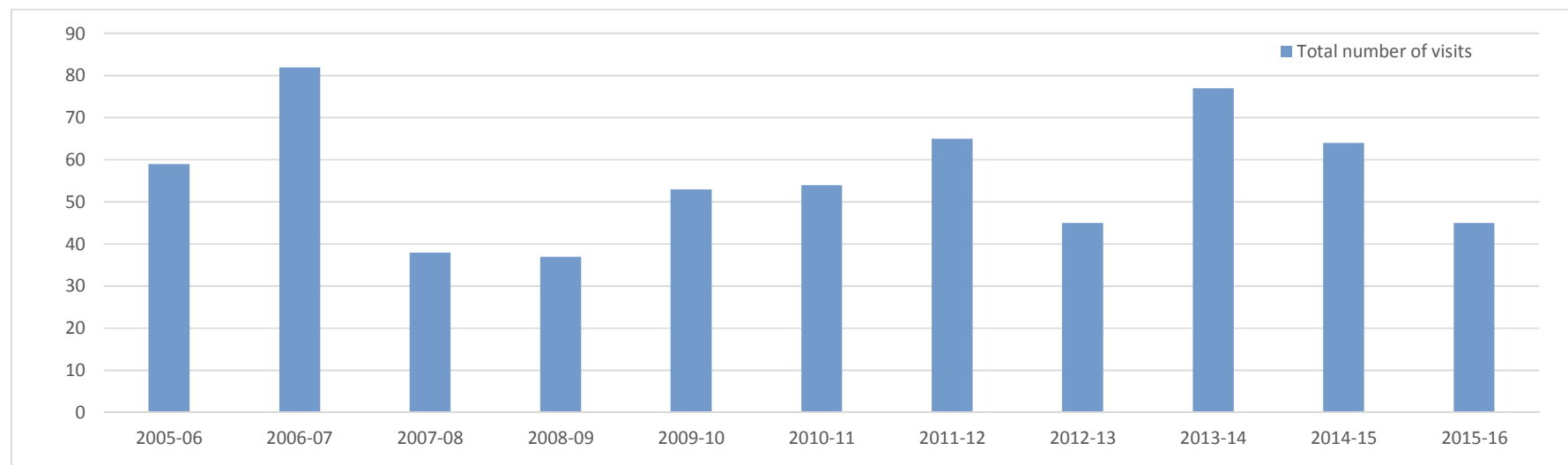
1. Number of approved programmes, by profession, April 2015 – March 2017
2. Overview of approval visits, April 2015 – March 2017
3. Reasons for approval visits, April 2015 – March 2017
4. Overview of annual monitoring submissions, April 2015 – March 2017
5. Overview of major change submissions, April 2015 – March 2017
6. Overview of concerns about approved programmes, April 2015 – March 2017
7. Overview of department workload, April 2015 – March 2017

## 1 Management commentary

### Approval process

The visit workload from the 2015-16 academic year is now complete. In total, there were 45 visits in the 2015-16 academic year, which is 30% less than the previous academic year. The mix of professions was higher than in previous years, with paramedics accounting for 40% of programmed visited and social workers just 24%. The workload whilst lower than in previous years, was more complex, unpredictable and less profession/silo based. The number of programmes considered at each visit was the lowest it has been for 10 years (1.3) and the number of cancellations at the highest it has been in five years (14 cases). The number and percentage of re-visits (11%) was higher than in previous years too. There is a substantial amount of post visit work still outstanding, with a number of cases continuing into the new (16-17) academic year.

The diagram below shows the visit numbers for the last ten years.



There are now 29 new approval cases scheduled within the new academic year, 2016-17. There are also three re-visits from approval cases from the previous academic year. In total, there are 29 planned visits. At this stage, the profession profile for new cases is even more mixed than 2015-16, with paramedic and social worker programmes no longer dominating the schedule. The top four professions are – paramedics (17%), occupational therapists (14%), social workers (14%) and practitioner psychologists (10%). The reason for programmes being visited is more evenly distributed than 2015-16, with less of a focus on new programmes. 53% of programmes to be visited are proposed new programmes and 47% of programmes are already approved and the visits

triggered by either major change or annual monitoring. Approximately 40% of the new cases are HCPC only visits, with 60% being joint events with the professional body and/or the education provider undertaking quality assurance activities at the same time. Given the six month notice period that is required, we are only scheduling visits to new programmes from April 2017 now.

### **Annual monitoring process**

The workload from the 2015-16 academic year is now complete. One programme has been referred to the approvals process as a result of the process. Preparations have begun to plan and communicate the requirements in the new academic year, 2016-17. This will be the busiest year for the process to date, as all programmes will be engaging with the last group of social worker and approved mental health professional programmes interacting for the first time.

### **Major change process**

The workload from the 2015-16 academic year continues to progress well. In total, there were 290 notification cases (covering approx. 500 programmes) received in the 2015-16 academic year, which is 21% more than the previous academic year. The conversion rate to full submission was 75%, which was approximately 10% higher than the previous academic year. The number and nature of notifications continue to be difficult to forecast accurately with monthly variations and much diversity in terms of reasons / professions involved. Despite the numbers being higher than anticipated, the average time taken to consider a complete case has remained under three months.

### **Concerns process**

The Department has received two new concerns in July & August 2016. As of 31 August 2016, there were two active concerns; one at the initial enquiry stage and one at documentation submission stage.

See section 2 for more statistical information on the above operational processes.

### **Liaison with stakeholders**

Members of the Department met with the following stakeholders and/or attended the following events in July, August & September 2016:

- Quality Assurance Agency: Quality Assurance and the Regulatory Landscape (England & Wales focus)
- Degree Apprenticeships : Understanding the opportunities (England & Wales focus)
- Ministry of Health, Malaysia
- Health Education England
- Interprofessional education seminar at Cardiff University
- British and Irish Orthoptic Society (Education Committee)

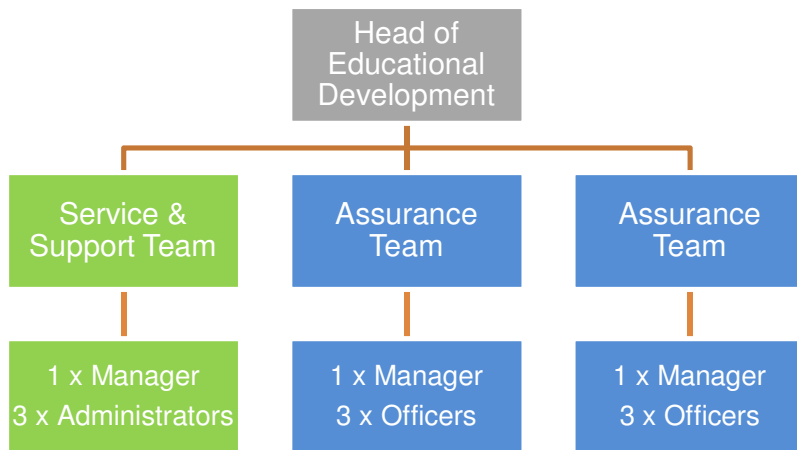
**Systems**

The final phase of the Education systems build major project is virtually complete. Integration work with Netregulate and the website went live in early September and formal project closure is due in late October 2016.

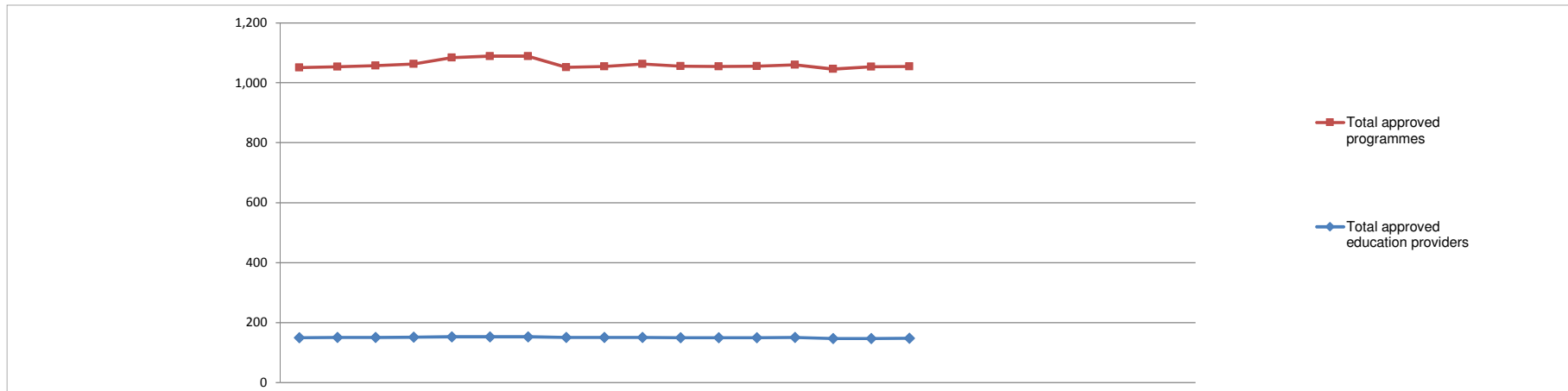
**Employees**

Paula Lescott (Head of Education Systems and Quality) returned from maternity leave on 28 July 2016 and has phased back into work over August and September 2016. Tamara Wayslec joined as Education Officer in August 2016. Tamara is a fixed term contract, to cover Amal Hussein, who is going on sabbatical in October 2016 for ten months. Recruitment for a temporary PA (maternity leave cover) and a permanent Education Officer (to replace Hollie Latham) is on-going.

Following a consultation with employees, the team structure within the operations function of the department has changed. The new structure is based around three operational teams, with one focused on service and support and two focused on quality assurance. This allows for a greater degree of specialisation and clearer focus within each team, as previously teams delivered a mixture of quality assessment, assurance, administrative support, service, scheduling and logistics.



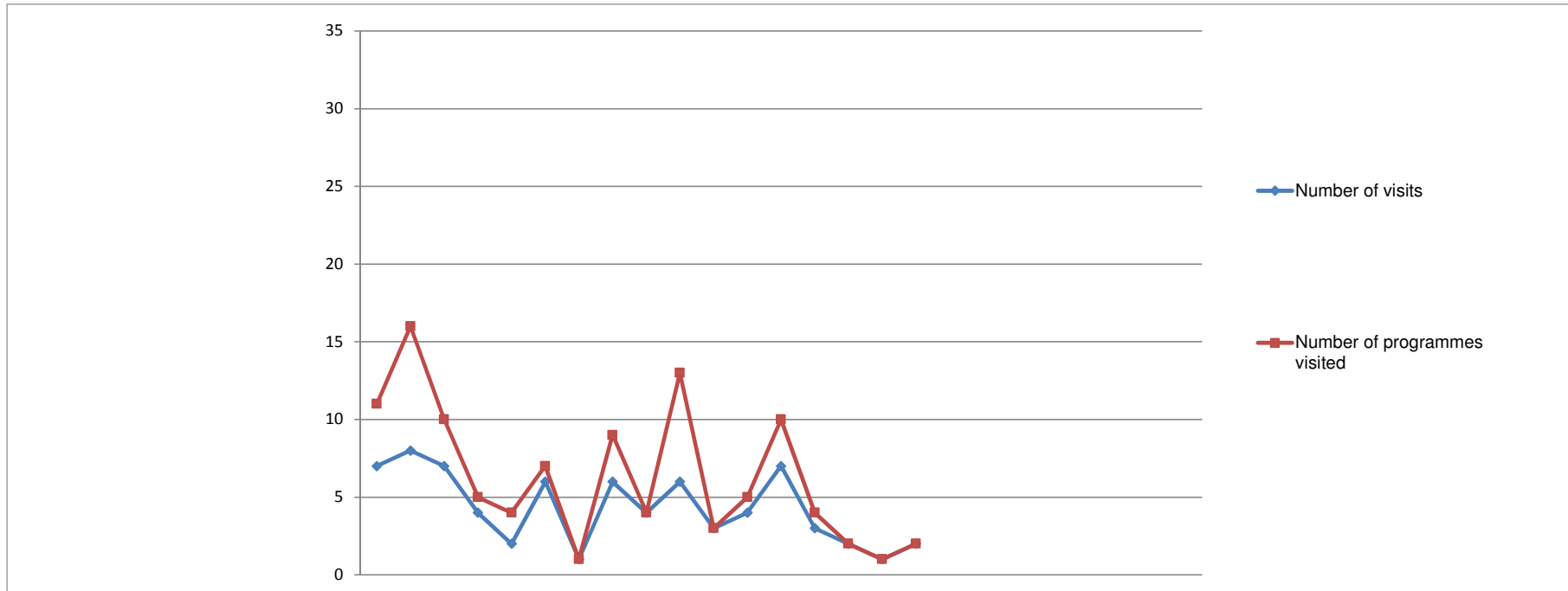
Number of approved programmes, by profession April 2015 - March 2017



Profession/entitlement	2015												2016												2017												2011/12 FYE	2012/13 FYE	2013/14 FYE	2014/15 FYE	2015/16 FYE	2016/17 YTD
	Apr	May	Jun	Jul	Aug	Sep	Oct	Nov	Dec	Jan	Feb	Mar	Apr	May	Jun	Jul	Aug	Sep	Oct	Nov	Dec	Jan	Feb	Mar	Apr	May	Jun	Jul	Aug	Sep	Oct	Nov	Dec	Jan	Feb	Mar						
Arts therapists	33	33	33	32	33	33	33	31	31	31	31	31	31	31	30	30	29							21	29	30	28	31	29													
Biomedical scientists	63	63	63	63	65	65	65	61	61	65	65	65	20	20	20	20	19							49	60	57	55	65	62													
Chiropractors/ Podiatrists	21	21	21	21	23	23	23	20	20	20	20	20	20	20	20	20	19						20	18	17	16	20	19														
Clinical scientists	3	3	3	3	3	3	3	3	3	3	3	3	3	3	3	3	3						1	3	3	3	3	3														
Dietitians	32	32	32	32	32	32	32	32	32	32	32	32	32	32	32	32	32						33	32	32	32	32	32														
Hearing aid dispensers	23	22	22	23	23	23	23	22	22	22	22	22	22	22	22	20	20						18	15	18	20	22	20														
Occupational therapists	73	73	71	73	73	73	73	70	70	70	70	70	70	70	71	71	70						74	73	70	69	70	70														
Operating Department Practitioners	40	40	40	40	42	42	42	37	38	38	38	38	38	38	37	37	38						34	35	34	34	38	38														
Orthoptists	3	3	3	3	3	3	3	3	3	3	3	3	3	3	3	3	3						3	3	3	3	3	3														
Paramedics	62	64	67	67	72	75	75	72	72	76	74	77	77	77	75	76	77						50	50	49	53	77	77														
Physiotherapists	70	69	68	70	70	71	71	70	70	70	70	71	71	70	70	70	71						67	65	69	69	71	71														
Practitioner psychologists	96	96	96	96	97	99	99	102	102	102	102	102	102	103	101	101	101						95	91	91	93	102	101														
Prosthetists/Orthotists	3	3	3	3	3	3	3	3	3	3	3	2	2	2	2	2	2						3	3	3	3	2	2														
Radiographers	52	52	52	52	52	52	52	50	50	50	50	51	52	53	52	52	54						56	53	51	50	51	54														
Social workers in England	248	249	250	250	256	255	255	241	243	245	243	242	242	243	242	250	251																									
Speech and language therapists	35	36	36	36	36	36	36	34	34	34	34	34	34	34	34	34	34						32	31	30	31	34	34														
Local anaesthesia	4	4	4	4	4	4	4	4	4	4	4	4	4	4	4	4	4						2	4	4	4	4	4	4	4	4	4	4	4	4	4	4					
Prescription only medicine	9	9	9	9	9	9	9	9	9	8	8	8	8	8	8	7	7	7					9	9	10	9	8	7														
Supplementary prescribing	59	59	58	59	59	59	59	59	59	59	56	53	53	52	52	52	52						77	77	62	59	53	52														
Independent prescribing	89	90	90	91	93	93	93	95	95	94	94	93	93	94	94	94	94									86	89	93	94													
Approved mental health professionals	33	33	36	36	36	36	36	34	34	34	34	34	34	36	32	32	32									27	26	26	34	32												
Podiatric surgery																																										
<b>Total approved programmes</b>	<b>1,051</b>	<b>1,054</b>	<b>1,057</b>	<b>1,063</b>	<b>1,084</b>	<b>1,089</b>	<b>1,089</b>	<b>1,052</b>	<b>1,055</b>	<b>1,063</b>	<b>1,056</b>	<b>1,055</b>	<b>1,056</b>	<b>1,060</b>	<b>1,046</b>	<b>1,054</b>	<b>1,055</b>							<b>644</b>	<b>909</b>	<b>968</b>	<b>967</b>	<b>1,055</b>	<b>1055</b>													
<b>Total approved education providers</b>	<b>150</b>	<b>151</b>	<b>151</b>	<b>152</b>	<b>153</b>	<b>153</b>	<b>153</b>	<b>151</b>	<b>151</b>	<b>151</b>	<b>150</b>	<b>150</b>	<b>150</b>	<b>151</b>	<b>147</b>	<b>147</b>	<b>148</b>						<b>128</b>	<b>150</b>	<b>151</b>	<b>143</b>	<b>150</b>	<b>148</b>														

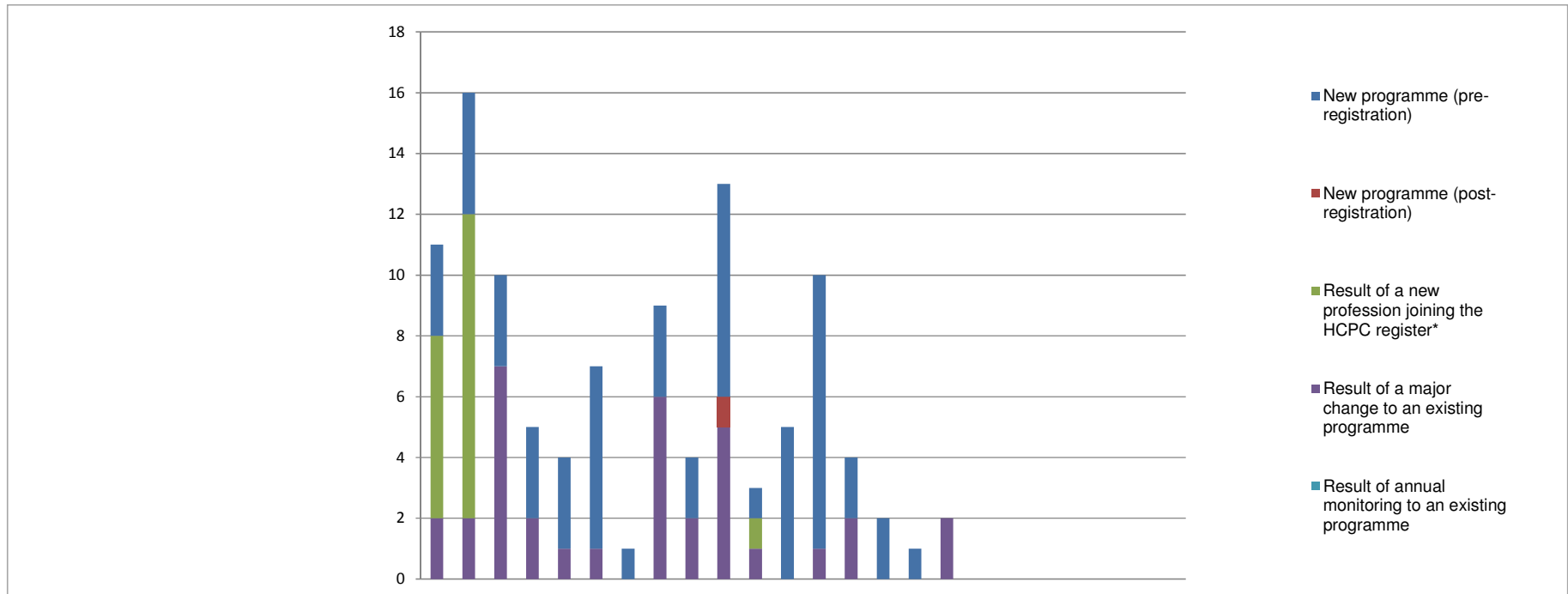


Overview of approval visits April 2015 - March 2017



Overview of approval visits	2015			2016												2017						2011/12	2012/13	2013/14	2014/15	2015/16	2016/17			
	Apr	May	Jun	Jul	Aug	Sep	Oct	Nov	Dec	Jan	Feb	Mar	Apr	May	Jun	Jul	Aug	Sep	Oct	Nov	Dec	Jan	Feb	Mar	FYE	FYE	FYE	FYE	FYE	YTD
Number of visits	7	8	7	4	2	6	1	6	4	6	3	4	7	3	2	1	2								59	56	66	69	58	15
Number of programmes visited	11	16	10	5	4	7	1	9	4	13	3	5	10	4	2	1	2								112	103	170	132	88	19

Reasons for approval visits April 2015 - March 2017

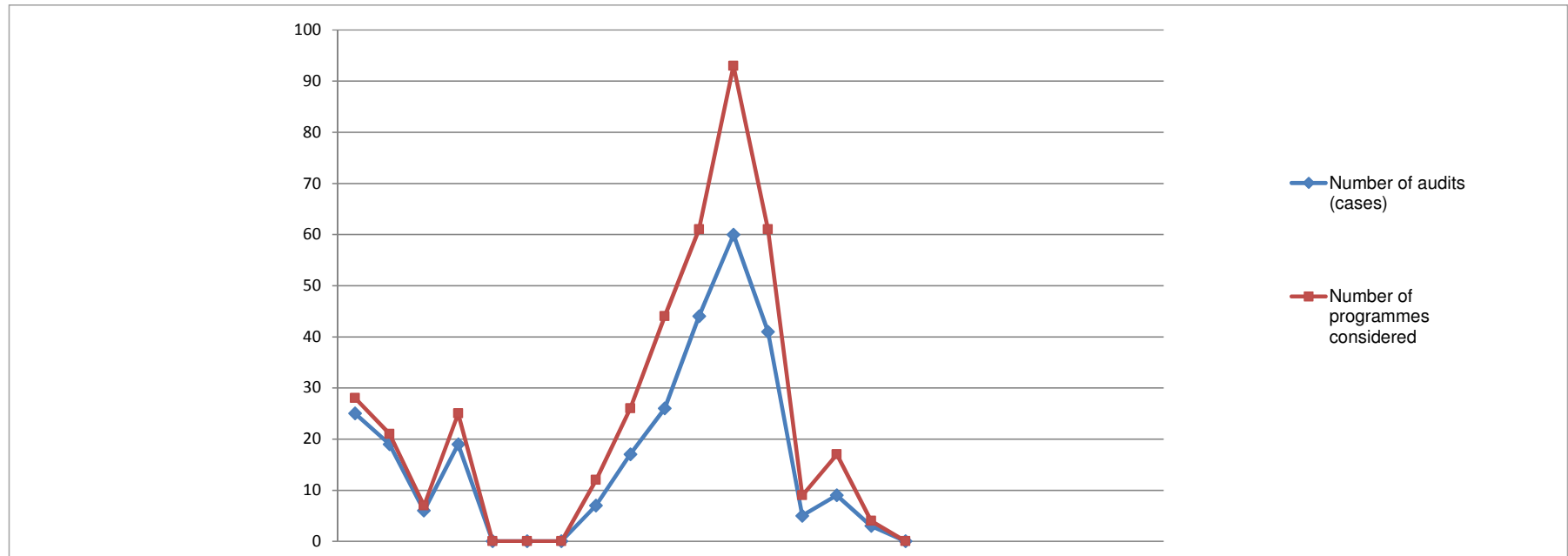


Reason for programme visited	2015												2016												2017											
	Apr	May	Jun	Jul	Aug	Sep	Oct	Nov	Dec	Jan	Feb	Mar	Apr	May	Jun	Jul	Aug	Sep	Oct	Nov	Dec	Jan	Feb	Mar	Apr	May	Jun	Jul	Aug	Sep	Oct	Nov	Dec	Jan	Feb	Mar
New programme (pre-registration)	3	4	3	3	3	6	1	3	2	7	1	5	9	2	2	1	0								9	2	2	1	0							
New programme (post-registration)	0	0	0	0	0	0	0	0	0	1	0	0	0	0	0	0	0								0	0	0	0	0							
Result of a new profession joining the HCPC register*	6	10	0	0	0	0	0	0	0	0	1	0	0	0	0	0	0								0	0	0	0	0							
Result of a major change to an existing programme	2	2	7	2	1	1	0	6	2	5	1	0	1	2	0	0	2								1	2	0	0	2							
Result of annual monitoring to an existing programme	0	0	0	0	0	0	0	0	0	0	0	0	0	0	0	0	0								0	0	0	0	0							
<b>Total</b>	<b>11</b>	<b>16</b>	<b>10</b>	<b>5</b>	<b>4</b>	<b>7</b>	<b>1</b>	<b>9</b>	<b>4</b>	<b>13</b>	<b>3</b>	<b>5</b>	<b>10</b>	<b>4</b>	<b>2</b>	<b>1</b>	<b>2</b>								<b>10</b>	<b>4</b>	<b>2</b>	<b>1</b>	<b>2</b>							

2011/12	2012/13	2013/14	2014/15	2015/16	2016/17
FYE	FYE	FYE	FYE	FYE	YTD
17	30	29	37	41	14
2	1	1	2	1	0
34	51	125	77	17	0
57	21	15	16	29	5
2	0	0	0	0	0
<b>112</b>	<b>103</b>	<b>170</b>	<b>132</b>	<b>88</b>	<b>19</b>

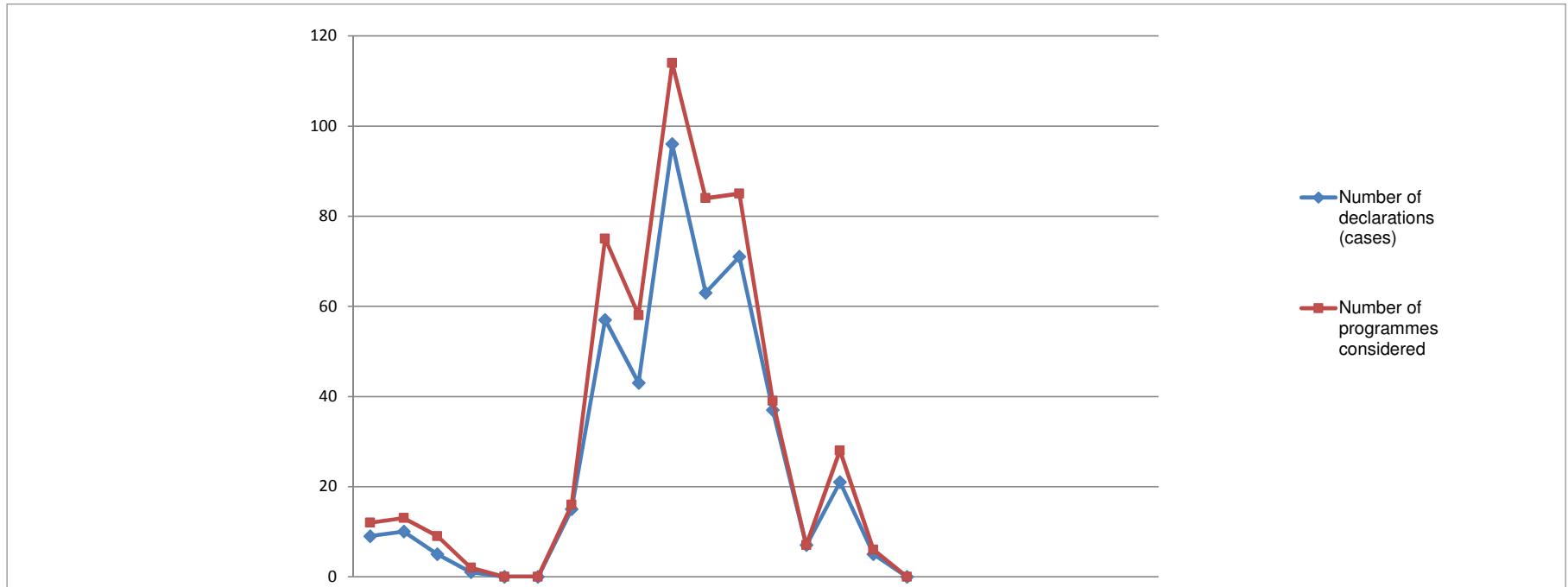
\* Practitioner psychologists July 2009 - July 2012  
 Hearing Aid Dispensers April 2010 - July 2012  
 Social workers in England August 2012 - July 2015  
 Approved mental health workers September 2013 - July 2015

Overview of annual monitoring audit submissions, April 2015 - March 2017



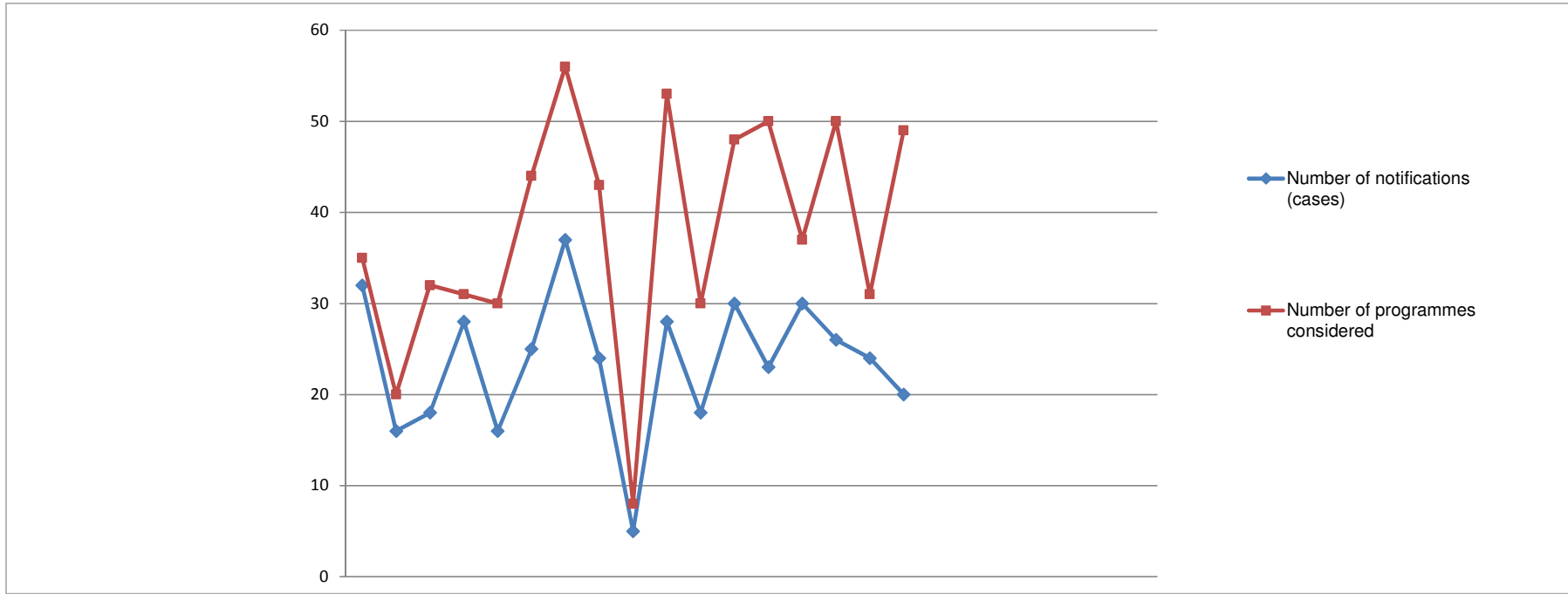
Type of submission	2015			2016									2017						2011/12	2012/13	2013/14	2014/15	2015/16	2016/17						
	Apr	May	Jun	Jul	Aug	Sep	Oct	Nov	Dec	Jan	Feb	Mar	Apr	May	Jun	Jul	Aug	Sep	Oct	Nov	Dec	Jan	Feb	Mar	FYE	FYE	FYE	FYE	FYE	YTD
Number of audits (cases)	25	19	6	19	0	0	0	7	17	26	44	60	41	5	9	3	0								163	199	222	209	223	58
Number of programmes considered	28	21	7	25	0	0	0	12	26	44	61	93	61	9	17	4	0								206	282	268	286	317	91

Overview of annual monitoring declarations, April 2015 - March 2017

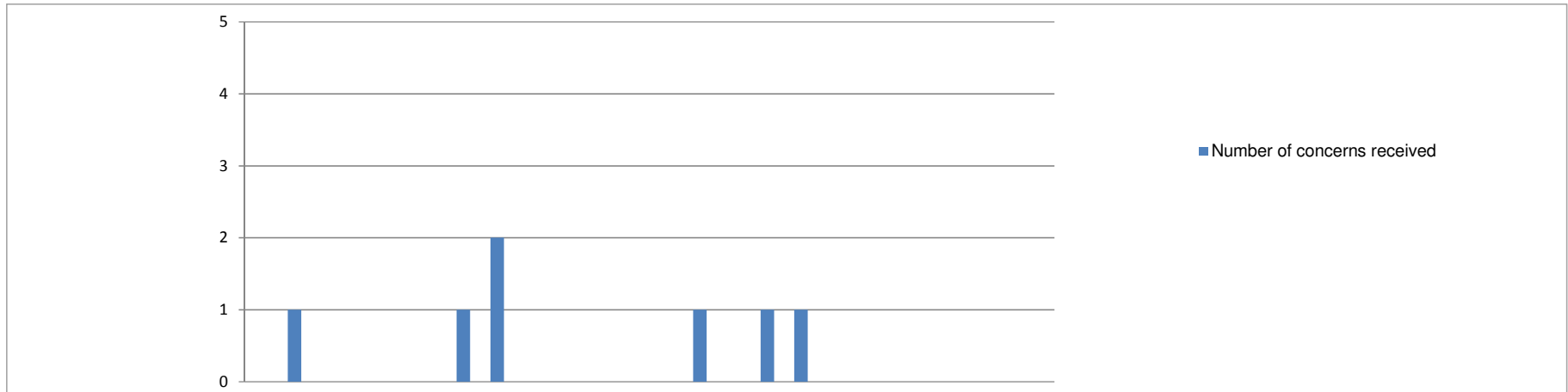


Type of submission	2015			2016									2017					2011/12	2012/13	2013/14	2014/15	2015/16	2016/17							
	Apr	May	Jun	Jul	Aug	Sep	Oct	Nov	Dec	Jan	Feb	Mar	Apr	May	Jun	Jul	Aug	Sep	Oct	Nov	Dec	Jan	Feb	Mar	FYE	FYE	FYE	FYE	FYE	YTD
Number of declarations (cases)	9	10	5	1	0	0	15	57	43	96	63	71	37	7	21	5	0								232	199	222	231	370	70
Number of programmes considered	12	13	9	2	0	0	16	75	58	114	84	85	39	7	28	6	0								249	267	297	316	468	80

Overview of major change submissions, April 2015 - March 2017



Overview of notifications	2015			2016									2017						2011/12	2012/13	2013/14	2014/15	2015/16	2016/17							
	Apr	May	Jun	Jul	Aug	Sep	Oct	Nov	Dec	Jan	Feb	Mar	Apr	May	Jun	Jul	Aug	Sep	Oct	Nov	Dec	Jan	Feb	Mar	FYE	FYE	FYE	FYE	FYE	YTD	
Number of notifications (cases)	32	16	18	28	16	25	37	24	5	28	18	30	23	30	26	24	20														
Number of programmes considered	35	20	32	31	30	44	56	43	8	53	30	48	50	37	50	31	49														
																									174	146	157	200	277	123	
																									311	266	250	398	430	217	



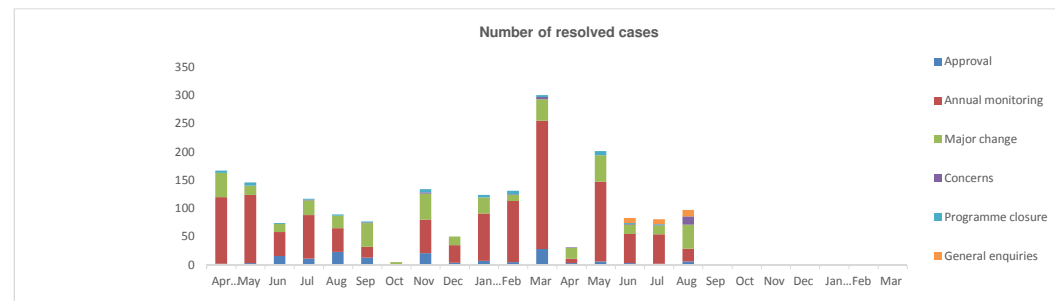
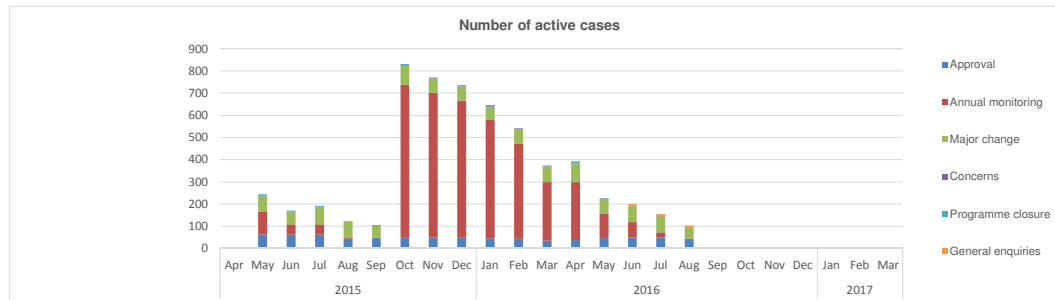
	2015			2016									2017												
	Apr	May	Jun	Jul	Aug	Sep	Oct	Nov	Dec	Jan	Feb	Mar	Apr	May	Jun	Jul	Aug	Sep	Oct	Nov	Dec	Jan	Feb	Mar	
Number of concerns received	0	1	0	0	0	0	1	2	0	0	0	0	0	1	0	1	1								

	2011/12 FYE	2012/13 FYE	2013/14 FYE	2014/15 FYE	2015/16 FYE	2016/17 YTD
Total number of approved progs	644	909	968	967	1,055	1,055
% programmes affected by concerns	0.8%	0.7%	0.5%	0.8%	0.4%	0.3%

Outcome of process	2015			2016									2017												
	Apr	May	Jun	Jul	Aug	Sep	Oct	Nov	Dec	Jan	Feb	Mar	Apr	May	Jun	Jul	Aug	Sep	Oct	Nov	Dec	Jan	Feb	Mar	
Directed visit	0	0	0	0	0	0	0	0	0	0	0	0	0	0	0	0	0								
Approval process	0	1	0	0	0	0	0	0	0	0	0	0	0	0	0	0	0								
Major change process	0	0	0	0	0	0	0	0	0	0	0	0	0	0	0	0	0								
Annual monitoring process	0	0	0	0	0	0	0	0	0	0	0	0	0	0	0	0	0								
Withdrawn	0	0	0	0	0	0	1	0	0	0	0	0	0	1	0	0	0								
Unsubstantiated	0	0	0	0	0	0	0	2	0	0	0	0	0	0	0	0	0								
Pending	0	0	0	0	0	0	0	0	0	0	0	0	0	0	0	1	1								

	2011/12 FYE	2012/13 FYE	2013/14 FYE	2014/15 FYE	2015/16 FYE	2016/17 YTD
Directed visit	0	0	0	1	0	0
Approval process	1	0	1	0	1	0
Major change process	1	0	0	0	0	0
Annual monitoring process	0	0	0	0	0	0
Withdrawn	0	0	0	0	1	1
Unsubstantiated	3	6	4	7	2	0
Pending	0	0	0	0	0	2

Overview of department workload, April 2015 - March 2016



Number of active cases

Operational process	2015												2016												2017												2015/16 FYE	2016/17 YTD
	Apr	May	Jun	Jul	Aug	Sep	Oct	Nov	Dec	Jan	Feb	Mar	Apr	May	Jun	Jul	Aug	Sep	Oct	Nov	Dec	Jan	Feb	Mar	Apr	May	Jun	Jul	Aug	Sep	Oct	Nov	Dec	Jan	Feb	Mar		
Approval	61	62	61	41	45	50	49	47	44	42	34	37	45	48	49	43																				34	43	
Annual monitoring	104	46	47	5	2	687	651	619	534	430	264	261	111	69	22	0																					264	0
Major change	69	55	77	73	53	85	66	62	59	66	69	85	66	73	71	48																					69	48
Concerns	3	3	3	2	1	2	2	2	3	2	2	1	2	1	1	2																					2	2
Programme closure	6	3	3	1	3	7	2	5	5	0	4	8	2	1	1	1																					4	1
General enquiries													8	10	8																					8	8	
<b>Total</b>	<b>243</b>	<b>169</b>	<b>191</b>	<b>122</b>	<b>104</b>	<b>831</b>	<b>770</b>	<b>735</b>	<b>645</b>	<b>540</b>	<b>373</b>	<b>392</b>	<b>226</b>	<b>200</b>	<b>154</b>	<b>102</b>	<b>0</b>	<b>0</b>	<b>0</b>	<b>0</b>	<b>0</b>	<b>0</b>	<b>0</b>	<b>0</b>	<b>0</b>	<b>0</b>	<b>0</b>	<b>0</b>	<b>0</b>	<b>0</b>	<b>0</b>	<b>0</b>	<b>0</b>	<b>0</b>	<b>4,723</b>	<b>102</b>		

Number of resolved cases

Operational process	2015												2016												2017												2015/16 FYE	2016/17 YTD	
	Apr	May	Jun	Jul	Aug	Sep	Oct	Nov	Dec	Jan	Feb	Mar	Apr	May	Jun	Jul	Aug	Sep	Oct	Nov	Dec	Jan	Feb	Mar	Apr	May	Jun	Jul	Aug	Sep	Oct	Nov	Dec	Jan	Feb	Mar			
Approval	2	3	16	11	23	13	0	21	4	7	5	28	3	6	3	2	6																				133	20	
Annual monitoring	118	121	42	77	42	19	0	59	31	84	108	227	8	141	52	52	23																					928	276
Major change	43	16	14	26	22	42	5	46	15	28	11	38	19	47	16	16	42																					306	140
Concerns	0	0	0	1	0	1	0	2	0	0	1	4	1	0	1	1	15																					9	18
Programme closure	4	6	2	2	2	2	0	6	0	5	6	3	0	7	2	1	0																					38	10
General enquiries														9	9	11																					29	8	
<b>Total</b>	<b>167</b>	<b>146</b>	<b>74</b>	<b>117</b>	<b>89</b>	<b>77</b>	<b>5</b>	<b>134</b>	<b>50</b>	<b>124</b>	<b>131</b>	<b>300</b>	<b>31</b>	<b>201</b>	<b>83</b>	<b>81</b>	<b>97</b>	<b>0</b>	<b>0</b>	<b>0</b>	<b>0</b>	<b>0</b>	<b>0</b>	<b>0</b>	<b>0</b>	<b>0</b>	<b>0</b>	<b>0</b>	<b>0</b>	<b>0</b>	<b>0</b>	<b>0</b>	<b>0</b>	<b>0</b>	<b>0</b>	<b>0</b>	<b>1,414</b>	<b>493</b>	

Number of cancelled cases

Operational process	2015												2016												2017												2015/16 FYE	2016/17 YTD	
	Apr	May	Jun	Jul	Aug	Sep	Oct	Nov	Dec	Jan	Feb	Mar	Apr	May	Jun	Jul	Aug	Sep	Oct	Nov	Dec	Jan	Feb	Mar	Apr	May	Jun	Jul	Aug	Sep	Oct	Nov	Dec	Jan	Feb	Mar			
Approval	2	1	1	4	0	3	2	4	2	3	2	4	4	2	2	2	3																					28	13
Annual monitoring	3	2	0	0	0	0	2	1	6	2	2	3	3	1	1	1	0																					18	6
Major change	5	1	4	0	0	3	2	5	0	1	1	3	3	1	4	1	2																					25	11
Concerns	0	0	0	0	1	0	0	0	0	0	0	0	0	0	0	0	0																					1	0
Programme closure	0	0	0	0	1	0	0	0	0	0	0	0	0	0	1	1	0																					1	2
General enquiries														1	1	0																					2	2	
<b>Total</b>	<b>10</b>	<b>4</b>	<b>5</b>	<b>4</b>	<b>1</b>	<b>7</b>	<b>4</b>	<b>11</b>	<b>3</b>	<b>10</b>	<b>5</b>	<b>9</b>	<b>10</b>	<b>4</b>	<b>9</b>	<b>6</b>	<b>5</b>	<b>0</b>	<b>0</b>	<b>0</b>	<b>0</b>	<b>0</b>	<b>0</b>	<b>0</b>	<b>0</b>	<b>0</b>	<b>0</b>	<b>0</b>	<b>0</b>	<b>0</b>	<b>0</b>	<b>0</b>	<b>0</b>	<b>0</b>	<b>0</b>	<b>0</b>	<b>73</b>	<b>34</b>	